





## Your comfort matters!

In our accessories catalog, you will find more than 1,200 items – and every one of them has benefited from WINTERSTEIGER's many years of experience in machinery and workshop accessories.

In addition to ensuring the highest possible quality standards, we always focus on making work a more comfortable experience for you when developing products and extending our product range. This means we prioritize best-in-class ergonomics, lightweight equipment, reducing noise levels and odors, safety, etc.

Our latest products meet these requirements and have become top sellers:

- Baseman: This base repair machine for skis and snowboards has an ergonomic and lightweight design.
- Smogjet: This air filter system for better air during base repair can be retrofitted to any Polyman.
- Dynamic Bridge: With this ultralight carbon binding bridge, you will lift significantly less weight per day than you do with conventional bridges.

Benefit from our experience and choose products that will further your success!





**WINTERSTEIGER SPORTS** is the world market leader, providing complete service for skis and snowboards, storage and rental solutions. Ski and snowboards shops, rental stations, famous ski and snowboard manufacturers and national Ski Federations rely on WINTERSTEIGER's tailor-made system solutions and first-class service. The headquarters located in Austria, subsidiaries in Germany, France, Italy, Switzerland, USA, Canada, China, Russia and more than 20 representations throughout the world ensure a closely-knit sales network and global service. Customer service at WINTERSTEIGER quite simply means being served better and faster!

## INTERNATIONAL REPRESENTATIONS

### ARGENTINA

SCANDINAVIAN OUTDOORS S.A.  
Alejandro Marinac  
Av. Andrés Rolón 1107  
(1642) San Isidro - Pcia. Buenos Aires  
Tel.: +54 11 4707 3000  
Contact: Alejandro Marinac  
E-mail: amarinac@scandinavian.com.ar

### CZECH REPUBLIC

SNOW-HOW CR s.r.o.  
Zdebradska 56  
CZ-251 01 Ricany-Jazlovice  
Tel.: +420 323 6276 03  
GSM: +420 777 869 686  
Contact: Mgr. David Jedlicka  
E-mail: jedlicka@wintersteiger.cz  
www.wintersteiger.cz

### JAPAN

TAT Inc.  
Room No. 104 Residence Monticola,  
J-TOKYO 2-24-17 Katamachi, Fuchu-Shi  
Contact: Yuji Shirako  
Tel.: +81 (42) 340 3320  
Fax: +81 (42) 340 3321  
E-mail: yshirako@tattokyo.com  
www.tattokyo.com

### SLOVAKIA

SNOW-HOW CR s.r.o.  
Zdebradska 56  
CZ-251 01 Ricany-Jazlovice  
Tel.: +420 323 6276 03  
GSM: +420 777 869 686  
Contact: Mgr. David Jedlicka  
E-mail: jedlicka@wintersteiger.cz  
www.wintersteiger.cz

### AUSTRALIA

AUSTRALIA - WINTERSTEIGER  
UBER SPORTS PTY. LTD.  
39 Pitt Square  
Coffs Harbour NSW 2450  
Tel.: +61 4 1868 2145  
Contact: Rohan Smith  
E-mail: ubersportsales@gmail.com

### DENMARK

FUN SPORT  
Sjaellandsgade 10  
DK-7100 Vejle  
Tel.: +45 757 2287 7  
Mobile: +45 2215 2877  
Contact: Henning Mathiasen  
E-mail: info@funsport.dk  
www.funsport.dk

### NEW ZEALAND

GRAVITY SPORTS IMPORTS  
51 School Road  
West Eyreton, RD 5  
NZ-Rangiora, 7475  
Tel.: +64 331 2501 7  
Fax: +64 331 2501 0  
Contact: Geoff McKeown  
E-mail: gravity.sports@xtra.co.nz  
www.gravitysports.co.nz

### SOUTH KOREA

HIMAZONE  
6-19 Gyeongchun-Ro  
227 Beon-Gil  
11926 Gyeonggi-Do  
Tel.: +82 31 566 2336  
Fax: +82 31 566 2320  
Contact: Soonho Kim  
E-mail: kish@kita.net  
www.himazone.co.kr

### BENELUX

KOLTEC SPORT EQUIPMENT B.V.  
Sikkelstraat 6  
NL-3319 LJ Dordrecht  
Tel.: +31 78 61 65 444  
Mobile: +31 653 258 144  
Contact: Niels Kolbe  
E-mail: info@koltecsport.com  
www.koltecsport.com

### FINLAND

OY HUNTTERI AB  
Lukkosepänkatu 4  
FIN-20320 TURKU  
Tel.: +358 505 9720 20  
Contact: Juhani Laakso  
E-mail: juhani.laakso@hunteri.fi  
www.hunteri.com

### NORWAY

BOARD & SKI TEKNIKK A/S  
Sagaveien 66F 3 etg  
N-1555 Son  
Tel.: +47 64 95 95 95  
Contact: Viggo Slang  
E-mail: post@wintersteiger.no  
www.wintersteiger.no

### SPAIN

MANUFACTURAS DEPORTIVAS  
VIPER, S.A.  
C/ de la Mora, 12  
Pol. Ind. Granland-Badalona Sud  
E-08918 Badalona  
Tel.: +34 933 0046 00  
Fax: +34 933 0091 19  
Contact: Luis Fortún  
E-mail: viper@viper-sport.com  
www.viper-sport.com

### BULGARIA

INFOSPORT OOD  
# 22 Zlatan Rog. Str. / Floor 8, Office # 22  
BG-1407 Sofia  
Tel.: +359 296 2631 0  
Fax: +359 296 2632 0  
Contact: Stoyan Atanassov  
E-mail: satanassov@openlinksw.bg  
www.infosport.bg

### FINLAND

WINTTERI OY  
Tontutitie 8A  
FIN-73310 Tahkovouri  
Tel.: +358 400 467889  
Contact: Riku Jaakonsaari  
E-mail: jaakonsaaririku@co.inet.fi

### POLAND

IKATUR A. MALYSA SPÓLKA JAWNA  
ul. Zary 20  
PL-32-031 Mogilany  
Tel.: +48 12 444 50 60  
Fax: +48 12 444 50 61  
Contact: Andrzej Malysa  
E-mail: malysa@ikatur.pl  
www.wintersteiger.pl

### SWEDEN

BOARD & SKI TEKNIKK A/S  
Sagaveien 66F 3 etg  
N-1555 Son  
Tel.: +47 64 95 95 95  
Contact: Viggo Slang  
E-mail: post@wintersteiger.no  
www.wintersteiger.no

### CHILE

EOLIA LTDA  
Av. Las Condes 8606  
RCH-Santiago  
Tel.: +56 999 175 567  
Fax: +56 222 114 379  
Contact: Michel Bohuon  
E-mail: nautisport@nautisport.cl  
www.nautisport.cl

### GREAT BRITAIN

ANYTHING TECHNICAL LIMITED  
Sand Aire House, New Road Kendal,  
Cumbria LA9 4AY  
Tel.: +44 1539 734701  
Contact: Peter Evans  
E-mail: info@skiequipmentuk.com  
www.wintersteiger.co.uk

### ROMANIA

SPORTSGAMES srl  
Str. Ovidiu Balea nr 57  
RO-300620 Timisoara  
+40 256 431 511  
+40 256 491 301  
Contact: Daniel Dobos  
E-mail: fischer@sportsgames.ro  
www.sportsgames.ro

### TURKEY

ESKAPI KAR SPORLARI TIC.LTD.STI.  
Atatürk cad. Pitrak sok 16/A A.Hisari  
34813 Istanbul, Turkey  
Contact: Hakan Sevrge  
+90 216 4657755  
+90 216 4657590  
E-mail: hsevrge@proshoptr.com  
www.proshoptr.com

### CHINA

Melchers (Beijing) Ltd.  
Beijing Tower Room 503-504,  
No. 10, Chang An Avenue (East)  
Beijing - 100006 / P.R. China  
Tel.: +86 10 6525 7775  
Fax: +86 10 6512 3505  
+86 10 6524 0444  
Contact: Alice Suzhen Sun  
E-Mail: alicesun@bj.melchers.com.cn  
www.melchers-snow.cn

### HUNGARY

SZALONTAI Rendszerintegrátor Kft  
Bajcsy-Zs. u. 74.  
HU-8230 Balatonfüred  
Contact: Gábor Mohos  
Tel: +36 70 7033 890  
E-mail: mohos.gabor@szalontai.co.hu  
www.szalontai.co.hu

### SLOVENIA, CROATIA, BOSNIA

HERZEGOVINA, MACEDONIA,  
SERBIA and MONTENEGRO  
VITA, MARKETING, TRGOVINA  
IN SPORT, TREBNJE, D.O.O.  
Studenec 24  
SLO-8210 Trebnje  
Tel.: +386 73466325  
Fax: +386 73045750  
Contact: Peter Kovacic  
E-mail: peter.kovacic@vita.si  
www.vita.si



# Contents

<b>1</b>	<b>WINTERSTEIGER TUNING TOOLS</b>	<b>6</b>
	The WINTERSTEIGER retail program	6
<b>2</b>	<b>WORKSHOP ACCESSORIES</b>	<b>13</b>
	Work Benches and Accessories	13
	Binding, Mounting and Repair	18
	Base Repair	27
	Edge Care	33
	Waxing Machines and Accessories	41
	Waxing Material and Accessories	45
	Pole accessories	50
	General Workshop Accessories	51
<b>3</b>	<b>BOOT FITTING / BOOT DISINFECTION</b>	<b>52</b>
	Ultracam, Rivets, Shaft Grinder	54
	Boot Disinfection and Deodorisation	58
<b>4</b>	<b>MACHINERY</b>	<b>62</b>
	Base Repair Machine Baseman	70
	Smogjet Air Filter System	70
<b>5</b>	<b>MACHINE ACCESSORIES</b>	<b>71</b>
	Compressors	71
	Hand Fork Lift Truck	72
	Accessories for Base Repair Machines	73
	Grinding Belts	75
	Grinding Stones	79
	Diamond Dressers	83
	Racing Accessories	85
	Grinding Stones Racing	86
	Alpine Diamond Dressers f.RaceNC/ OmegaRS/ SigmaRS	88
	Nordic Diamond Dressers f.RaceNC/ OmegaRS/ SigmaRS	88
	WINTERSTEIGER special: The Ceramic Disc Finish	90
	Binding Bridges	93
	Health Care	98
	Wearing Parts	98
	Fluidmanagement	103
	Filter Accessories	110
	Accessories for Waxing Machines	112
	Accessories for Binding Adjusting Machines	116
<b>6</b>	<b>SKATE GRINDING MACHINES AND ACCESSORIES</b>	<b>119</b>
	PROSHARP AS1001	119
	PROSHARP SKATEPAL Pro 3	121
	SSM-2/H 10	122
<b>7</b>	<b>ACCESSORIES FOR EASYRENT RENTAL SOFTWARE</b>	<b>123</b>
	For Zebra Label Printers	123
	For Bon Printers	123
	Various Accessories for Easyrent	124
	Barcode Labels	124
<b>8</b>	<b>RENTAL, STORAGE AND DRYING SYSTEMS</b>	<b>126</b>
<b>9</b>	<b>PROMOTIONAL MATERIAL</b>	<b>132</b>
	Clothing	132
	Various Promotional Material	132
<b>10</b>	<b>PRODUCT INDEX</b>	<b>134</b>
<b>11</b>	<b>ORDER FORMS</b>	<b>136</b>

# WINTERSTEIGER TUNING TOOLS

## The WINTERSTEIGER retail program

1



### The WINTERSTEIGER retail program

The WINTERSTEIGER retail program features tools and information for the consumer to maintain their equipment between shop visits. The more the consumer is educated about properly tuned equipment, the more shop visits they will make during the season. WINTERSTEIGER Ski and Snowboard Tuning Tools are the perfect solution for the do-it-yourselfer who wants to keep their skis and snowboards in top notch condition between visits to your WINTERSTEIGER repair shop. Not only are we offering the highest quality tools, we also offer displays and packaging that tie the product line back to your repair shop. Our complete line of hand tools allow your customers to wax, repair minor base damage and keep their edges sharp and smooth. Detailed product use and consumer information about the need for tuning is available online at our consumer based web site [www.tuneyourskisandboards.com](http://www.tuneyourskisandboards.com). All retail products have EAN-codes on the packaging.



#### Ski Vise SPORT PLUS

Sturdy, high-tensile aluminium vise for tuning all types and shapes of skis. The Vise SPORT PLUS is a very easy to use for tuning all types and shapes of skis. Features sturdy high tensile aluminum and is light and easy to transport. The holding system keeps the ski secure for base and side edge work. Includes 2 brake retainers (packaged for retail). This vise allows also a 60° positioning of the skis for fast and simple edge tuning.

57-401-014      Ski Vise      pcs.



#### Ski Vise PRO -Wide Opening-

For use when maximum holding power is needed. The Ski Vise Pro Wide Opening has jaws with 90 mm of holding surface and is built to withstand heavy use. The holding frame includes shellless jaws that will hold any shape sidewall and can accommodate riser plates. The adjustable guide blocks include the locking spindle. This feature allows the ski to be held sideways for edge and sidewall work without interference from the holding vise. This vise allows a positioning of 60° when tuning the side edge for faster and simpler tuning.

57-401-225      pcs.



#### Ski Vise RACING

Heavy duty, high-tensile aluminium vise for tuning skis. The Ski Vise RACING has jaws with 70 mm of holding surface and is built to withstand heavy use. The holding frame includes shellless jaws that will hold any shape sidewall and can accommodate riser plates. The adjustable guide blocks includes the locking spindle. This vise allows a positioning of 60° when tuning the side edge for faster and simpler tuning.

57-401-020      pcs.





### Snowboard/Freeride Stopper

Sturdy universal vise for tuning snowboards and wide skis. This vise comes with a high-impact plastic body and a special rubber grip top that holds the snowboard extremely well for flat filing and waxing. For two side edge positions: standard 90° and easy 60°. Suitable for all kinds and shapes of skis and snowboards. Binding clearance: 160 mm.

57-401-025 pcs.



### Brake Retainer green

To fix the ski brakes in upper position. A universal ski brake retainer with more flex that works with all bindings. This specially formulated rubber compound is tough, long lasting with 100 % elongation. (packaged for retail).

57-440-003 4 pcs. pk.



### Flatness Tester 150 mm

L = 15 cm x Ø 1,27 cm diameter tru bar. Heat treated and black oxide treated. Place the tru bar on the base in the tip, under the binding, and on the tail to check for flatness, by looking for light under the tru bar in the middle or by the edges (packaged for retail).

57-203-201 150 mm pcs.



### Sidewall Planer ERGO RAZOR

To remove sidewall material. The ERGO RAZOR sidewall planer is essential to prep for side edge filing as it is common for a file to be compromised by cutting into the sidewall of a ski. It is very important to remove the sidewall material to avoid loading files with plastic and to keep the sidewall from interfering with the bevel on the edge. The razor has an ergonomic design that fits into the palm of the hand. It is adjustable and can be used with both the right and left hands. It comes with a round cutting blade (packaged for retail).

57-401-100 pcs.



**NEW**

### Discman 4 with original Makita Li-ion battery (1.500 mAh)

The mobile grinding tool for side-edge angles between 85° and 90° at skis & snowboards. Including grinding disc, tools for changing the disc, chargeable battery and battery charger. By using a ceramic disc, this grinder enables fast and exact re-sharpening of the side edge in steps of 0.5°. For base edge tuning between 0.5° and 2° the optional base edge tuning attachment is needed.

- With MAKITA lithium-ion battery 1.500 mAh and MAKITA battery charger.
- With a very short charging time of the Li-Ion battery: only approx. 20 minutes.
- The lightweight lithium-ion battery enables a weight reduction of 400 grams at the Discman 4 with battery.
- Including a dust magnet for collecting the metal dust during grinding.
- NEW: In addition each Discman 4 is equipped with a new grinding support. This enables a larger contact surface at the base when grinding the side edge and facilitates the handling of the device at the ski.

55-100-670 With battery+charger 230V/50Hz pcs.







### File Guide PRO SHARP Race

This updated professional side edge sharpener gives very accurate bevels from 90 to 85 degrees. A large knob allows adjustment to one of the 6 possible positions without the need of a screwdriver. Innovative arrow pattern allows waste material to fall free of the base without damage and reduces friction. Accepts file, stones, and diamond stones up to 6 mm thick and comes with a 80 mm ICECUT file (packaged for retail).

57-401-030      85° – 90°      pcs.



### File Brush/Card

To clean debris from the teeth of files. Proper cleaning helps to prolong the life of a file and ensures better overall tuning results (packaged for retail).

57-200-050      pcs.



### Pocket Stone

For quickly removing minor burrs and imperfections on edges. Use the pocket stone mounted in the file guide to remove any striations left by the file to further polish the edge (packaged for retail).

57-200-102      pcs.



### Soft Red Gummi Stone 40 x 20 x 65 mm

For fine buffing and polishing on the edge. Starting at the tip of the ski/board, the gummi stone should be run at a 45 degree angle for up to 10 to 20 cm past the contact point. Making multiple passes, reducing the length of the stroke each time, feather the edge from the tip to the set bevels. Run the gummi stone from tip to tail to deburr and repeat the detune process in the tail (packaged for retail).

57-420-242      very fine, 40 x 20 x 65 mm      pcs.



### Finn File "Mill Bastard" 150mm

These are not the low quality files traditionally associated with retail sales. Guaranteed for their quality and straightness, these are the best files you will find for the money. (packaged for retail)

55-500-135      Hard Chrome File 150 mm      pcs.



### File Guide RACING SHARP

Ergonomic design side and base edge sharpener is easy to use and allows your customers to maintain their edges between visits to your repair facility. Allows for 89° to 86° side edge bevel and 0.5° and 1° base edge bevel. (packaged for retail)

#### Racing Sharp File Guide

57-401-145      + Finn File 80 mm      pcs.

#### Racing Sharp Kit

57-401-146      +Zircon-,Finn-, Diamond File      pcs.

#### Spare Files

57-401-173      Spare Zirconium File      pcs.

57-401-174      Spare File 80 mm      pcs.

55-500-108      Spare Diamond File      pcs.

# WINTERSTEIGER TUNING TOOLS

## The WINTERSTEIGER retail program

1



### Quick Sharp File Guide

Side edge sharpener for 89 - 88 degrees. The plastic molded tools are easy to use and carry on the hill. Packaged for retail.

#### Quick Sharp Extra File Guide

57-401-163 + Zircon, Finn, Diamond File pcs.

#### Quick Sharp File Guide

57-401-161 + Finn File 40 mm pcs.

#### Spare Files Quick Sharp

57-401-173 Spare Zirconium File pcs.

55-500-106 Spare Finn File 40mm pcs.

55-500-108 Spare Diamond File pcs.



### ICECUT Professional File

Used by World Cup technicians because of the precision cut teeth and comfortable tangless design. ICECUT files are also the straightest file available for accurate beveling and have one of the highest Rockwell hardness for extended life. (packaged for retail)

55-500-046 150 mm pcs.

55-500-047 200 mm pcs.



### Diamond File Sport

The latest in diamond stone technology, this is the best diamond stone we have ever used. The rigid composite body resist flex during use. The unique diamond design with ultra high quality diamonds means a long life. Best used with water. Comes in two lengths 70 and 100 mm. (packaged for retail)

57-401-210 Grit 600, fine, 70 mm pcs.

57-401-211 Grit 400, medium, 70 mm pcs.

57-401-212 Grit 200, coarse, 70 mm pcs.

57-401-220 Grit 600, fine, 100 mm pcs.

57-401-221 Grit 400, medium, 100 mm pcs.

57-401-222 Grit 200, coarse, 100 mm pcs.



### Drip Candles

Drip candles provide base repair material for repairing scratches and damage to the base on skis and snowboards. (packaged for retail)

57-440-001 Black, 3 pcs. pk.

57-440-002 Clear, 3 pcs. pk.



### Metal Scraper

To remove excess repair material from the base. After the repair material has cooled completely, use the metal scraper to remove the excess material and blend the repair into the base. (packaged for retail)

55-240-457 130 x 60 x 0,7 mm pcs.





### Wax Iron WINTERSTEIGER 220 - 240 V / 50 Hz, 800W

High quality wax iron for skis and snowboards. Fine tuned thermostat reduces temperature fluctuations and a thick metal base holds heat to prevent damage during waxing. (packaged for retail)

57-100-290	220-240V/ 50 Hz, 800 W	pcs.
57-100-291	220-240V/ 50 Hz,w.Swiss plug	pcs.



### Wax Iron WINTERSTEIGER Digital, 230 V/ 50 Hz, 1000 W

Precise temperature settings with digital control combine with a highly accurate thermostat to ensure a correct, constant temperature. Adjustable from 80° to 180°C. The 15 mm thick heating plate with innovative dimpled surface which allows the wax iron to easily move across the base by reducing suction. The beveled edges let melted wax flow over the entire base evenly for consistent results.

57-100-310	230 V/ 50 Hz, 1000 W	pcs.
------------	----------------------	------



### Base Cleaner/Wax Remover 0,5 lt.

For removing grease, adhesives and for cleaning.

57-202-603	0,5 lt.	pcs.
------------	---------	------



### Liquid Easy Wax 50 ml

Liquid Wax for easy and fast application. You and your customers will love this easy to use liquid wax from WINTERSTEIGER. Application is as easy as rub-on, buff off, GO! 50 ml bottle with built-in sponge applicator. Environmentally friendly formula uses no harsh chemicals to harm the mountains we all love (packaged for retail).

57-440-109	50 ml, with sponge applicator	pcs.
------------	-------------------------------	------



### Easy Wax

Paraffin based rub-on wax that is suitable for a wide range of snow types and temperatures. Includes 57 g of wax and buffing pad (packaged for retail).

57-440-105	57 g box with buffing pad	pcs.
------------	---------------------------	------



### Wintersteiger Slik Wax

Wintersteiger Slik Waxes have a lower coefficient of friction and a larger temperature range than most other waxes. (packaged for retail)

57-440-100	85 g, green, -15 to -5°C	pcs.
57-440-101	85 g, blue, -12 to -8°C	pcs.
57-440-102	85 g, red, -5°C and up	pcs.
57-440-103	85 g, yellow, +4°C and up	pcs.
57-440-104	85 g, green, universal	pcs.
57-440-108	85 g, graphite, universal	pcs.

# WINTERSTEIGER TUNING TOOLS

## The WINTERSTEIGER retail program

1



### Plexi Scraper Alpine 130 x 60 x 3 mm

To remove cooled wax from the base. After the wax has cooled to room temperature, any excess must be scraped off and the structure must be brushed. Always allow the wax and the ski or snowboard to cool to room temperature before scraping, otherwise the warm wax will be pulled from the pores, leaving the base dry.

55-200-013      130 x 60 x 3 mm      pcs.



### Plexi Scraper Snowboard 320 x 70 x 5 mm

55-200-015      320 x 70 x 5 mm      pcs.



### Scrapper Sharpener PLEXI SHARP

Designed to meet the needs of race service personal and service techs alike. The tall sides hold the plastic scraper in the perfect upright position while the large base provide a stable platform to hold the tool. The plastic is removed by a replaceable 100 mm panzer file and requires no adjustment to the blade.

57-203-430      Scrapper Sharpener      pcs.



### Wax Buffing Pad (Scotchbrite) 220 x 150 mm

Pad to remove excess wax and buffing in of Rub On Waxes. Scotch Brite nylon wax buffing pads are a great tool for removing excess wax from the base and sidewalls of skis and snowboards. Used with light pressure after the wax has been scraped off the base, helps to expose the structure.

57-440-010      220 x 150 mm      pcs.



### Wax Brush Bronze 120 x 70 mm

This stiff, all-bronze base brush is perfect for cleaning out wax in a coarse structure on the base before applying hot wax. Comes with a hang tag and sticker, packaged for retail.

55-500-077      120 x 70 mm      pcs.

### Wax Brush Nylon 120 x 70 mm

General purpose stiff nylon bristle brush. Perfect for wax texturing. Comes with a hang tag and sticker, packaged for retail.

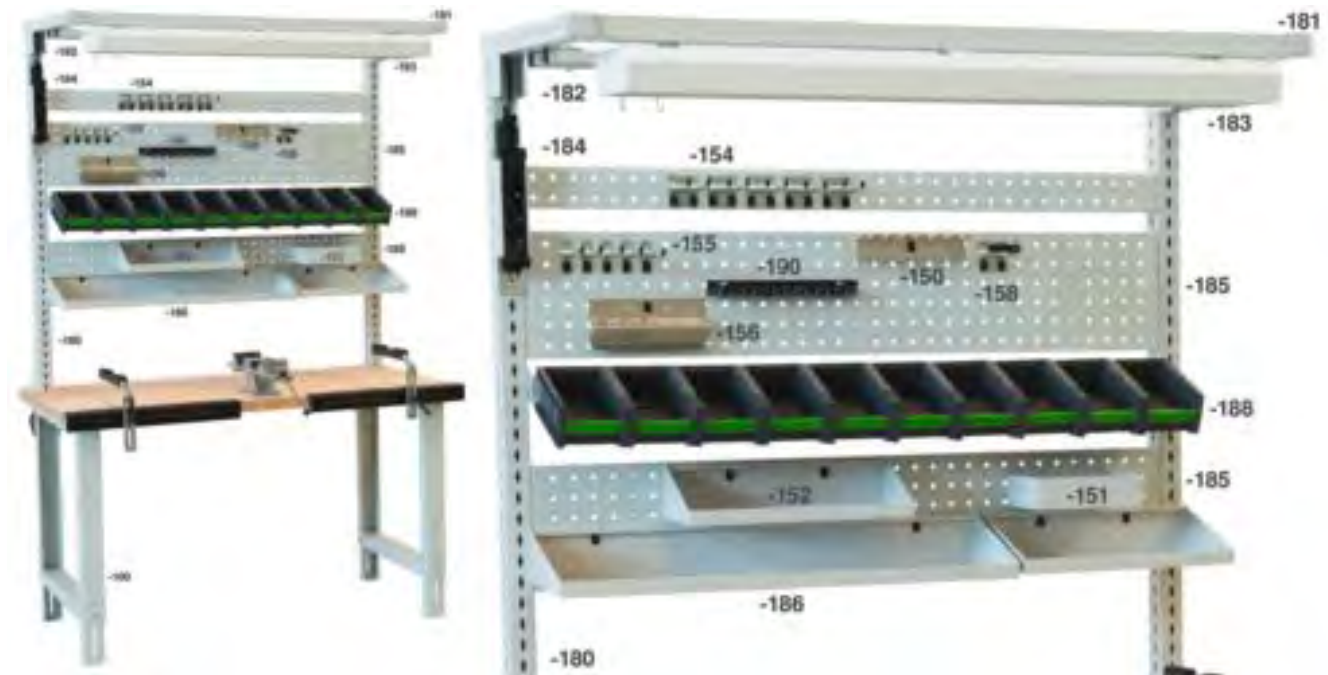
55-500-016      120 x 70 mm      pcs.

### Wax Brush Horsehair 120 x 70 mm

This is a high quality brush used for cross-country, alpine and snowboard tuning. An essential tool for the serious tuner to expose the base texture. Comes with a hang tag and sticker, packaged for retail.

55-500-078      120 x 70 mm      pcs.

Work Benches and Accessories



2

**Multi Functional Work Bench**

Art.No.	Designation	Description	Techn. Data	Unit
55-125-100	Work Bench Frame 1500 x 750mm incl. wooden worktop	Adjustable height (80 - 95 cm), incl. beechwood plate	Worktop 1500 x 750 x 40 mm	pcs.
55-125-180	WB-Upper Frame	For fixing of top frame and perforated plates.	L = 1.357 mm	pcs.
55-125-181	WB-Top Frame without Guide Rail, L = 645 mm		L = 645 mm	pcs.
55-125-182	WB-Optional Guide Rail 1.350 mm	Including 1 pc. idler roller and 1 pair of stopper.	L = 1.350 mm	pcs.
55-125-183	WB-Lighting System 1350mm	Incl. 2 flourescent lamps.	2 x 36 W	pcs.
55-125-184	WB-Power Supply incl. 3 Sockets	Incl. 3 sockets, on-off switch and fixing clamps.	with supply cable 230 V, 3 m	pcs.
55-125-185	WB-Perforated Plate 1350 x 240mm		L = 1.350 mm	pcs.
55-125-186	WB-Metal Shelves	Set with 2 shelves for attachment to the perforated plates.	900 x 250 mm, 450 x 250 mm	pk.
55-125-156	WB-Drill Holder for 13 units		L = 225 mm	pcs.
55-125-154	WB-Tool Holder (5 pcs.) with double hook	Box with 5 pcs.	L = 100 mm	pk.
55-125-155	WB-Tool Holder (5 pcs.) with single hook	Box with 5 pcs.	L = 100 mm	pk.
55-125-158	WB-Flexible Tool Holder	Clamp support for universal use.		pcs.
55-125-150	WB-Tool Holder, L = 190 mm	For 6 screw drivers.	L = 190 mm	pcs.
55-125-190	WB-Tool Holder, L = 300 mm, 3 pcs.	For 13 tools, set of 3 pcs.	L = 300 mm, 3 pcs.	pk.



# WORKSHOP ACCESSORIES

## Work Benches and Accessories

2

### Multi Functional Work Bench

Art.No.	Designation	Description	Techn. Data	Unit
55-125-151	WB-Tray 225 x 175 x 65 mm		225 x 175 x 65 mm	pcs.
55-125-152	WB-Tray 450 x 170 mm		450 x 170 mm	pcs.
55-125-188	WB-Retaining Rail 1350 mm	Set with 1 support rail (L = 1.398 mm) and 10 boxes 130 x 198 x 90 mm (W x D x H)	1.298 x 265 x 90 mm	pcs.



#### WB-Drawer Cabinet 525 x 525 x 400 mm

Optional drawer cabinet for attachment to the underside of the worktop. With 2 lockable full-extension drawers.

55-125-187	525 x 525 x 400 mm (LxWxH)	pcs.
------------	----------------------------	------



#### Balancer with metal case, 1 - 2 kg

With metal housing, easy adjustable.

55-100-250	1 - 2 kg	pcs.
------------	----------	------



#### Balancer with plastic case, 1 - 2 kg

Competitive priced balancer with plastic housing, easily adjustable.

55-100-248	1 - 2 kg	pcs.
------------	----------	------



#### WB-Magnetic Tool Holder 350 mm

55-100-180	W = 350 mm	pcs.
------------	------------	------



**Moveable Drawer Cabinet 65 x 71 x 79 cm**

With 2 drawers (each 150 mm high) and 2 shelves, incl. rubber mat.

55-125-170      65 x 71 x 79 cm (L x W x H)      pcs.



**Clean-Up Paper Roll, 265 mm wide**

77-600-150      1,000 pcs. sheets      pcs.

**Paper-Roll Holder**

Without paper.

7019-01111-V2      pcs.

**Wall Mounted Paper-Roll Holder**

Without paper.

7019-01111-V1      pcs.



**TORK Premium Cleaning Cloth**

Nonwoven cleaning cloth for versatile and flexible use, with high suction power and tensile strength, very well suited for applications with oil, grease and grinding emulsion.

56-300-020      355 x 430 mm, 120 pcs.      pk.

**TORK Dispenser for Wall Mounting**

For 1 bag = 140 pcs. premium cleaning cloths.

56-300-025      413 x 220 x 200 mm(LxWxH)      pcs.



**Hand Cleaning Wipes**

Useable without water.

56-300-010      36 pcs.      pk.



**Rubber Mat**

For the backshop floor, helps to prevent accidents.

56-300-100      800 x 600 mm, Closed      pcs.

# WORKSHOP ACCESSORIES

## Work Benches and Accessories



### Service/ Tuning Bench

Vise sold separately, adjustable height, fully galvanized, stable construction, collapsable.

55-100-601	Service Bench 120 x 50 x 80cm	pcs.
55-100-602	Optional Upper Frame	pcs.

2



### Snowboard/Freeride Stopper

Sturdy universal vise for tuning snowboards and wide skis. This vise comes with a high-impact plastic body and a special rubber grip top that holds the snowboard extremely well for flat filing and waxing. For two side edge positions: standard 90° and easy 60°. Suitable for all kinds and shapes of skis and snowboards. Binding clearance: 160 mm.

57-401-025		pcs.
------------	--	------



### Ski Vise BACKSHOP

Great shop vise for alpine and cross country skis as well as snowboards. The vise bolts to the work surface making it more secure for working on the base or mounting bindings. The supports include a vise to hold both skis and boards tightly while working on side edges. Max. jaw opening for skis 70 mm, snowboards 270 mm.

55-500-057		pcs.
------------	--	------



### Ski Vise SPORT PLUS

Sturdy, high-tensile aluminium vise for tuning all types and shapes of skis. The Vise SPORT PLUS is a very easy to use for tuning all types and shapes of skis. Features sturdy high tensile aluminum and is light and easy to transport. The holding system keeps the ski secure for base and side edge work. Includes 2 brake retainers (packaged for retail). This vise allows also a 60° positioning of the skis for fast and simple edge tuning.

57-401-014	Ski Vise	pcs.
------------	----------	------





**Ski Vise PRO -Wide Opening-**

For use when maximum holding power is needed. The Ski Vise Pro Wide Opening has jaws with 90 mm of holding surface and is built to withstand heavy use. The holding frame includes shellless jaws that will hold any shape sidewall and can accommodate riser plates. The adjustable guide blocks include the locking spindle. This feature allows the ski to be held sideways for edge and sidewall work without interference from the holding vise. This vise allows a positioning of 60° when tuning the side edge for faster and simpler tuning.

57-401-225

pcs.



**Ski Vise RACING**

Heavy duty, high-tensile aluminium vise for tuning skis. The Ski Vise RACING has jaws with 70 mm of holding surface and is built to withstand heavy use. The holding frame includes shellless jaws that will hold any shape sidewall and can accommodate riser plates. The adjustable guide blocks includes the locking spindle. This vise allows a positioning of 60° when tuning the side edge for faster and simpler tuning.

57-401-020

pcs.



**Cross Country Support**

The Cross-Country Support attaches to the adjustable guide block of the ski vise RACING/ PRO. It gives more support to cross country skis during tuning.

55-500-054

pair



**DSP Double Ski Vice**

For mounting and repair of skis (up to 150 mm) and snowboards (up to 400 mm). Includes 2 pcs. SNB adaptors.

7050-02-00

Vise only

pcs.

**VA Adjustable Rests**

One pair 250 mm wide rests with bars for working on side edges.

7070-02-00

W = 250 mm

pair

**Spare Clamp Lever black M10 x 40**

M10 x 40, black, for adjustable rests. Handle used to secure adjustable rest (male end).

43-100-460

pcs.

## WORKSHOP ACCESSORIES

### Binding, Mounting and Repair

2



#### Spare Sliding Clamp Bolt

For adjustable rests. Screw plate that the handle threads into (female end).

7070-0111-003

pcs.

#### SSPV Mounting Vice

The fastest vise for mounting bindings. Designed for wider skis up to 190 mm wide in tip and tail section, improved edge protection. Each ski rest measures 1300 mm long x 50 mm wide.

7080-402

Complete Vise

pcs.

### Binding, Mounting and Repair



#### FEIN Electronic Drill 230 V / 50 Hz, 500 W

Electronic controlled drilling machine with continuously variable rotation speed, single sheat drill chuck 10 mm and clockwise rotation; including spiral cable and hanger.

55-100-300

230 V / 500 W, 1,7 kg

pcs.



#### FEIN Expanding Spiral Cable

15-209-100

pcs.



NEW

#### FEIN Cordless Drill /Screw Driver ASCM 12 V

With spindle lock 1,5 - 13 mm; with brushless FEIN PowerDrive motor, solid metal interchangeable drill chuck, drill chuck with spindle lock and chucking power safeguard, compact 150 mm length (without drill chuck) and bright LED light on the housing. The battery capacity can be read directly on the battery. With hanger and hard shell case, without battery.

55-100-395

1,4 kg, 400/2500 rpm.

pcs.



NEW

#### FEIN Battery Starter Kit 12 V

With 2 pcs. FEIN Li-Ion Batteries 12 V/2,5 Ah no. 92604168020 + 1 pc. FEIN Charger ALG 50, 220V no. 92604129010.

55-100-396

2pcs.Batteries 12V+Charger220V

pcs.



NEW

**FEIN Li-Ion Battery 12 V, no. 92604168020, 2,5 Ah**

For FEIN Cordless Drill /Screw Driver ASCM 12 V.

55-100-397      Li-Ion Battery 12 V      pcs.



NEW

**FEIN Bit Holder for Cordless Drill/ Screw Driver ASCM 12V**

FEIN 1/2in hexagon socket bit holder with onehanded operation and powerful neodymium magnet.

55-100-398      Bit Holder hexagonal      pcs.



**FEIN Spare battery 14,4 V**

For FEIN Cordless Drill/Screwdriver ABS14C (before 2017).

55-100-384      Spare Battery 14,4 V      pcs.



**SNB Multi Inserts**

With polymaterial layer, 50 pcs. each.

55-200-025	7 mm, mixed colours, 50 pcs.	pk.
55-200-035	7 mm, clear, 50 pcs.	pk.
55-200-036	7 mm, black, 50 pcs.	pk.
55-200-026	9 mm, mixed colours, 50 pcs.	pk.
55-200-037	9 mm, clear, 50 pcs.	pk.
55-200-038	9 mm, black, 50 pcs.	pk.



**Snowboard Multi-Set**

This set includes: 1 pc. snowboard drill 110°, 1 pc. gauge drill, 10 pcs. multi inserts 7 mm, 10 pcs. multi inserts 9 mm, 5 pcs. countersink screws M6 x 16, 5 pcs. countersink screws M6 x 20, 5 pcs. roundhead screws M6 x 16, 5 pcs. roundhead screws M6 x 20, 10 pcs. brass inserts to strike, 10 pcs. alpine / XC-screws M5.5 x 13 mm

55-200-019      62 pcs.      pcs.



**Snowboard countersink Drill 110°**

Works perfect with snowboard multi inserts. Use 8 mm gauge drill.

55-200-020      pcs.



# WORKSHOP ACCESSORIES

## Binding, Mounting and Repair



### Hollow Drill Bit L = 75 mm, Ø = 8 mm

Removes broken screws and surrounding material. Leaves a clean hole, ready to accept plastic or brass inserts.

55-530-403 L = 75 mm, Ø = 8 mm pcs.



### Gauge Drill Ø = 8 mm

For brass or plastic inserts, adjustable depth.

55-100-351 Ø = 8 mm pcs.



### Threading die for M6 screws

Used for ski binding screws at hard ski surfaces.

55-100-349 4.1 mm pcs.



### Binding Spray 300 ml

55-530-300 300 ml pcs.



### Binding Drill Set 10 pcs.

High quality step drills for alpine and nordic bindings. To be used with mounting jigs. Set with 10 binding drills: 2 pcs. 3.5 x 7 mm, 1 pc. 3.5 x 9 mm, 1 pc. 3.5 x 15 mm, 1 pc. 3.6 x 9 mm, 1 pc. 3.6 x 14.5 mm, 1 pc. 4.1 x 7 mm, 2 pcs. 4.1 x 9 mm, 1 pc. 4.1 x 11 mm.

55-100-337 pcs.



### Binding Drill

#### Binding Drill f. child skis

55-100-315	3,5 x 7 mm	pcs.
55-100-316	3,5 x 9 mm	pcs.
55-100-322	3,5 x 9,5 mm	pcs.

#### Binding Drill f. XC skis

55-100-314	3,6 x 14,5 mm	pcs.
55-100-315	3,5 x 7 mm	pcs.
55-100-317	3,5 x 15 mm	pcs.
55-100-318	3,8 x 15 mm	pcs.

#### Binding Drill f. alpine skis / carver

55-100-313	3,6 x 6,5 mm	pcs.
55-100-310	3,6 x 9 mm	pcs.
55-100-325	3,6 x 9,5 mm	pcs.
55-100-311	3,6 x 7 mm	pcs.
55-100-312	3,6 x 7,5 mm	pcs.
55-100-319	3,8 x 9 mm	pcs.
55-100-323	3,8 x 11 mm	pcs.
55-100-321	4,0 x 7 mm	pcs.
55-100-324	4,0 x 9 mm	pcs.
55-100-320	4,1 x 7 mm	pcs.
55-100-328	4,1 x 7,5 mm	pcs.
55-100-330	4,1 x 9 mm	pcs.
55-100-329	4,1 x 9,5 mm	pcs.
55-100-339	4,1 x 11 mm	pcs.
55-100-332	4,2 x 11 mm	pcs.

#### Binding Drill f. binding plates

55-100-333	4,6 x 10 mm	pcs.
55-100-334	4,6 x 11,5 mm	pcs.

#### Binding Drill with special coating

55-100-338	4,1 x 9 mm	pcs.
55-100-335	4,6 x 11,5 mm	pcs.

#### Multi Gauge Drill

55-100-336	3,3/4,1 x 11 mm	pcs.
------------	-----------------	------



### Bit Holder

55-100-405	with non-slip grip	pcs.
------------	--------------------	------



### Bit Holder FEIN 7mm

For the magnetization of 25 mm long bits.

55-100-410	For FEIN machines	pcs.
------------	-------------------	------



### Bit Holder hexagonal

For the magnetization of 25 mm long bits.

55-100-409	hexagonal	pcs.
------------	-----------	------

# WORKSHOP ACCESSORIES

## Binding, Mounting and Repair

2



### Screwdriver Bits 25mm

55-100-430	Bit Pozidrive 25 mm, size 2	pcs.
55-100-440	Bit Pozidrive 25 mm, size 3	pcs.
55-100-450	Bit Philips 25 mm, size 3	pcs.
55-100-460	Bit Torx 25 mm, size 25	pcs.
55-100-461	Bit Torx 25 mm, size 20	pcs.
55-100-425	Bit straight slot, 50mm, large	pcs.



### Screwdriver Bits FEIN

55-100-470	Bit Pozidrive 100 mm, size 2	pcs.
55-100-475	Bit Pozidrive 120 mm, size 2	pcs.
55-100-480	Bit Pozidrive 100 mm, size 3	pcs.
55-100-485	Bit Pozidrive 120 mm, size 3	pcs.
55-100-486	Bit Pozidrive 150 mm, size 3	pcs.
55-100-487	Bit Torx 20, 100 mm	pcs.
55-100-488	Bit Torx 25, 120 mm	pcs.



### Screwdriver Bits hexagonal

55-100-490	Bit Pozidrive 100 mm, size 2	pcs.
55-100-495	Bit Pozidrive 120 mm, size 3	pcs.
55-100-496	Bit Torx 20, 100 mm	pcs.
55-100-497	Bit Torx 25, 120 mm	pcs.



### Screwdriver Pozidrive

With non-slip grip and hexagonal bolster for a wrench attachment.

55-500-006	Pozidrive size 2	pcs.
55-500-007	Pozidrive size 3	pcs.



### Screwdriver Philips

With non-slip grip and hexagonal bolster for a wrench attachment.

55-500-080	Philips size 2	pcs.
55-500-081	Philips size 3	pcs.





**Screwdriver Torx**

With non-slip grip and hexagonal bolster for a wrench attachment.

55-500-082	Torx 20	pcs.
55-500-083	Torx 25	pcs.



**Screwdriver Set, straight slot 3 pcs.**

With hexagonal bolster for a wrench attachment.

55-500-005	3 pcs.	pcs.
------------	--------	------



**Plastic Inserts**

Used for 8 mm holes. Pullout resistance: 240 kp.

55-530-416	100 pcs.	pk.
------------	----------	-----



**Brass Inserts**

Used for 8 mm holes. Pullout resistance: 300 kp.

55-530-405	100 pcs.	pk.
------------	----------	-----



**Brass Inserts to be screwed in**

Boxes with 100 pcs. each., Ø = 8 mm, for reparings of broken screws.

55-530-406	L = 8 mm	pk.
55-530-407	L = 9 mm	pk.
55-530-411	L = 9 mm, for binding plates	pk.
55-530-408	L = 11 mm	pk.



**Screw Driver with wrench for Brass Inserts**

This tool is used to install any of the Screw-in Inserts.

55-530-409		pcs.
------------	--	------

# WORKSHOP ACCESSORIES

## Binding, Mounting and Repair



### Binding Screws SNB countersink

Boxes with 50 pcs. each, A = length.

55-200-121	Countersink M6 x 10, 50 pcs.	pk.
55-200-122	Countersink M6 x 12, 50 pcs.	pk.
55-200-123	Countersink M6 x 16, 50 pcs.	pk.
55-200-124	Countersink M6 x 20, 50 pcs.	pk.



### Binding Screws SNB roundhead

Boxes with 50 pcs. each, A = length.

55-200-127	Roundhead M6 x 12, 50 pcs.	pk.
55-200-128	Roundhead M6 x 16, 50 pcs.	pk.
55-200-129	Roundhead M6 x 20, 50 pcs.	pk.



### Binding Screws Alpine / XC

Boxes with 50 pcs. each.

55-200-105	5,5 x 9,5 mm	pk.
55-200-106	5,5 x 11,5 mm	pk.
55-200-107	5,5 x 13 mm	pk.
55-200-108	5,5 x 15 mm	pk.
55-200-109	5,5 x 16 mm	pk.
55-200-111	5,5 x 18 mm	pk.
55-200-112	5,5 x 21,5 mm	pk.
55-200-113	5,5 x 28 mm, cylinder head	pk.
55-200-110	6,2 x 17,5 mm	pk.



### Screws Set Snowboard

Set with 200 pcs. screws consists of: each 20 pcs. countersink screws M6 x 10, 12, 16, 20, 25 mm; each 20 pcs. roundhead screws M6 x 10, 12, 16, 20, 25 mm.

55-200-120	200 pcs.	pk.
------------	----------	-----



### Screws Set Alpine

Set with 300 screws countersink flat head screws consisting of: 50 pcs. 5.5 x 9.5, 50 pcs. 5.5 x 11.5; 50 pcs. 5.5 x 13, 50 pcs. 5.5 x 15, 50 pcs. 5.5 x 16, 50 pcs. 6.0 x 16; 1 pc. binding glue 30 ml.

55-200-100	300 pcs.	pk.
------------	----------	-----



**Binding Glue 100 ml**

55-530-290      100 ml      pcs.

---



**Wooden Plugs, 100 pcs.**

55-530-410      100 pcs.      pk.

---



**Hole Plug Kit**

3000 pcs. hole plugs with 18 different colors.

55-530-431      3000 pcs.      pk.

---



**Individual Plastic Plugs**

Bags with 500 pcs. each.

55-530-430	mixed colours, 500 pcs.	pk.
55-530-432	white, 500 pcs.	pk.
55-530-433	red, 500 pcs.	pk.
55-530-434	yellow, 500 pcs.	pk.
55-530-435	blue, 500 pcs.	pk.
55-530-436	grey, 500 pcs.	pk.
55-530-437	black, 500 pcs.	pk.

---



**Plastic Plugs on bars**

50 pcs. on bars.

55-530-420	yellow	bar
55-530-421	red	bar
55-530-422	blue	bar
55-530-423	green	bar
55-530-424	black	bar
55-530-425	grey	bar
55-530-426	white	bar
55-530-427	clear	bar

---

# WORKSHOP ACCESSORIES

## Binding, Mounting and Repair



### Brake Retainer

A universal ski brake retainer with more flex that works with all bindings. This specially formulated rubber compound is tough, long lasting with 100% elongation.

56-400-114	Natural, 100 pairs, long	pk.
56-400-118	Blue, 100 pairs, long	pk.
56-400-110	Green, 100 pairs, short	pk.





Base Repair



**Heating Plate 230 V/ 50 Hz**

55-530-111      230 V, 50 Hz      pcs.



**Clamp for Heating Plate**

To fix the heating plate at the ski.

55-530-112      pcs.



**Base Repair Set with thermo plate 230V/ 50 Hz**

With binding glue, silicone paper, sintered base material (white, clear and black, 1 m each), 1 pc. punch rectangular, 1 pc. punch oval, 1 pc. punch semi-circular, 1 pc. heating plate, 1 pc. clamp.

55-530-101      With thermo plate 230V, 50 Hz      pcs.



**Hammer 500 g**

For punching.

55-530-114      500 g      pcs.



**Punch Plate 200 x 150 mm**

Protects your punches and bench tops from damage when punching out base patches.

55-530-113      200 x 150 x 25 mm      pcs.



### Silicone Paper 100 mm x 5 m

Use over base patches for easy release of the heating plate.

7019-01111-25      100 mm x 5 m      roll

2

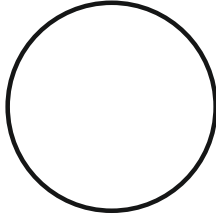


### Punches

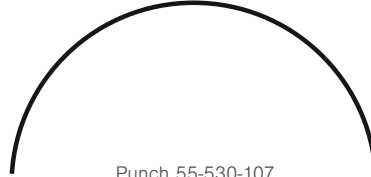
55-530-105	Rectangular	pcs.
55-530-106	Half oval	pcs.
55-530-107	Semi-circular	pcs.
55-530-126	Round, big	pcs.
55-530-122	Oval, small, closed	pcs.
55-530-127	Oval, big, closed	pcs.
55-530-129	Oval, small, open	pcs.
55-530-123	Oval, big, open	pcs.

### Spare Blades

55-530-134	Rectangular	pcs.
55-530-131	Half oval	pcs.
55-530-135	Semi-circular	pcs.
55-530-138	Circular, small	pcs.
55-530-136	Circular, large	pcs.
55-530-132	Oval, small, closed	pcs.
55-530-137	Oval, large, closed	pcs.
55-530-139	Oval, small, open	pcs.
55-530-133	Small, open	pcs.



Punch 55-530-126  
Spare blade 55-530-136



Punch 55-530-107  
Spare blade 55-530-135

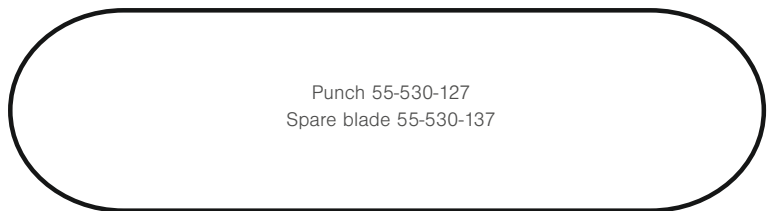


Punch 55-530-106  
Spare blade 55-530-131

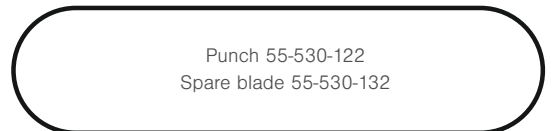
Scale 1:1



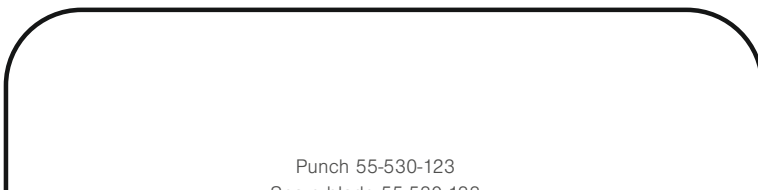
Punch 55-530-105  
Spare blade 55-530-134



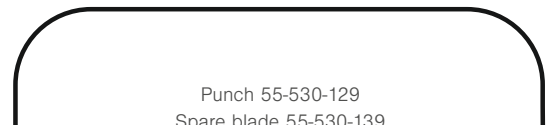
Punch 55-530-127  
Spare blade 55-530-137



Punch 55-530-122  
Spare blade 55-530-132



Punch 55-530-123  
Spare blade 55-530-133



Punch 55-530-129  
Spare blade 55-530-139



**Chisel**

55-530-140	Chisel 26 mm	pcs.
55-530-150	Chisel 16 mm	pcs.
55-530-155	Chisel 8 mm	pcs.



**Base Material**

Packages with 10 pcs. each.

7510-01111-06	Clear, 300x90x1,3 mm, 10 pcs.	pk.
7510-01111-05	Black 300x90x1,3 mm, 10 pcs.	pk.



**ARALDITE 2-Part-Adhesive 280 ml**

For permanent, high quality repairs. This epoxy provides the highest level of strength with wide flexibility to ensure that you only have to do the repair once.

55-530-280	2 x 140 ml	pk.
------------	------------	-----



**TECHNICOLL 2-Part-Adhesive 130g**

For permanent, high quality repairs. This epoxy provides the highest level of strength with wide flexibility to ensure that you only have to do the repair once.

55-530-285	60 g + 70 g = 130 g	pk.
------------	---------------------	-----



**ARALDITE 2012 Dispenser 50 ml fast hardening**

For a more comfortable use of the 2-part-epoxy glue, this syringe dispenser can be used with a syringe gun.

55-530-340	Work time: 4 min.	pcs.
------------	-------------------	------

# WORKSHOP ACCESSORIES

## Base Repair



### ARALDITE 2011 Dispenser 50 ml slow hardening

For a more comfortable use of the 2-part-epoxy glue, this syringe dispenser can be used with a syringe gun.

55-530-341      Work time: 100 min.      pcs.



### ARALDITE mixing nozzles, 10 pcs.

Mixing nozzles for dispenser 50 ml.

55-530-360      10 pcs.      pk.



### ARALDITE Econgung for Dispenser 50 ml

For a more comfortable use of the 2-part-epoxy glue, these syringe dispensers can be used with a syringe gun. With a mixing nozzle, the 2-part-epoxy is ready for use right away.

55-530-345      pcs.



### Colour Paste

With these colour pastes the epoxy glue can be coloured for reparings of the skis / snowboards and boots.

55-530-350	White, 50g	pcs.
55-530-351	Yellow, 50g	pcs.
55-530-352	Red, 50g	pcs.
55-530-353	Green, 50g	pcs.
55-530-354	Blue, 50g	pcs.
55-530-355	Black, 50g	pcs.



### Epoxy Accessory Items

Mixing cups and sticks to mix the colored glue and brushes for the application.

57-202-551	Mixing Cups (30g), 100 pcs.	pk.
57-202-552	Mixing Sticks, 50 pcs.	pk.
57-202-553	Epoxy Brushes ,12 pcs.	pk.





**Polygun III Repair Pistol, 300 W / 230V, 50 Hz**

55-560-306 1 x 220 – 230 V/ 50 Hz, 300 W pcs.



**Polygun II Repair Pistol, 375 W / 230V, 50 Hz**

55-560-304 1 x 220 – 230 V/ 50 Hz, 375 W pcs.



**Repair Pins**

Available quantities: bags with 10 pcs. or 1 kg (= 70 pcs.)

**Polygun**

55-560-310	Clear, 11,5x160 mm, 10 pcs.	pk.
55-560-311	Black, 11,5x160 mm, 10 pcs.	pk.
55-560-313	Graphite, 11,5x160 mm, 10 pcs.	pk.
55-560-315	Clear, 11,5x160 mm, 1 kg	pk.
55-560-316	Black, 11,5x160 mm, 1 kg	pk.
55-560-317	Graphite, 11,5x160 mm, 1 kg	pk.



**Drip Candles**

55-100-158	Clear, 8 x 200mm, 10 pcs.	pk.
55-100-156	Graphite, 8x200 mm, 10 pcs.	pk.



**Repair-Strips**

55-530-320	Clear, 1 kg	pk.
55-530-310	Black, 1 kg	pk.

# WORKSHOP ACCESSORIES

## Base Repair



### Metal Grip

Polyethylene wire with adhesive for very deep scratches at the base. ATTENTION: don't use with repair pistols!

55-560-330	Clear Ø = 5 mm, 0,4 kg roll	pcs.
55-560-331	Black, Ø = 5 mm, 0,4 kg roll	pcs.



### HW 130 Base Planer

55-240-401	Base Planer w. blade 130 mm	pcs.
55-240-406	Spare Blade 130 mm	pcs.
55-240-405	Spare Blade 100 mm	pcs.



### Base Scraper

Incl. doublesided hardmetal blade.

55-240-300	Scraper w. blade 50 mm	pcs.
55-240-302	Scraper w. handle+blade 65 mm	pcs.
55-240-305	Spare Blade 50 mm	pcs.
55-240-306	Spare Blade 65 mm	pcs.



### Radial File

Chromealloyed special steel, for removing repair material from base and sharpening of the edges.

55-500-040	L = 300 mm, chromealloyed	pcs.
55-500-004	L = 350 mm, chromealloyed	pcs.
55-500-041	Holder for radial file 350 mm	pcs.



### Grinding Block

Sanding paper can be fixed on both sides of the grinding block.

55-500-140	Grinding block 140mm	pcs.
55-500-143	Sanding paper gr.180, 50 pcs.	pk.
55-500-145	Sanding paper gr.240, 50 pcs.	pk.
55-500-147	Sanding paper gr.320, 50 pcs.	pk.



**SFI Base Planer**

55-240-350      255 x 40 mm      pcs.

**Spare Blade for SFI base planer**

55-240-355      255 x 40 mm      pcs.



**Base Polish Set 140 x 110 mm, 4 pcs.**

7019-01111-V4      2 pcs. each, coarse and fine      pk.



**Professional True Bar 150 mm**

Our best Tru Bar, a must for use with a stone grinder.

55-240-462      L = 150 mm      pcs.



**Metal Scraper**

To remove excess repair material from the base. After the repair material has cooled completely, use the metal scraper to remove the excess material and blend the repair into the base. (packaged for retail)

55-240-457      130 x 60 x 0,7 mm      pcs.



**Snowboard Metal Scraper-True Bar**

Handles make this true bar blade and base planer easy to use. The blade side is used as the tru bar, the square edge is the scraper.

55-200-010      320 x 30 x 3 mm      pcs.

### Edge Care



#### Sidewall Planer ERGO RAZOR

To remove sidewall material. The ERGO RAZOR sidewall planer is essential to prep for side edge filing as it is common for a file to be compromised by cutting into the sidewall of a ski. It is very important to remove the sidewall material to avoid loading files with plastic and to keep the sidewall from interfering with the bevel on the edge. The razor has an ergonomic design that fits into the palm of the hand. It is adjustable and can be used with both the right and left hands. It comes with a round cutting blade (packaged for retail).

57-401-100 \_\_\_\_\_ pcs.



#### Alu-Oxyd-File

To soften the edge. Absolutely necessary before using a finn file.

55-500-028      150 x 17 x 17 mm, grit 100 \_\_\_\_\_ pcs.



#### Combi Stone 150 x 50 x 25 mm

For edge polish.

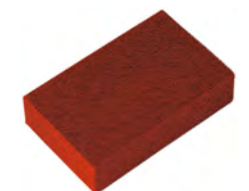
55-500-014      150 x 50 x 25 mm \_\_\_\_\_ pcs.



#### Gummi Stone 50 x 20 x 80 mm

This is a popular item used by every tuner. This soft gumi stone is used for fine polishing on the ski edge after grinding and filing jobs are finished. Sometimes referred to as an eraser stone.

55-420-240      50x20x80 mm, coarse, hard, grey \_\_\_\_\_ pcs.



#### Gummi Stone 40 x 20 x 65 mm

Softer than our regular gumi stone, this item is great for finer buffing and polishing on a ski and snowboard edge.

57-100-125      40x20x65 mm, very fine, soft, red \_\_\_\_\_ pcs.





**Soft Red Gummi Stone 40 x 20 x 65 mm**

For fine buffing and polishing on the edge. Starting at the tip of the ski/board, the gummi stone should be run at a 45 degree angle for up to 10 to 20 cm past the contact point. Making multiple passes, reducing the length of the stroke each time, feather the edge from the tip to the set bevels. Run the gummi stone from tip to tail to deburr and repeat the detune process in the tail (packaged for retail).

57-420-242          very fine, 40 x 20 x 65 mm          pcs.



**Brass File Brush**

To clean debris from the teeth of files.

55-500-035          pcs.



**File Brush 220 x 50 mm, double-sided**

Proper cleaning helps to prolong the life of a file. Use the brush side for general cleaning and the card side for stubborn clogging.

55-500-180          220 x 50 mm          pcs.



**BASE EDGE File Guide**

To bevel the base edge from 0,5 to 1,5 degree. This base edge file guide uses the same quality in design and materials as the standard BASE EDGE File Guides (packaged for retail).

57-401-112          0,5° – 1,5°          pcs.

# WORKSHOP ACCESSORIES

## Edge Care

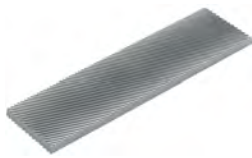
2



### File Guide PRO SHARP Race

This updated professional side edge sharpener gives very accurate bevels from 90 to 85 degrees. A large knob allows adjustment to one of the 6 possible positions without the need of a screwdriver. Innovative arrow pattern allows waste material to fall free of the base without damage and reduces friction. Accepts file, stones, and diamond stones up to 6 mm thick and comes with a 80 mm ICECUT file (packaged for retail).

57-401-030	85° – 90°	pcs.
------------	-----------	------



### Replacement Finn file 80 mm PRO SHARP RACE, RACING SHARP

57-401-174	Spare File 80 mm	pcs.
------------	------------------	------



### Angle File Guide Set 3 pcs.

Set with 3 guides: 0,5°, 1° and 1,5°. Produces accurate degrees of base bevel, suitable for files up to 20 mm width.

55-500-095	0,5°, 1° and 1,5 °	pcs.
------------	--------------------	------



### Spring Clamp 11cm, galvanized

To clamp the files at your Alu File Guide.

55-500-165		pcs.
------------	--	------



### Alu File Guide

Our precision anodized aluminum file guides are the perfect choice for the home tuner. Each guide is milled with a channel in the corner to allow filings to fall away from the base. Tools can be used with most files and diamond or abrasive stones. (packaged for retail)

57-401-300	90°	pcs.
57-401-301	89°	pcs.
57-401-302	88°	pcs.
57-401-303	87°	pcs.

Tuning Steps

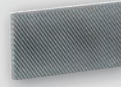
1



**Zirconium:**

Removes rock damage and burrs before using the file.

2



**File:**

Sharpens and sets the side edge angle at 90°, 89°, 88° or 87°.

3



**Diamond:**

Poishes and finish the edges. Best if used with water as a polishing solution.



**Racing Sharp**

Ergonomic design side and base edge sharpener is easy to use and allows your customers to maintain their edges between visits to your repair facility. Allows for 89° to 86° side edge bevel and 0.5° and 1° base edge bevel. (packaged for retail)

**Racing Sharp File Guide**

57-401-145	+ Finn File 80 mm	pcs.
57-401-146	+Zircon-,Finn-, Diamond File	pcs.

**Racing Sharp Spare Files**

57-401-173	Spare Zirconium File	pcs.
57-401-174	Spare File 80 mm	pcs.
55-500-108	Spare Diamond File	pcs.



**Quick Sharp**

Side edge sharpener for 89 - 88 degrees. The plastic molded tools are easy to use and carry on the hill. Packaged for retail.

**Quick Sharp Extra File Guide**

57-401-163	+ Zircon, Finn, Diamond File	pcs.
------------	------------------------------	------

**Quick Sharp File Guide**

57-401-161	+ Finn File 40 mm	pcs.
------------	-------------------	------

**Quick Sharp Spare Files**

57-401-173	Spare Zirconium File	pcs.
55-500-106	Spare Finn File 40mm	pcs.
55-500-108	Spare Diamond File	pcs.



**ICECUT Professional File**

Files with Swiss precision. Used by World Cup technicians because of the precise cut teeth, comfortable tangless design, highest hardness and extended life time.

55-500-037	120 x 22 mm	pcs.
55-500-038	150 x 17 mm	pcs.
55-500-039	200 x 22 mm	pcs.

# WORKSHOP ACCESSORIES

## Edge Care

2



### ICECUT Racing File

New type of racing file with special steel for racing use with an extremely long life time! Manufactured in a special steel and from the latest cutting technology, this file presents three major advantages compared to a traditional ski file: it sharpens faster, has an increased lifetime and gives to the edges a powerful sharp side. The best file for advanced sportsmen, preparation workshops and for professional skier.

55-500-042	100 x 22 mm, fine	pcs.
55-500-044	100 x 22 mm, medium	pcs.



### Finn Files with Cover

High quality file for sharpening side and base edge. These are the same files used by World Cup service technicians and service shops around the world. Guaranteed for their quality and straightness, these are the best files you will find for the money.

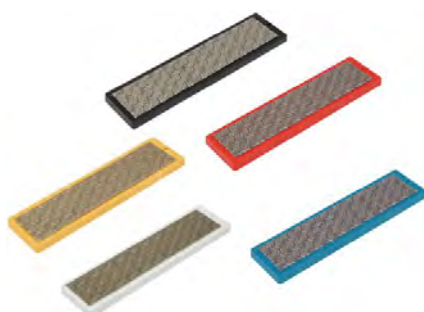
55-500-130	150 x 15 mm, Cut 2	pcs.
55-500-131	200 x 20 mm, Cut 1	pcs.
55-500-132	250 x 25 mm, Cut 1	pcs.



### Diamond File Sport

The latest in diamond stone technology, this is the best diamond stone we have ever used. The rigid composite body resist flex during use. Best used with water.

57-401-210	Grit 600, fine, 70 mm	pcs.
57-401-211	Grit 400, medium, 70 mm	pcs.
57-401-212	Grit 200, coarse, 70 mm	pcs.
57-401-220	Grit 600, fine, 100 mm	pcs.
57-401-221	Grit 400, medium, 100 mm	pcs.
57-401-222	Grit 200, coarse, 100 mm	pcs.



### Moonflex File

These diamond files with a unique design of the diamond pattern removes material but leaves no striations for a fine polish. Best if used with water.

55-500-151	Grain 100, 102 x 25mm, black	pcs.
55-500-152	Grain 200, 102 x 25mm, red	pcs.
55-500-154	Grain 400, 102 x 25mm, yellow	pcs.
55-500-156	Grain 600, 102 x 25mm, white	pcs.
55-500-158	Grain 1500, 102 x 25mm, blue	pcs.
55-500-161	Grain 100, 70 x 25 mm, black	pcs.
55-500-162	Grain 200, 70 x 25 mm, red	pcs.
55-500-164	Grain 400, 70 x 25 mm, yellow	pcs.
55-500-166	Grain 600, 70 x 25 mm, white	pcs.
55-500-168	Grain 1500, 70 x 25 mm, blue	pcs.





NEW

**Discman 4 with original Makita Li-ion battery (1.500 mAh)**

The mobile grinding tool for side-edge angles between 85° and 90° at skis & snowboards. Including grinding disc, tools for changing the disc, chargeable battery and battery charger. By using a ceramic disc, this grinder enables fast and exact re-sharpening of the side edge in steps of 0.5°. For base edge tuning between 0.5° and 2° the optional base edge tuning attachment is needed.

- With MAKITA lithium-ion battery 1.500 mAh and MAKITA battery charger.
- With a very short charging time of the Li-Ion battery: only approx. 20 minutes.
- The lightweight lithium-ion battery enables a weight reduction of 400 grams at the Discman 4 with battery.
- Including a dust magnet for collecting the metal dust during grinding.
- NEW: In addition each Discman 4 is equipped with a new grinding support. This enables a larger contact surface at the base when grinding the side edge and facilitates the handling of the device at the ski.

55-100-670 With battery+charger 230V/50Hz pcs.



NEW

**Discman 4 with Transformer 230V-50Hz/ 18 V and a 3 m**

Electrical grinding tool for side-edge angles between 85° and 90° at skis & snowboards.. Including grinding disc, tools for changing the disc and transformer. By using the ceramic disc, this grinder enables fast and exact re-sharpening of the side edge in steps of 0.5°. For base edge tuning the optional base edge tuning attachment is needed.

- With transformer 230V/18V, 50 Hz and a 3 m long power cable with EURO plug.
- With a very short charging time of the Li-Ion battery: only approx. 20 minutes.
- Including a dust magnet for collecting the metal dust during grinding.
- NEW: In addition each Discman 4 is equipped with a new grinding support. This enables a larger contact surface at the base when grinding the side edge and facilitates the handling of the device at the ski.

55-100-671 Corded Discman 230V/ 50 Hz pcs.



NEW

**Discman 4 Transformer Kit 230V-50Hz/ 18 V and a 3 m long power cable**

Transformer 230V/18 V, 50 Hz with 3 m long connection cable and battery housing. By this retrofit kit any battery operated Discman 4 device can be operated either by battery or by external transformer and power cord.

55-100-672 18 V – 230 V / 50 Hz pcs.



NEW

**Discman 4 solo without battery / battery charger**

Electrical grinding tool for side-edge angles between 85° and 90° at skis & snowboards, without battery and battery charger. Including grinding disc and tools for changing the disc. By using a ceramic disc, this grinder enables fast and exact re-sharpening of the side edge in steps of 0.5°. For base edge tuning the optional base edge tuning attachment is needed. This Discman device without battery and battery charger can be used with a 18 V Makita Li-Ion battery 1,5 Ah, 3 Ah or 4Ah.

- Including a dust magnet for collecting the metal dust during grinding.
- NEW: In addition each Discman 4 is equipped with a new grinding support. This enables a larger contact surface at the base when grinding the side edge and facilitates the handling of the device at the ski.

55-100-673 pcs.



NEW

**DISCMAN Li-Ion Battery Makita 18V/1,5Ah**

55-100-674 18 V / 1,5 Ah pcs.



**NEW**

### DISCMAN Battery Charger Makita 230V/50Hz

55-100-675 18 V - 240 V / 50 Hz pcs.

2



### Discman 2/ 4 Base Edge Tuning Attachment

For the optional use with Discman 2 and Discman 4.

55-100-680 0,5° - 2° pcs.



### Discman Grinding Set

Including 1 pair of edge guides. For precise edge angles the edge guides should be replaced together with each change of the disc.

56-221-020 Ø 35 mm, blue pk.



### Discman Polishing Set

Including 1 pair of edge guides. For precise edge angles the edge guides should be replaced together with each change of the disc.

56-221-021 Ø 35 mm, orange pk.



### Discman Replacement Angel Adjuster

64-140-863 pcs.



### Discman Cleaning Brush 135mm

To clean the housing of the grinding disc.

55-500-320 L = 135 mm pcs.



### Discman Abrasive Dust Collector

Suitable to Discman 2/ 4 as of 2013. Helps to collect the fine metal dust.

55-100-689 pcs.



**Discman 2 Spare Battery 18V**

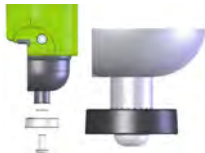
Without battery charger. Nickel Metal hydride battery, 2.200 nAh.

55-100-652      18 V      pcs.

**Discman 2 Battery Charger 240V/18V, 50 Hz**

For Ni-Mh-Battery, art. no. 55-100-652.

55-100-653      18 V – 240 V / 50 Hz      pcs.



**Discman Angle Wheels**

For the optional use with both types of the Discman. With those angle wheels, the Discman glides more smoothly over the structures base.

55-100-687      87°      pcs.  
 55-100-688      88°      pcs.

**Waxing Machines and Accessories**



**Waxjet Pro 1AC, 208 - 240V/ 50 - 60 Hz**

7570-404-33      pcs.

**Stand with Wheels for Waxjet Pro**

7570-0111-V01      61 x 59 x 45 cm (L x W x H)      pcs.



**Option: Edge Deburring Wheel Waxjet Pro**

7570-0211-V10      pcs.



**Waxjet 93, 208-240V/ 50 - 60 Hz**

7568-403-33      208 - 240 V, 50/60 Hz, 1 AC      pcs.

# WORKSHOP ACCESSORIES

## Waxing Machines and Accessories

2



### Stand with Wheels for Waxjet 93

7925-401	75 x 48 x 51 cm (L x W x H)	pcs.
----------	-----------------------------	------



### Wax Iron WINTERSTEIGER 220 - 240 V/ 50 Hz, 800 W

High quality wax iron for skis and snowboards. Fine tuned thermostat reduces temperature fluctuations and a thick metal base holds heat to prevent damage during waxing. (packaged for retail)

57-100-290	220-240V/ 50 Hz, 800 W	pcs.
------------	------------------------	------



### Wax Iron WINTERSTEIGER Digital, 230 V/ 50 Hz, 1000 W

Precise temperature settings with digital control combine with a highly accurate thermostat to ensure a correct, constant temperature. Adjustable from 80° to 180°C. The 15 mm thick heating plate with innovative dimpled surface which allows the wax iron to easily move across the base by reducing suction. The beveled edges let melted wax flow over the entire base evenly for consistent results.

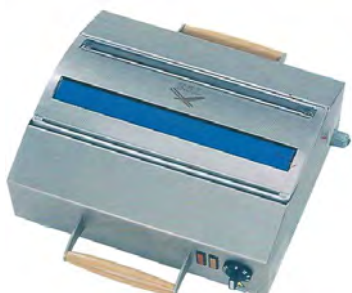
57-100-310	230 V/ 50 Hz, 1000 W	pcs.
------------	----------------------	------



### Waxpro 40

The handy waxer with changeable wax tub, adjustable waxing temperature, wax application in a few seconds and exact dosing. Including 120 mm wide wax roller.

55-115-005	Waxpro 40, 1 x 220-230V/50Hz	pcs.
55-115-006	Spare Tub with 2 rollers	pcs.



### Waxpro 350

Handy waxer for snowboards including 350 mm wide wax roller, similar to Waxpro 40.

55-115-007	Waxpro 350, 1 x 220-230V/50Hz	pcs.
55-115-012	Spare Silicone Roller ,350 mm	pcs.
55-115-022	Optional Scraper with Cover	pcs.
55-115-023	Optional Wax Tray with Cover	pcs.







## Thermo Jomax

A roll up Hot Box that allows for deep penetration of wax into the base without the bulk and hassles of a traditional hot box. The temperature is regulated to 55° - 65° C so the core and base material is not overheated but enables deep penetration of wax into the base. To use simply unroll the bag and place each ski, base down on either side of the Thermo-Jomax bag and clamp the skis together. Plug the bag in and allow it to slowly reach the proper temperature for 5 to 10 minutes, saturation of the base will take an additional 60 to 90 minutes. After this time unplug the bag and allow to slowly cool back down to room temperature. For nordic skis position the rolled-out thermal cover on the top side of the two ski supports. Place two cross-country skis on the thermal cover next to one another with the base facing down and slip the ends of the skis into the pockets at the end of the thermal cover. Close the velcro straps all the way down the ski. This puts the thermal cover in direct contact with the base of the cross-country skis. The saturation of the base takes about 60 - 90 minutes as with the alpine skis.

- Bag can be easily wiped clean while the wax is still warm
- Recommended separate bags for different race waxes
- Maximum wax penetration at low temperatures
- Will not damage the base of the core
- First choice for factory and national race teams
- The Thermo-Jomax Nordic can also be used for alpine skis



### Thermo Jomax Alpine 240V, 50Hz

55-115-430      240V, 50Hz, 350W, w/o Clamps      pcs.



### Thermo Jomax Set of 3 Clamps

For Alpine Thermo JOMAX.

55-115-432      pk.



### Thermo Jomax Nordic 240V, 50Hz

55-115-431      240 V, 50 Hz, 350 W      pcs.



### Block Wax WINTERSTEIGER

1 Counter Top Display Box = 80 x 30 g = 2,4 kg, for hot waxing of skis and snowboards.

55-640-350	2,4 kg, yellow/warm, -8°C to 0°C	pk.
55-640-355	2,4 kg, blue/cold, -8°C to -20°C	pk.
55-640-360	2,4 kg, white, universal	pk.



### Wax Flakes WINTERSTEIGER

5 kg box, for hot waxing of skis and snowboards.

55-640-310	5 kg, yellow/warm, -8°C to 0°C	pcs.
55-640-315	5 kg, blue/cold -8°C to -20°C	pcs.
55-640-320	5 kg, white, universal	pcs.

## Waxing Material and Accessories



### Wax Remover WINTERSTEIGER 1 lt. bottle

For removing grease, wax, adhesives and cleaning.

55-640-305	1 lt.	pcs.
------------	-------	------

### Wax Remover WINTERSTEIGER 5 lt. can

55-640-300	5 lt.	pcs.
------------	-------	------



### Power Pump 1,5 lt.

Handy pump sprayer for the application of liquid wax or wax remover/ base cleaner.

55-640-147	Without liquid, 1,5 lt.	pcs.
------------	-------------------------	------

# WORKSHOP ACCESSORIES

## Waxing Material and Accessories



### Paper Tape Racing Service, 1 roll = 50 m

This paper tape is multi-functional with a multitude of uses. Bases can be covered and protected if edges are prepared manually. During waxing the ski bindings can be protected against wax by applying the tape on the side of the ski/board. Printing forms can be attached to the ski and can be removed spotless without sticky residue.

55-500-170      1 Roll = 50 m, W = 50 mm      pcs.



### Plexi Scraper Alpine 130 x 60 x 3 mm

To remove cooled wax from the base. After the wax has cooled to room temperature, any excess must be scraped off and the structure must be brushed. Always allow the wax and the ski or snowboard to cool to room temperature before scraping, otherwise the warm wax will be pulled from the pores, leaving the base dry.

55-200-013      130 x 60 x 3 mm      pcs.



### Plexi Scraper Snowboard 320 x 70 x 5 mm

55-200-015      320 x 70 x 5 mm      pcs.



### Plexi Scraper 200 x 60 x 3 mm

55-200-014      200 x 60 x 3 mm      pcs.



### Plexi Scraper 150 x 60 x 4 mm

55-240-450      150 x 60 x 4 mm      pcs.



### Scraper Sharpener PLEXI SHARP

Designed to meet the needs of race service personal and service techs alike. The tall sides hold the plastic scraper in the perfect upright position while the large base provide a stable platform to hold the tool. The plastic is removed by a replaceable 100 mm panzer file and requires no adjustment to the blade.

57-203-430      Scraper Sharpener      pcs.



### Replacement File 100 mm for Scraper Sharpener

57-203-432      Replacement Blade 100 mm      pcs.



**Wax Brush Bronze 120 x 70 mm**

This stiff, all-bronze base brush is perfect for cleaning out wax in a coarse structure on the base before applying hot wax. Comes with a hang tag and sticker, packaged for retail.

55-500-077      120 x 70 mm      pcs.

**Wax Brush Horsehair 120 x 70 mm**

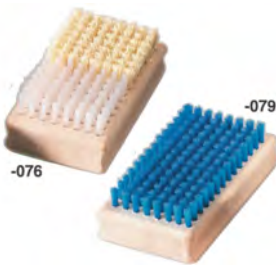
This is a high quality brush used for cross-country, alpine and snowboard tuning. An essential tool for the serious tuner to expose the base texture. Comes with a hang tag and sticker, packaged for retail.

55-500-078      120 x 70 mm      pcs.

**Wax Brush Nylon 120 x 70 mm**

General purpose stiff nylon bristle brush. Perfect for wax texturing. Comes with a hang tag and sticker, packaged for retail.

55-500-016      120 x 70 mm      pcs.



**Base Brush Soft 120 x 70 mm**

This soft nylon brush is the ideal tool for base finishing.

55-500-079      120 x 70 mm      pcs.

**Base Brush Fiber/Nylon 120 x 70 mm**

Made out of fiber and nylon, this brush is very useful for cleaning and polishing. Use the fiber side for a deep cleaning of all base structures, followed by the nylon for a fine finish.

55-500-076      120 x 70 mm      pcs.



**Horsehair Brush oval, 210 x 90 mm**

To expose the base texture with fine-grain snow.

55-500-111      210 x 90 mm      pcs.

**Nylon Brush oval, 210 x 90 mm**

To expose the base texture with coarse-grain snow.

55-500-112      210 x 90 mm      pcs.

**Bronze Brush oval, 210 x 90 mm**

Perfect for cleaning out a coarse structure before applying hot wax.

55-500-110      210 x 90 mm      pcs.



**RC Roto Brush Bronze 10 mm**

The ideal brush to clean stone-ground skis before waxing. Also used for structuring and hard wax removal. Use single shaft with plexi hood. Max. 800 rpm.

55-500-306      Bristle L.= 0.06x10mm, W=100mm      pcs.

# WORKSHOP ACCESSORIES

## Waxing Material and Accessories



### RC Roto Brush Nylon grey 4 mm

Used after horsehair, black nylon, or cork roller. Goes deep into the structure to remove excess wax as well as polish. General use as a final brush.

55-500-304      Bristle L. = 0.2x4mm, W=100mm      pcs.



### RC Roto Brush Horsehair 6 mm

High quality brush used as final pass to expose the structure and reduce static charge.

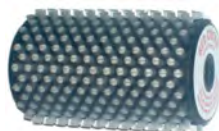
55-500-307      Bristle L. = 0.25x6mm, W=100mm      pcs.



### RC Roto Brush Nylon black 11 mm

All around brush. For removal and polishing of medium or hard paraffin waxes.

55-500-305      Bristle L. = 0.2x11mm, W=100mm      pcs.



### RC Roto Brush Steel, fine

Used to open and clean the structure, can be very aggressive and should be used at speed under 1000 rpm with eye protection. Never press down while using the steel brush.

55-500-314      Bristle L.= 0.04x10mm, W=100mm      pcs.



### RC Roto Cork Roll

For melting additives, fluoro powder and even fluoro paraffins.

55-500-311      W = 100 mm      pcs.



### RC Roto Brush Nylon 4 mm, for Snowboard

Used as a final step. Removes excess pure fluorocarbon additives with very good results.

55-500-308      Bristle L. = 0.12x4mm, W=300mm      pcs.





**RC Single Handle with protection**

Long-life, stainless ball bearings and rubber handle. For use with one brush.

55-500-309

pcs.



**RC Double Handle Alpine with single protection**

Long-life, stainless ball bearings and rubber handle. To be used with two ski brushes 100 mm wide. Can not be used with snowboard brush.

55-500-318

pcs.



**RC Roto Brush Horsehair for Snowboard (300 mm wide)**

Used to expose the structure and reduce static charge on snowboards.

55-500-316

Bristle L. = 0.25x6mm, W=300mm

pcs.



**RC Roto Brush Handle Snowboard**

Long-life, stainless ball bearings and rubber handle. To be used with snowboard brushes or two ski brushes.

55-500-310

pcs.

### Pole accessories



#### Ski Pole Cutting Tool

55-500-001	Ski Pole Cutting Tool + Blade	pcs.
55-500-010	Spare Blade 3 mm	pcs.



#### Grip and Basket Mounting Tool

For assembly and disassembly of pole baskets and handles, also suitable for telescoping poles.

55-650-100	Grip and Basket Mounting Tool	pcs.
55-650-101	Spare Clamping Jaws, 1 set	pk.
55-650-102	Spare Mounting Adapter, 1 pair	pk.



#### Ski Pole Accessories black

55-650-115	Racing Basket small Ø 50 mm	pair
55-650-116	Racing basket large Ø 65 mm	pair
55-650-117	Universal Basket large Ø 60mm	pair
55-650-118	TÜV basket small Ø 70 mm	pair
55-650-119	TÜV basket small Ø 75 mm	pair
55-650-129	Touring Basket Ø 120 mm	pair
55-650-130	Conical Racing Basket Ø 95 mm	pair
55-650-120	Universal Basket Adaptor	pair
55-650-121	Leki Basket Adaptor	pair
55-650-122	Reduction Adaptor	pair
55-650-123	Spring Lock Washer 11 mm	pair
55-650-124	Spring Lock Washer 10 mm	pair
55-650-126	Basket Grip 18 mm with Strap	pair
55-650-127	Nylon Strap black	pair
55-650-128	Nylon Strap black with Eyelets	pair

General Workshop Accessories



**Tool Box 350 x 180 x 290 mm, with 5 drawers**

With 5 pull out drawers for ample storage.

55-100-930	350 x 180 x 290 mm	pcs.
------------	--------------------	------



**Workshop Service Sticker**

With consecutive numbering, minimum order: 1 bag = 100 pcs., informs your customer about the service steps and the advantages of a service.

78-300-780	German, 22,5 x 6 cm, 100 pcs.	pk.
78-300-781	English, 22,5 x 6 cm, 100 pcs.	pk.
78-300-782	French, 22,5 x 6 cm, 100 pcs.	pk.
78-300-783	Italian, 22,5 x 6 cm, 100 pcs.	pk.





ANALYZE



SELECT



CUSTOMIZE

# BOOTDOC

## YOUR SPECIALIST FOR CUSTOMIZED ATHLETIC FOOTWEAR

Discover our **BOOTDOC** and **HOTRONIC** products. **BOOTDOC** stands for foot analysis systems, customized insoles, power fit socks and foam liners. Discover how you can achieve the perfect fit in just 3 steps, and contact your regional sales manager for details of boot fitting options.

**The new Vandra 3D foot scanner delivers a three-dimensional image of both feet in seconds.**

It provides a wealth of measurement data on instep height, ankle circumference, inner feet length and so on while also recommending sizes.

### **HOTRONIC**<sup>®</sup> HEATING SYSTEM

**HOTRONIC** Heat Socks, heatable insoles, and boot and glove dryers complement the product range for end consumers.



BD FF S9



BD BEEDEE 9



BD 3D SCANNER VANDRA



# BOOTDOC

TUNE YOUR FEET



HEAT SOCKS ONLY XLP  
PFI 50 - CLASSIC



BD ANATOMIC INSOLES XLP

hottronic.com  
boot-doc.com







# BOOT FITTING / BOOT DISINFECTION

## Ultracam, Rivets, Shaft Grinder



### Ultracam Last and Instep Set

A must have accessory for the Ultracam boot press features two lasts for length stretching and a instep tool. Available only through WINTERSTEIGER boot fitting, this accessory set allows for stretches that were next to impossible before. For stretching the length of the boot, choose from a long or a short last for boot size. The Instep tool attaches to forefoot lasts size M and L. It has an element built in for fast easy stretches in the instep region of any ski boot or other footwear.

55-104-120 \_\_\_\_\_ pcs.



### Ultracam Instep Tool Small

This small instep tool with heating element suits to the small lasts.

55-104-225 \_\_\_\_\_ pcs.



### Ultracam Ankle Ball oval

Expands problem areas near the insole.

55-104-224 \_\_\_\_\_ pcs.



### Ultracam Heel Adaptor + Heating Element

Used on the ankle punch, this new ball and ring style last includes multiple elements to allow for clean expansion of the heel pocket.

55-104-220 \_\_\_\_\_ pcs.



### Work Bench 800 x 525 x 905 cm with wheels and drawers

Incl. wooden worktop, wheels and 3 lockable drawers, the perfect stand for your Boot Fitting Machine.

55-125-200      800 x 525 x 905 mm \_\_\_\_\_ pcs.



### Ultracam Boot Opener

Easy to use tool to open boot shells for better accessibility when grinding the inner shell and removing or attaching boot buckles. A must have tool for any custom boot fitter.

55-104-125

pcs.



### Boot Repair Sets and components

The set 55-112-016 consists of countersink screws M3 x 6/8, M4 x 8/12, M5 x 8/12, cylinder head screws M3 x 6, roundhead screws M3 x 6 washers M4 / M5, screw type oval rivets M3 x 5, M4 x 5, lunar nuts M3 x 5, M4 x 6 and M5 x 8 (total more than 550 pcs.).

55-112-016	Set with more than 550 pcs.	pcs.
55-112-017	Countersink M4x8, 500 pcs.	pk.
55-112-018	Countersink M5x8, 500 pcs.	pk.
55-112-019	Countersink M4x12, 500 pcs.	pk.
55-112-020	Countersink M5x12, 500 pcs.	pk.
55-112-021	Screw type rivets M3x5,500pcs.	pk.
55-112-022	Screw type rivets M4x5,500pcs.	pk.
55-112-023	Lunar nuts M4x6, 500 pcs.	pk.
55-112-024	Lunar nuts M5x8, 500 pcs.	pk.

### Rivet Machine NM-11/21 incl. Tool Set

This riveting device comes with two tool holder. A large U-shaped holder for processing the rivets of ski boots. A small U-shaped holder for the ideal processing of rivets of ice-skate-blades. The supplied tool set includes tools to work with semi-tubular rivets, copper rivets and eyelets.



55-112-006

pcs.



### Spare Tool Set N21

55-112-025

pcs.



### Tool 28 / 29 for Joint Rivets

For very large joint rivets up to 25 mm.

55-112-041

pcs.

# BOOT FITTING / BOOT DISINFECTION

## Boot Disinfection and Deodorisation



### Semi-Tubular Rivets for Rivet Machine NM-11/21

55-112-030	Semi-tubular riv.10mm,100 pcs.	pk.
55-112-031	Semi-tubular riv.12mm,100 pcs.	pk.
55-112-032	Semi-tubular riv.14mm,100 pcs.	pk.
55-112-033	Semi-tubular riv.16mm,100 pcs.	pk.
55-112-034	Semi-tubular riv.18mm,100 pcs.	pk.
55-112-035	Semi-tubular riv.20mm,100 pcs.	pk.
55-112-036	Semi-tubular riv.22mm,100 pcs.	pk.
55-112-037	Semi-tubular riv.24mm,100 pcs.	pk.



### Copper Rivets for Rivet Machine NM-11/21

55-112-038	Copper rivets 26mm, 100 pcs.	pk.
55-112-039	Copper rivets 32mm, 100 pcs.	pk.



### Eyelets for Leather Boots, 100 pcs.

For Rivet Machine NM-11/ 21.

55-112-040	100 pcs.	pk.
------------	----------	-----



### Flexible Shaft Grinder Kit

A professional tool for boot fitting, variable speed 11.000 – 25.000 rpm, 230 V/ 50 Hz, 500 W, shaft length 1,5m, with 3 m long power cord.

55-104-320	Basic device, 230 V, 50 Hz	pcs.
55-104-322	Flexible shaft, L = 1,5 m	pcs.
55-104-324	Shaft 6mm, M12	pcs.
55-104-330	Spare spindle shaft 4mm,L=1,5m	pcs.

### HSS Grinding Burr

55-104-326	HSS ball shaped burr M12,ø30mm	pcs.
55-104-328	HSS drop burr M12,30x25mm	pcs.



### BD Foot Sizing Device Brannock

Stable aluminium foot sizing device for determining exact length in mondopoint size and width in mm.

57-305-004	Up to MP 34.0	pcs.
57-305-007	Junior, up to MP 24.0	pcs.



## Boot Disinfection and Deodorisation

### Easyfresh Device + Helmet Option

Bacteria have no chance anymore with Easyfresh! With two nozzles on each arm the whole boot can be disinfected perfectly. The compact machine has two arms for boots and one flexible nozzle for the treatment of helmets. Therefore your boots and helmets are always fresh and sanitized! !

- the flow rate und spray period can be choosen on the control panel
- compressed air needed (6 bars pressure from the workshop outlet or a small separate compressor)
- space for 2 separate liquid cans (5 lt. each), 1 for boots and 1 for helmets
- works without electricity for a maximum of safety and reliability



#### Easyfresh Disinfection Device for Boots

Disinfection device for boots. Basic device with two arms for boots.

7368-03

pcs.

#### Easyfresh Option for Helmet, incl. 5 lt. HELMET FRESH

Flexible nozzle for helmets. Including 5 lt. disinfection liquid HELMET FRESH for helmets.

7368-0912-V01

pcs.

#### Compressor Schneider Silent Master

For Easyfresh disinfection device; compact compressor which fits into the frame of the Easyfresh.

33-100-331

1 x 230 V, 50 Hz, 0,55kW

pcs.



# BOOT FITTING / BOOT DISINFECTION

## Boot Disinfection and Deodorisation



### Shoe Fresh / Helmet Fresh ECO

Water-based, ecological disinfectant for shoes and helmets. Spray several times inside the shoes, helmets and allow to dry about 15 minutes.

- Smell: Eucalyptus
- Without alcohol
- Biodegradable
- Includes no synthetic perfume
- Recyclable cans made of HDPE
- Approved disinfection efficiency according EN 1276

55-100-880	SHOE FRESH, 500 ml pump spray	pcs.
55-100-885	Helmet fresh,500 ml pump spray	pcs.
55-100-865	SHOE FRESH, 5 lt. can	pcs.
55-100-870	HELMET FRESH, 5 lt. can	pcs.



### STERIBIO Disinfection and Deodorization liquid

The bactericidal and fungicides effect of the disinfectant and deodorizer liquid STERIBIO were tested in the laboratory and correspond to the standards DIN EN 1040 as well as DIN EN 1075.

55-100-768	5 lt. can, smell: freshness	pcs.
55-100-773	5 lt. can, smell: pin/ment	pcs.



### Spray Bottle 500 ml for Disinfection

For disinfection and deodorizer liquids. Without liquid.

55-100-769	500 ml	pcs.
------------	--------	------



### Spray Bottle 1 lt. with 90°-extension

- For disinfection liquids, without content
- With this 90°-extension the toe box area of the boots can be treated perfectly
- With adjustable spray nozzle

55-100-811	1000 ml	pcs.
------------	---------	------



### Spray Extension 90°

Suitable to the Spray Bottle art.no. 55-100-811.

55-100-813		pcs.
------------	--	------



### SILICOL Cleaner for Boots and Skis, 6 x 750 ml

For boots and skis.

- Cleans and makes shine
- Brightens colours up
- Sets an antistatic, antidust and hydrophobe film down
- Dries without leaving of marks
- Sweet smell for a pleasant use

55-100-847      6 pcs, 750 ml each      pcs.



### Bactoboots Disinfection Liquid 10, lt.

Liquid product ready for use. For ski boots and sport shoes to use with the Easystore Boot Dryer PREMIA PRO.

55-100-830      10 lt. Can      pcs.



### Disinfection Liquid DESINEX 5 lt.

For lockers with automated liquid disinfection.

55-100-855      5 lt. Can      pcs.



### Deodorizer Lemon, 5 layers

For easystore Boot Dryers OPTIMA, PREMIA, INNOVA.

55-100-806      100 x 50 x 5 mm      pcs.



### Air-Refresher Tab, Ø 53 mm, 10 pcs.

Deodorizer for Easystore Flex drying modules OPTIMA and PREMIA. Lifetime: approx. 4 weeks.

55-100-807      Ø 53 mm, 10 pcs.      pk.



### Deodorizer Granules

For boot dryer EOLE INNOVA, EOLE 1 / 6 / 7 / 9 / OPTIMA.

55-100-772	Vanilla, box with 24 bags	pk.
55-100-774	Vanilla, box with 10 bags	pk.
55-100-761	Caribic, box with 24 bags	pk.
55-100-762	Caribic, box with 10 bags	pk.

## The WINTERSTEIGER automation family

### Scout – Maximum performance from a compact footprint!

**Automatic Service Station for skis – stone / disc processing on smallest room.**

In developing the Scout, WINTERSTEIGER has decoupled size and performance once and for all. Due to the compact design of the machine, even small workshops now have enough space to make the move from manual ski servicing to automated, cutting-edge technology. One operator on the Scout achieves almost twice the throughput as two manual machines with one operator.

In other words, the Scout's intelligent design means that upgrading to an automated machine is no longer about space, but economic sense.



Ceramic  
Disc  
Finish

**Scout**  
Automatic Service Station  
for skis

### Discovery – The logical continuation of a success story!

**Automatic Service Station for skis and snowboards.**



**Discovery**  
with 8 processing modules

Ceramic  
Disc  
Finish



**Discovery**  
with 2 processing modules

Ceramic  
Disc  
Finish

### Mercury – Enter the world of high end service!

**Automatic Service Station for skis and snowboards.**



Ceramic  
Disc  
Finish

**Mercury**  
with manual loading and  
2 processing modules



Ceramic  
Disc  
Finish

**Mercury**  
with automated loading unit and  
3 processing modules



**Trim B**  
Side Edge Grinder for skis and snowboards



**Ceramic Disc Finish**  
**Trimjet 2 / Trimjet 2 R**  
Automatic Doublesided Disc Edge Grinding and Tuning Machine for skis and snowboards



**Ceramic Disc Finish**  
**Trim Disc 71**  
Automatic Edge Grinding and Tuning Machine for skis and snowboards



**Omega RS 150, RS 350**  
Stone Grinder for skis and snowboards



**Race NC**  
Numerically Controlled Single Stone Grinder



**Omega B**  
Belt Grinder for skis and snowboards



**Omega S 150, S 350**  
Stone Grinder for skis and snowboards



**Omega SBI, RSBI**  
Combined Stone and Belt Grinder for skis and snowboards



**Sigma Eco**  
Belt Grinder for skis and snowboards



**Basejet**  
Automatic Base Extruder



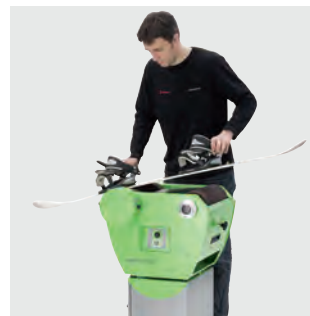
**Safetronic**  
Ski Binding Testing and Adjustment Machine



# Waxjet Pro

## Hot Waxing Machine for Skis and Snowboards.

The Waxjet Pro from WINTERSTEIGER provides excellent waxing results featuring a short heat-up time. The new heating system provides a precise temperature control, while using up to 60 % less energy than comparable products. The optional edge deburring wheel and the easy roll exchange offers a very user-friendly service.



4

### Your benefits summed up:

- Low energy consumption (-60 %\*)
- Excellent wax results
- Short heat-up time
- Precise temperature control
- Operation from both sides of the machine is possible
- Easy roll exchange
- Compact design for minimum footprint
- Optional edge deburring wheel

\* Savings of up to 60 % over comparable products.

### Technical specifications

<b>Dimensions (L x W x H)</b>	610 x 590 x 480 mm (24" x 23.22" x 19")	
<b>Working height with pedestal</b>	910 mm (35.83")	
<b>Noise emission</b>	< 70 dB (A)	
<b>Weight</b>	90 kg with stand, 70 kg without stand	
<b>Nominal voltage</b>	1 AC, 208 - 240 V, 50/60 Hz	1 AC, 110 V, 60 Hz
<b>Nominal load</b>	1.75 kW	1.55 kW
<b>Rated current</b>	6,5 A	12 A
<b>Fuse protection min./max.</b>	10/16 A	13/15 A
<b>Waxjet Pro – 7570-404-33</b>	1 AC, 208 - 240 V, 50/60 Hz	
<b>Waxjet Pro – 7570-404-43</b>	1 AC, 110 V, 60 Hz	
<b>Optional Stand – 7570-0111-V01</b>		
<b>Optional Deburring Wheel – 7570-0211-V10</b>		

We reserve the right to make technical alterations.



### Waxjet Pro 1AC, 208 - 240V/ 50 - 60 Hz

7570-404-33

pcs.

### Stand with Wheels for Waxjet Pro

7570-0111-V01

61 x 59 x 45 cm (L x W x H)

pcs.



**Option: Edge Deburring Wheel Waxjet Pro**

7570-0211-V10

pcs.

**Waxjet**

The affordable entry-level model.



**Technical specifications**

<b>Weight</b>	75 kg without stand
<b>Dimensions (L x W x H)</b>	770 x 620 x 400 mm (30.31" x 24.4" x 15.75")
<b>Dimensions of universal stand (L x W x H)</b>	750 x 480 x 510 mm (29.53" x 18.9" x 20")
<b>Working height with universal stand</b>	880 mm (34.65")
<b>Wax wheel - 1-9-0135</b>	Ø 155 x 350 mm
<b>Polishing wheel - 1-9-0135</b>	Ø 155 x 350 mm
<b>Nominal load</b>	3,3 kW
<b>Nominal voltage</b>	208 – 240 V, 50/60 Hz, 1 AC
<b>Rated current</b>	16 A
<b>Fuse protection min./max.</b>	16/20 A
<b>Waxjet - 7568-403-33</b>	
<b>Optional Stand - 7925-401</b>	

We reserve the right to make technical alterations.

4



**Waxjet 93, 208-240V/ 50 - 60 Hz**

7568-403-33

208 - 240 V, 50/60 Hz, 1 AC

pcs.



**Stand with Wheels for Waxjet 93**

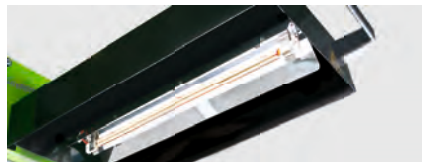
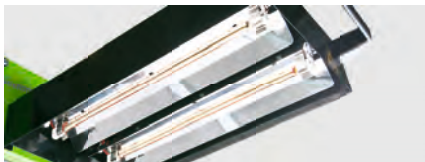
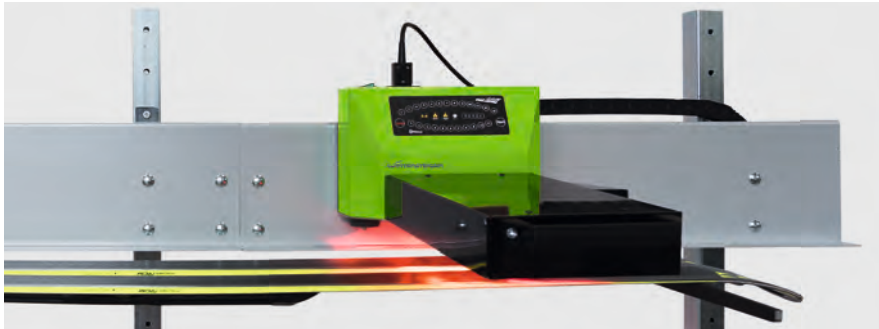
7925-401

75 x 48 x 51 cm (L x W x H)

pcs.

# Wax Future The Original.

The Wax Future is a World Cup tested waxing machine for snowboards, alpine and cross country skis. The Wax Future offers the highest level of „Racing“quality waxing results, using the latest in Infrared Technology. After the wax has been applied, the Wax Future penetrates the wax deeper into the base due to the infrared radiation – for perfect gliding properties over a long distance. There are 2 types to choose from: Wax Future Wall Speed with double and Wax Future with single infrared heating lamps. Both types are equipped with speed regulation and multiple programs to choose from. The WINTERSTEIGER Wax Future is built sturdy enough for daily use in any work shop and features a three year warranty!



**Wax Future Wall Speed.**

Double performance: With its two infrared heating lamps you can reach an output of up to 40 pairs/h. The double infrared lamp power leads to perfect results in no time. Specific programs for race waxing optimize the radiating intensity.

**Wax Future.**

Sturdy machine with one infrared heating lamp for the intense but gentle waxing in the Race and cross country section.

**Your benefits summed up:**

- Additional offer for you shop
- Increased wax absorption for constant gliding properties over a long distance
- Quick and easy to handle
- Modern, powerful operating panel
- Economical wax consumption
- Space saving wall mount
- Speed ramp for XC skis
- 3 year warranty

**Stand alone and flexible.**

An optional stand is available if there is not any wall space to mount the Wax Future. The stand includes a set of 3 metal feet and support arms. (Optional available: article number 55-115-553-1)



Easy handling

**Technical data**

	Wax Future 55-115-561	Wax Future Wall Speed 55-115-560
Number of infrared heating lamps	1	2
Dimension (H x W x D)	320 x 750 x 2500 mm (12.6 x 29.5 x 98.4")	
Ski length max.	2200 mm (86.6")	
Voltage	230 V 50/60 Hz	230 V 50/60 Hz
Current	7 A	14 A
External fuse protection	10/16 A	16/20 A
Performance up to	20 pairs/h	40 pairs/h

Subject to technical changes without prior notice.



**Wax Future**

55-115-561	230 V, 50/ 60 Hz , single lamp	pcs.
55-115-560	Wall Speed 230 V, 50/ 60 Hz	pcs.
55-115-553-1	Optional Stand	pcs.

## Speedbrush

Professional Roto Speedbrush for skis and snowboards.

The professional Roto Speedbrush gives skis and snowboards the perfect finish by removing excess wax from the structure and polishing the base. The Speedbrush features an variable speed motor with a quick and easily replaceable brush.



### Your benefits summed up:

- Variable speed
- Quick and easy brush change
- Optional stand



4

### Technical data

Speed (rpm)	140 – 1400
Polishing wheel	Ø 155 x 350 mm (55-642-041)
Dimensions (L x W x H)	<b>With stand</b> 710 x 500 x 985 – 1130 mm <b>Without stand</b> 710 x 255 x 300 mm
Working height with universal stand	880 mm – 1025 mm
Weight	28 kg without pedestal 60 kg with pedestal
Nominal load	0,75 kW
Nominal voltage	1 AC, 208 – 240 V, 50/60 Hz
Rated current	7,3 A
Fuse protection min./max.	10/16 A

We reserve the right to make technical alterations.



NEW

### Speedbrush 1x208-230V 50/60Hz

The professional Roto Speedbrush gives skis and snowboards the perfect finish by removing excess wax from the structure and polishing the base. The Speedbrush features an variable speed motor with a quick and easily replaceable brush.

7410-401-32      1 AC, 208 - 240 V, 50/60 Hz      pcs.

### Optional Stand for Speedbrush

7410-0311-V01      71 x 50 x 68,5-83 cm(LxWxH)      pcs.





**NEW**

### Spare Flange for Speedbrush

Suitable to all polishing/ texturing wheels Ø 155mm, W = 350 mm.

7410-0211-V02

pcs.



**NEW**

### Double Brush Ø 155mm, W = 350 mm

This double brush gives skis and snowboards the perfect finish by removing excess wax from the structure with the white part and polishing the base with the black part.

Speedbrush, Waxjet 80/90 SNB, Waxjet 91, Waxjet 93, Waxjet Pro/91/92

55-642-045

Double Brush

pcs.





# Baseman

Easier. Quicker. Cleaner.

Base repair machine for skis and snowboards.

The Baseman was developed with an ergonomic lightweight design for ease of work! It also brings many more benefits. The repair location is easier to see thanks to integrated LED lighting. The high-performance heating unit with electronic temperature control means that the machine is quickly ready for action.

Improved melting technology guarantees a high-quality and wear-resistant bond between the base and the repair material. The optimized melting head and material feed ensure uniform and thin material application. Perfect distribution of material shortens the melting time and reduces the time spent for subsequent work steps such as base grinding.



- Your benefits summed up:**
- High level of user convenience thanks to ergonomic lightweight design
  - Efficient downstream processing thanks to optimum melting results
  - Excellent cost-effectiveness thanks to frugal use of material and stand-by operation
  - Rapid heat-up time thanks to powerful heating unit
  - Best possible view of the repair location with integrated LED lighting
  - Easy replacement of the base repair material roll
  - Improved ambient air thanks to (optional) Smogjet exhaust air system

Melting head with larger contact surface, lower center of gravity and lighting for a better view of the melting area. Results: Tangibly improved control.



Melting head with larger contact surface



Consistent temperature control with status indicator



Practical stand with cleaning blade

Optional „Smogjet“ air extraction system for an improved work experience.



## Technical data

Baseman	
Nominal voltage	1 AC 100 – 240 V, 50/60Hz
Nominal load	0.63 kW
Nominal current	5.8/2.8 A
Fuse protection min./max.	10/13 A
Weight	1.8 kg (4 lbs)
Dimensions (L x W x H)	540 x 80 x 305 mm (without docking station)
Polyethylene material	Ø 3 mm, 250 g
Connection for extraction unit	Ø 30 mm
Noise emission max.	< 52 dB (A)
Smogjet	
Nominal voltage	1 AC 100 – 240 V, 50/60Hz
Nominal load	0.1 kW
Nominal current	0.9/0.43 A
Fuse protection min./max.	6.3 A
Weight	12 kg
Dimensions (L x W x H)	456 x 496 x 200 mm
Extraction capacity	100 m³/h
Noise emission max.	> 52 dB (A)

We reserve the right to make technical alterations.

# MACHINERY

## Base Repair Machine Baseman

### Base Repair Machine Baseman



#### Baseman 1 x 110 - 240V, 50/60Hz

7454-401-15	With Stand and Scraper	pcs.
-------------	------------------------	------



#### Spiral Cable Baseman 230V

Optionally, the Baseman device can be equipped with this spiral cable.

#### Baseman

7454-0412-V66	Spiral Cable 230 V+plug CEE	pcs.
---------------	-----------------------------	------

4

### Smogjet Air Filter System



**NEW**

#### Smogjet Air Filter

Comes with 1 pc. suction hose, 3 m long and 1 pc. filter set (1 main filter, 5 pre filter).

20-117-100	1 x 110 – 240 V, 50/60 Hz	pcs.
------------	---------------------------	------



#### Smogjet Suction Hose, L = 3 m, Ø = 32 mm

Optionally the Smogjet device can be used with 2 additional suction hoses.

20-117-105	L = 3 m, Ø = 32 mm	pcs.
------------	--------------------	------

#### Smogjet Spare Filter Set

20-117-120	1 main filter, 5 pre filter	pcs.
------------	-----------------------------	------



#### Docking Station Polyman

Optionally, each previously delivered Polyman device can be equipped with this stand to connect the air filter Smogjet. Including a scraper blade to clean the melting head.

#### Polyman

7453-5031-V03	With Scraper	pcs.
---------------	--------------	------





**NEW**

### Compressor SILENT 350/8/30 W

Effective output volume: 155 liter/min, suction volume: 350 liter/min, max. operating pressure: 8 bar, tank volume: 30 liter, noise-reduced design, air drying unit included, sound level 64 dB, 710 x 440 x 760 mm (L x W x H).

Omega RS 150, Omega RS 350, Sigma S/RS 200, Sigma S/RS 350, Trim 71, Trimjet

33-100-315

pcs.



**NEW**

### Air compressor MSM MINI 2,2 DX-200

Effective output volume: 240 liter/min, max. operating pressure: 10 bar, tank volume: 200 liter, noise-reduced design, air drying unit included, sound level 61 dB, 1420 x 580 x 1260 mm (L x W x H).

Basejet, Discovery 1, Omega RS 150, Scout, Sigma S/RS 200, Sigma S/RS 350, Trimjet, Trimjet 2, Tunejet

33-100-335

pcs.



### Screw-Type Compressor MSM Mini 5,5 DX-200

Effective output volume: 600 liter/min, max. operating pressure: 10 bar, tank volume: 200 liter, noise-reduced design, air drying unit included, sound level 64 dB, 1420 x 580 x 1260 mm (L x W x H).

Discovery 1, Discovery 2, Mercury, Omega RS 150, Omega RS 350, Scout, Sigma S/RS 200, Sigma S/RS 350, Trim 71, Tunejet

33-100-325

pcs.



### Screw-Type Compressor MSM Maxi 11 DF/270/10

Effective output volume: 1310 liter/min, max. operating pressure: 10 bar, tank volume: 270 liter, noise-reduced design, air drying unit included, sound level 68 dB, 1540 x 620 x 1340 mm (L x W x H).

Basejet, Discovery 1, Discovery 2, Discovery 2 with Finish Module, Mercury, Omega RS 150, Scout, Sigma S/RS 200, Sigma S/RS 350, Trimjet, Trimjet 2, Tunejet

33-100-355

pcs.



**NEW**

### Air drying unit MDX 600

Effective output volume: 600 liter/min, max. operating pressure: 16 bar, sound level 16 dB, 350 x 500 x 450 mm (L x W x H).

20-116-565

pcs.



### Oil for Screw-Type Compressor, 5 lt.

76-400-155

5 lt.

pcs.

## Hand Fork Lift Truck



### Jungheinrich Hand Fork Lift Truck AM22

The Jungheinrich AM 22 hand pallet truck with 2.200 kg load capacity is the ideal assistant for manual transporting over short distances. Easy to operate – comfortable for left and right-handed operators. The chassis length of just 373 mm allows for reliable and easy operation even in very confined spaces. The further improved hydraulic system reduces the pumping force required. The bushes on the wheels reduce the required drawbar pull. The chromed bushes on the wheels and joints ensure quiet running and an exceptional long lifetime. It is no longer necessary to lubricate connections; the AM22 continues to run as smoothly as ever. Maneuverability with one hand on the tiller is both comfortable and safe. The special lowering valve enables loads like the Automatic Service Station Scout to be lowered precisely or in small increments. Easy to operate controls – equally comfortable for left and right-handed operators. Manoeuvring with one hand on the tiller arm is both comfortable and safe. Optional fast lift (up to 120 kg) for lifting pallets clear of the floor with only three pump strokes. Short chassis length offers maximum maneuverability in restricted conditions. The Automatic Service Station Scout can be placed directly on the wall to save space in a workshop. Nevertheless, it will be necessary to remove the machine from the wall with a fork lift truck during maintenance or repairs. For this purpose, we offer this suitable pallet truck including a special lowering valve. 116,5 x 52 x 123 cm (L x W x H).

#### Scout

50-100-015	With lowering valve	pcs.
------------	---------------------	------

## Accessories for Base Repair Machines

5



### Polyethylene Wire 1,5 kg with Smell Lemon

This polyethylene wire with smell lemon contributes to a pleasant climate in workshops. Exclusively available at WINTERSTEIGER!

#### Basejet, Polyjet 80/100/120/130

55-560-150	Ø 3mm, 1,5 kg, clear, soft	pcs.
55-560-151	Ø 3mm, 1,5 kg, black, soft	pcs.
55-560-152	Ø 3mm, 1,5 kg, graphite, soft	pcs.



### Polyethylene Wire 0,25 kg with Smell Lemon

This polyethylene wire with smell lemon contributes to a pleasant climate in workshops. Exclusively available at WINTERSTEIGER!

#### Baseman

55-560-160	Ø 3 mm, 250 g, clear	pcs.
55-560-161	Ø 3 mm, 250 g, black	pcs.

### Polyethylene Wire 1,5 kg Standard

#### Basejet, Polyjet 80/100/120/130

55-560-106	Ø 3mm, 1,5 kg, clear, soft	pcs.
55-560-107	Ø 3mm, 1,5 kg, black, soft	pcs.
55-560-109	Ø 3 mm, 1,5 kg, graphite, soft	pcs.



# MACHINE ACCESSORIES

## Accessories for Base Repair Machines



### Polyethylene Wire 0,4 kg

#### Polyman

55-560-100	Ø=3mm, clear, hard	pcs.
55-560-104	Ø=3mm, clear, soft	pcs.
55-560-110	Ø=3mm, black, hard	pcs.
55-560-116	Ø=3mm, black, soft	pcs.
55-560-115	Ø=3mm, graphite, hard	pcs.



### Polyethylene Wire 1,5 kg for Skid Machines

#### Laser 30/40/50

56-601-035	Ø 3 mm, 1,5 kg, clear	pcs.
56-601-036	Ø 3 mm, 1,5 kg, black	pcs.
56-601-037	Ø 3 mm, 1,5 kg, graphite	pcs.

### Polyethylene Wire 0,25 kg for Skid Machines

#### Handy Laser, Miniskid 05/20/25/35

56-601-023	Ø 3 mm, 250 g, clear	pcs.
56-601-021	Ø 3 mm, 250 g, black	pcs.



### Polyethylene Wire 0,45 kg for Skid Machines

#### Miniskid 10, Skidmax

56-601-004	Ø 3 mm, 400 g, clear	pcs.
56-601-002	Ø 3 mm, 400 g, graphite	pcs.

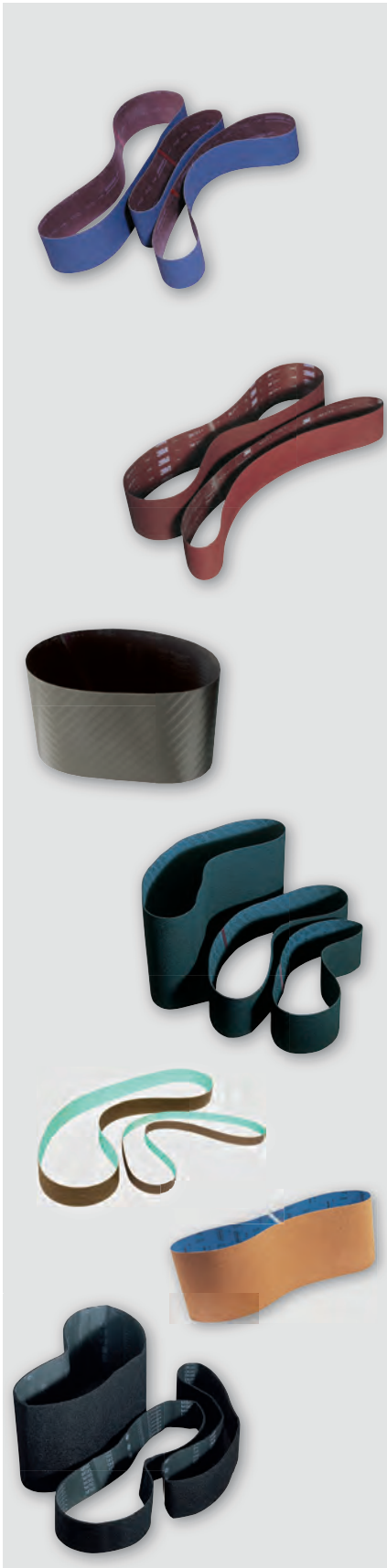


### Polyethylene Wire 3,5 kg for Montana Machines

#### Montana

55-560-340	Ø 5 mm, 3,5 kg, clear	pcs.
55-560-341	Ø 5 mm, 3,5 kg, black	pcs.

## Grinding Belts



### WINTERSTEIGER – Best Belt Quality

#### Blue Grinding Belt:

This zirconium corundum grinding belt has a very high quality and flexible return idler, as well as synthetic abrasive grain with controlled breaking behaviour. This breaking behaviour means that the abrasive grain repeatedly produces new grinding edges on the grain. The belt has a long lifetime and the grinding result is very good on the base, as well as on the edge (base and side edge). The belt needs to be slightly broken before first use. The last part of the item number corresponds to the belt grain: XX-XXX-080,-100,-120,-150,-180

**Tip:** Fast band speed increases the material removal.

**Caution:** Ensure adequate cooling.

#### Red Tuning Belt:

A mixed grain made up of ceramics and corundum makes this belt less aggressive than the blue grinding belt. Many tiny grain peaks provide a fine surface on the edge. A special backing film provides the tuning belt with a high tensile strength and reduced extension. The patented inlaid bonding film prevents oversize on the bonding point and results in an even grinding pattern without grinding marks. The edge is best polished and ground (tuned) in slight hanging position using a 40 Shore contact wheel. With that the grain touches only the base structure tips.

**Tip:** New tuning belts have to be broken more than base grinding belts. Fast belt speed and good cooling required.

#### Trizact™ Grinding Belt:

The pyramid shaped arrangement of the abrasive grain gives the Trizact grinding belt a longer lifetime and enables an even and fibre free result (structural grind), as well as very fine edge tuning. However the material removal is less than with the red tuning belt. This belt is ideal for snowboards, which, due to their shape (concave or convex), cannot be ground on the stone perfectly. The belt needs to be broken lightly before first use.

**Tip:** Only slight contact pressure and good cooling required.

#### Scotchbrite Belt (Waxing and Deburring Belt):

This belt is suitable for wet and dry operation and can be used for deburring, polishing and cold waxing (only dry process) in one work step. The belt has a low belt extension due to the reinforced nonwoven fibrous web and is particularly resistant to tearing and thus has an enormous lifetime. Caution: For dimensions 350 x 1300 mm and 350 x 2000 mm on machines with selfcentering idler wheel (from year of manufacture 2000), we recommend the use of a top quality belt type (with reinforced belt back).

**Tip:** Slow belt speed.

#### Moonflex Diamond Belt:

The special Moonflex grit enables an enormous lifetime of these side edge belts (more than 2000 pairs). Usage: grain 400 and 600 as tuning belt for very fine edge tuning, grain 060 and 120 as pregrinding belt for the discovery P-module.

#### Cork Finishing Belt:

For use after edge tuning. Fine hairs on the base are removed by using a lot of water, little pressure and low belt speed. A smooth and fibre free base is produced. This belt is mainly used for finishing and needs to be broken accordingly.

**Tip:** Slow belt speed.

#### Waxing and Polishing Belt:

These belts have a corundum or silicon carbide abrasive corn that is anchored solidly on a base made from elastic nylon fibres. This belt is mainly used for polishing after waxing.

**Tip:** Slow belt speed, low contact pressure.

# MACHINE ACCESSORIES

## Grinding Belts

### Side Edge Grinding Belts blue

Machine Type	Width	Length	Grit	Art.No.	Unit
Norton Grinding Belts					
<b>Micro 60</b>	22 mm	722 mm	80	56-095-080	pcs.
	22 mm	722 mm	100	56-095-100	pcs.
<b>GRINDRITE 21hundred, Microjet, PUN 350/350+, SEG (Omega,Sigma,Micro,SNB), Sigma B, Sigma Eco, Trim 40, Trim B, Universal 350/Combi</b>	20 mm	1200 mm	80	56-100-080	pcs.
	20 mm	1200 mm	100	56-100-100	pcs.
	20 mm	1200 mm	120	56-100-120	pcs.
	20 mm	1200 mm	220	56-100-220	pcs.
<b>MCR 800/1500</b>	20 mm	1500 mm	80	56-105-080	pcs.
	20 mm	1500 mm	100	56-105-100	pcs.
	20 mm	1500 mm	120	56-105-120	pcs.
<b>Discovery P (before 2008), Trim 100/120</b>	40 mm	1500 mm	80	56-106-080	pcs.
	40 mm	1500 mm	100	56-106-100	pcs.
<b>Discovery P (as of 2008)</b>	30 mm	1400 mm	80	56-107-080	pcs.
	30 mm	1400 mm	100	56-107-100	pcs.
	30 mm	1400 mm	120	56-107-120	pcs.

### Various Side Edge Grinding Belts

Machine Type	Width	Length	Art.No.	Unit
Tuning Belts				
<b>GRINDRITE 21hundred, Microjet, PUN 350/350+, SEG (Omega,Sigma,Micro,SNB), Sigma B, Sigma Eco, Trim 40, Trim B, Universal 350/Combi</b>	20 mm	1200 mm	56-150-020	pcs.
<b>MCR 800/1500</b>	20 mm	1500 mm	56-150-030	pcs.
<b>Discovery P (before 2008), Trim 100/120</b>	40 mm	1500 mm	56-150-040	pcs.
Scotchbrite Belts				
<b>GRINDRITE 21hundred, Microjet, PUN 350/350+, SEG (Omega,Sigma,Micro,SNB), Sigma B, Sigma Eco, Trim 40, Trim B, Universal 350/Combi</b>	20 mm	1200 mm	56-180-120	pcs.
<b>Discovery P (before 2008), Trim 100/120</b>	40 mm	1500 mm	56-180-180	pcs.
Diamond Belts				
<b>GRINDRITE 21hundred, Microjet, PUN 350/350+, SEG (Omega,Sigma,Micro,SNB), Sigma B, Sigma Eco, Trim 40, Trim B, Universal 350/Combi</b>	20 mm	1200 mm	56-101-400	pcs.
	20 mm	1200 mm	56-101-600	pcs.

### Norton Base Grinding Belts

Machine Type	Width	Length	Grit	Art.No.	Unit
<b>Micro 1/SB2, Micro PRO/ Center</b>	120 mm	2000 mm	80	56-108-080	pcs.
	120 mm	2000 mm	100	56-108-100	pcs.
	120 mm	2000 mm	120	56-108-120	pcs.

Norton Base Grinding Belts

Machine Type	Width	Length	Grit	Art.No.	Unit
Micro 60	150 mm	1300 mm	80	56-110-080	pcs.
	150 mm	1300 mm	100	56-110-100	pcs.
	150 mm	1300 mm	120	56-110-120	pcs.
Trim 100/120	150 mm	1500 mm	80	56-115-080	pcs.
	150 mm	1500 mm	100	56-115-100	pcs.
	150 mm	1500 mm	120	56-115-120	pcs.
MCR 800/1500, Micro 80/81/100	150 mm	2000 mm	80	56-120-080	pcs.
	150 mm	2000 mm	100	56-120-100	pcs.
	150 mm	2000 mm	120	56-120-120	pcs.
	150 mm	2000 mm	150	56-120-150	pcs.
Micro 71, SNB 60	350 mm	1300 mm	80	56-133-080	pcs.
	350 mm	1300 mm	100	56-133-100	pcs.
	350 mm	1300 mm	120	56-133-120	pcs.
GRINDRITE ST1800	320 mm	1500 mm	80	55-311-080	pcs.
	320 mm	1500 mm	100	55-311-100	pcs.
Discovery 2, Mercury, Omega B, Omega SBI	350 mm	1600 mm	80	56-137-080	pcs.
	350 mm	1600 mm	100	56-137-100	pcs.
	350 mm	1600 mm	120	56-137-120	pcs.
GRINDRITE 21hundred, GRINDRITE 61hundred, Micro 1/SB2, Micro 80/81/100, Micro 90/91, PUN 350/350+, Sigma B, Sigma Eco, Sigma SBI, SNB 80	350 mm	2000 mm	80	56-135-080	pcs.
	350 mm	2000 mm	100	56-135-100	pcs.
Micro 1/SB2, Micro 80/81/100, Micro 90/91, PUN 350/350+, Sigma B, Sigma Eco, Sigma SBI, SNB 80	350 mm	2000 mm	120	56-135-120	pcs.
Microjet, Tunejet	400 mm	1600 mm	80	56-136-080	pcs.
	400 mm	1600 mm	100	56-136-100	pcs.
	400 mm	1600 mm	120	56-136-120	pcs.
Discovery 1, Evolutiv 20/25, Evolutiv 40, PUN 350/350+, Universal 350/Combi	350 mm	1935 mm	80	56-560-080	pcs.
	350 mm	1935 mm	100	56-560-100	pcs.
	350 mm	1935 mm	120	56-560-120	pcs.

Base Grinding Belts Scotchbrite

Machine Type	Width	Length	Techn. Data	Art.No.	Unit
Micro 1/SB2, Micro PRO/Center	120 mm	2000 mm		56-180-300	pcs.
Trim 100/120	150 mm	150 mm		56-180-290	pcs.

# MACHINE ACCESSORIES

## Grinding Belts

### Base Grinding Belts Scotchbrite

Machine Type	Width	Length	Techn. Data	Art.No.	Unit
<b>MCR 800/1500, Micro 80/81/100</b>	150 mm	2000 mm		56-180-310	pcs.
<b>Micro 71, SNB 60</b>	350 mm	1300 mm	Standard quality	56-180-315	pcs.
	350 mm	1300 mm	Top quality	56-180-330	pcs.
<b>Discovery 2, Mercury, Omega B, Omega SBI</b>	350 mm	1600 mm	Top quality	56-180-365	pcs.
<b>Micro 1/SB2, Micro 80/81/100, Micro 90/91, PUN 350/350+, Sigma B, Sigma Eco, Sigma SBI, SNB 80</b>	350 mm	2000 mm	Standard quality	56-180-320	pcs.
	350 mm	2000 mm	Top quality	56-180-335	pcs.

### Various Base Grinding Belts

Machine Type	Width	Length	Art.No.	Unit
Tuning Belts				
<b>Micro 1/SB2, Micro PRO/Center</b>	120 mm	2000 mm	56-150-120	pcs.
<b>Trim 100/120</b>	150 mm	1500 mm	56-150-110	pcs.
<b>MCR 800/1500, Micro 80/81/100</b>	150 mm	2000 mm	56-150-150	pcs.
<b>Micro 71, SNB 60</b>	350 mm	1300 mm	56-150-340	pcs.
<b>Discovery 2, Mercury, Omega B, Omega SBI</b>	350 mm	1600 mm	56-150-160	pcs.
<b>Micro 1/SB2, Micro 80/81/100, Micro 90/91, PUN 350/350+, Sigma B, Sigma Eco, Sigma SBI, SNB 80</b>	350 mm	2000 mm	56-150-350	pcs.
<b>Microjet, Tunejet</b>	400 mm	1600 mm	56-150-400	pcs.
Trizact Belts				
<b>Micro 71, SNB 60</b>	350 mm	1300 mm	56-182-340	pcs.
<b>Discovery 2, Mercury, Omega B, Omega SBI</b>	350 mm	1600 mm	56-182-360	pcs.
<b>Micro 1/SB2, Micro 80/81/100, Micro 90/91, PUN 350/350+, Sigma B, Sigma Eco, Sigma SBI, SNB 80</b>	350 mm	2000 mm	56-182-350	pcs.
<b>Microjet, Tunejet</b>	400 mm	1600 mm	56-182-400	pcs.
<b>Discovery 1, Evolutiv 20/25, Evolutiv 40, PUN 350/350+, Universal 350/Combi</b>	350 mm	1935 mm	56-182-345	pcs.
Cork Finish Belts				
<b>MCR 800/1500, Micro 80/81/100</b>	150 mm	2000 mm	56-181-150	pcs.
<b>Micro 71, SNB 60</b>	350 mm	1300 mm	56-181-340	pcs.
<b>GRINDRITE ST1800</b>	320 mm	1500 mm	56-181-320	pcs.
<b>Discovery 2, Mercury, Omega B, Omega SBI</b>	350 mm	1600 mm	56-181-360	pcs.
<b>Micro 1/SB2, Micro 80/81/100, Micro 90/91, PUN 350/350+, Sigma B, Sigma Eco, Sigma SBI, SNB 80</b>	350 mm	2000 mm	56-181-350	pcs.
Waxing and Polishing Belts				
<b>Micro 1/SB2, Micro PRO/Center</b>	120 mm	2000 mm	56-180-390	pcs.
<b>Trim 100/120</b>	150 mm	1500 mm	56-180-395	pcs.
<b>MCR 800/1500, Micro 80/81/100</b>	150 mm	2000 mm	56-180-400	pcs.



Various Base Grinding Belts

Machine Type	Width	Length	Art.No.	Unit
Micro 71, SNB 60	350 mm	1300 mm	56-180-401	pcs.
Discovery 2, Mercury, Omega B, Omega SBI	350 mm	1600 mm	56-180-460	pcs.
GRINDRITE 21hundred, GRINDRITE 61hundred, Micro 1/SB2, Micro 80/81/100, Micro 90/91, PUN 350/350+, Sigma B, Sigma Eco, Sigma SBI, SNB 80, Universal 350/Combi	350 mm	2000 mm	56-180-402	pcs.



**Belt Dresser Stone 50 x 20 x 150 mm**

Make several passes across the entire width of the belt to break it in.

55-240-155      150 x 50 x 20 mm      pcs.

**Belt Dresser Stones for Machines**

Those dressing stones need to be applied at new grinding belts.

**Discovery P (before 2008)**

55-240-154      65 x 25 x 25 mm      pcs.

**Discovery 2, Mercury**

55-240-153      350 x 35 x 20 mm      pcs.

**Discovery P (as of 2008), Tunejet**

55-240-157      400 x 50 x 25 mm      pcs.



### Grinding Stones

## High Quality Grinding Stones by WINTERSTEIGER

During grinding stone manufacturing the components (the abrasive grain, the binder and the adhesive) are pressed at a very high pressure (> 100 tons) to form a homogeneous grinding stone, before they are fired for a week at a temperature of over 1000°C.

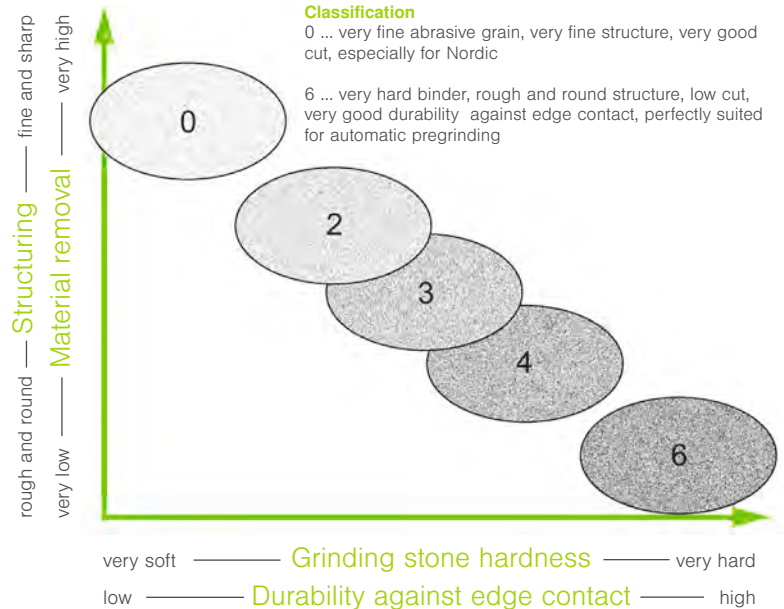
The components and the mixing ratio defines the specifications of the grinding stone and thus its characteristics:

#### Fine grain

- easily formable = precise structure
- many abrasive grains deployed at the same time
- softer binder = more aggressive grinding stone

#### Rough grain

- less easily formable = less structuring ability
- less abrasive grains carry out the grinding work
- a harder binder is required = less aggressive stone



Grinding stones are best classified by reference to their hardness.

The hardness of a grinding stone also reflects its major characteristics such as its cutting ability or durability against edge contact.

Machines	Art.No.	Color	Classification	Evaluation
Scout	8579-0221-V04	blue	4	Very good structuring, good material removal, however, also good durability against edge contact and low break out tendency, structure rounded, suitable for pregrinding, but also for structuring
	8579-0221-V01	brown	3	A grinding stone for good structuring (compared to the stone quality -V04, the -V01 enables a little finer structures), with good removal, very little grain break outs, medium hardness and medium edge stability. Also suitable for cross-country structures.
Omega SBI/350 Discovery 2 (as of 2012) Mercury	8570-0221-V04	blue	4	Very good structuring, good material removal, however, also good durability against edge contact and low break out tendency, structure rounded and less deep compared with e.g. 8570-0221-V02; suitable for pregrinding, but also for structuring
	8570-0221-V02	brown	3	Good structuring, good material removal, very low tendency to grain break out, medium hardness, and medium durability against edge contact (known as the „Shuttle Stone“); mainly suited for pregrinding, however, also for structuring
	8570-0221-V05	pink	2	In comparison to 8570-0221-V04, slightly finer and sharper structuring, however, slightly less material removal, very low tendency to grain break out; mainly suited for structuring
	8570-0221-V09	white yellow	3	Despite of a more porous appearance of the surface, this new specification (with more hollow space) allows an even finer and smoother structuring compared to 8570-0221-V05; very good durability against edge contact and very low tendency of grain break outs; because of more hollow space this grinding stone is somewhat diamond-friendly; preferably used for structuring, but is also suitable for pregrinding
Omega RS 150	8100-0221-V05	pink	2	Approved grinding stone wheel for very good, sharply cut structures and good material removal. Offers wide range of applications, but a lower durability against edge contacts. Compared to the other grinding stones for Race NC, this type has a coarser grain and is less applicable for very fine structures
	8100-0221-V06	grey brown	0	Medium hardness with very fine grain; optimal suitable for very fine structures (finer than -V74), low resistance against steel edges; this specification has proven itself for many years
	8100-0221-V74	blue	3	Medium hardness for sharp and fine structures
	8100-0221-V84	white	6	Hard quality for finest linear structures, rather low material removal; high resistance against steel edges
	8100-0221-V85	turquoise	4	Silicium-Carbide (SIKA)-Stone for very fine and deep structures at XC- and jump skis

Machines	Art.No.	Color	Classification	Evaluation
<b>Omega 150 Micro 80/81/100</b>	7600-0221-V01	pink	2	Tried and trusted grinding stone for very good, and sharply cut structures, very good cut, low durability against edge contact (especially for protruding edges) only recommended for manual machines
	7600-0221-V02	white	5	Very hard grinding stone with low material removal for medium structure quality; ideal for use in pregrinding; long stability time and service life
<b>Discovery (until 2012) Sigma 350 Sigma SBI Mirco 90/91</b>	7689-0221-V01	pink	2	Tried and trusted grinding stone for very good, and sharply cut structures, very good cut, low durability against edge contact (especially for protruding edges) only recommended for manual machines
	7689-0221-V02	brown	3	Good structuring, good material removal, very low tendency of grain break out, medium hardness, and medium durability against edge contact (known as the "Shuttle Stone"); mainly suited for pregrinding, however, also for structuring
	7689-0221-V04	blue	4	Very good structuring, good material removal, however, also good durability against edge contact and low break out tendency, structure rounded and less deep compared with e.g. 7689-0221-V02; suitable for pregrinding, but also for structuring
	7689-0221-V05	pink	2	In comparison to 7689-0221-V04, slightly finer and sharper structuring, however, slightly less material removal, very low tendency of grain break out; mainly suited for structuring
	7689-0221-V09	white yellow	3	Despite of a more porous appearance of the surface, this new specification (with more hollow space) allows an even finer and smoother structuring compared to 8570-0221-V05; very good durability against edge contact and very low tendency of grain break outs; because of more hollow space this grinding stone is somewhat diamond-friendly; preferably used for structuring, but is also suitable for pregrinding
<b>Micro NC</b>	8031-0211-V06	grey- brown	0	This grinding stone has a very fine grain; this means that very fine structures are possible (the diamond must match; for example use a 56-200-162 diamond). This results in a clean cut with medium material removal, low edge contact stability; thus perfect for use with cross-country and ski-jumping skis
	8031-0211-V05	pink	2	Tried and trusted grinding stone for very good, and sharply cut structures, wide range of applications; universal properties; very good material removal, tends towards low edge contact stability (especially for protruding edges), recommended for Alpine and cross-country skis
<b>Tunejet Microjet</b>	8700-0221-V11	red orange	2	Good structure, good material removal, combined with very good durability against edge contact (better than V14), structure slightly rounder and not so deep, universal use
	8700-0221-V14	blue	4	Tried and trusted grinding stone for very good, and sharply cut structures, very good material removal (higher than with V11 or V13, low durability against edge contact (especially with protruding edges); only recommended with oscillator
<b>Shuttle 3C Sigma 200</b>	8500-0221-V01	brown	3	Good structure, good material removal, very low tendency of grain break out, medium hardness and medium durability against edge contact (typically used on the Shuttle)
	8060-0221-V01	blue	4	Very good structure, medium material removal, however good durability against edge contact, structure slightly rounder and not as deep as with 8060-0221-V01, typically used with the Sigma; suitable for pregrinding and structuring
	8060-0221-V02	grey- brown	0	This grinding stone has a very fine grain; this means that very fine structures are possible (the diamond dressing tool must match, preferably with 56-200-162). This results in a clean cut with medium material removal, low durability against edge contact, thus perfect for use with Sigma for cross country and jumping skis and only for structuring
<b>Micro 71</b>	8028-0221-V01	pink	2	Tried and trusted grinding stone for very good, and sharply cut structures, very good material removal, risk of low durability against edge contact in case of protruding edges
	8028-0221-V02	brown	3	Good structuring, good material removal, low break out, medium hardness, and medium durability against edge contact; mainly suited for pregrinding, however, also for structuring; universal use
<b>Micro 1 / SB2</b>	7600-02211-V1	pink	2	Tried and trusted grinding stone for very good, and sharply cut structures, very good cut, low durability against edge contact (especially for protruding edges), only recommended for manual machines
<b>MCR 800/1500</b>	7230-02211-V4	pink	2	Tried and trusted grinding stone for very good, and sharply cut structures, very good cut, low durability against edge contact (especially for protruding edges) only recommended for manual machines

# MACHINE ACCESSORIES

## Grinding Stones



### High Quality Grinding Stones

Machine Type	Diameter	Width	Color	Quality	Techn. Data	Art.No.
Scout	300 mm	200 mm	blue	hard	For rounded structures	8579-0221-V04
	300 mm	200 mm	brown	medium		8579-0221-V01
Discovery 2, Mercury, Omega 350, Omega SBI	300 mm	350 mm	blue	hard	For rounded structures	8570-0221-V04
	300 mm	350 mm	whiteyellow	medium	For fine and smooth structures	8570-0221-V09
	300 mm	350 mm	pink	soft	For fine structures	8570-0221-V05
	300 mm	350 mm	brown	medium		8570-0221-V02
Discovery 1, Micro 90/91, Sigma 350, Sigma SBI	300 mm	350 mm	blue	hard	For rounded structures	7689-0221-V04
Discovery 1, Micro 90/91, Sigma S/RS 350, Sigma SBI	300 mm	350 mm	whiteyellow	medium	For fine and smooth structures	7689-0221-V09
Discovery 1, Micro 90/91, Sigma 350, Sigma SBI	300 mm	350 mm	pink	soft	For fine structures	7689-0221-V05
	300 mm	350 mm	brown	medium		7689-0221-V02
Micro 90/91, Sigma 350, Sigma SBI	300 mm	350 mm	pink	soft	F. accurate/precise structures	7689-0221-V01
Microjet, Tunejet	300 mm	400 mm	blue	hard	For rounded structures	8700-0221-V14
	300 mm	400 mm	orangered	soft	For very fine structures	8700-0221-V11
Shuttle 200, Shuttle 3C	300 mm	200 mm	brown	medium		8500-0221-V01
Micro 1/SB2, Micro 80/81/100, Omega S 150	350 mm	150 mm	white	very hard	Ø = 350 mm L = 150 mm	7600-0221-V02
	350 mm	150 mm	pink	soft	Ø = 350 mm L = 150 mm	7600-0221-V01
Micro 1/SB2, Micro PRO/Center	350 mm	120 mm	pink	soft		7600-02211-V1
Sigma S/RS 200	300 mm	200 mm	brown	soft	For fine structures at XC-skis	8060-0221-V02
	300 mm	200 mm	blue	hard		8060-0221-V01
GRINDRITE ST1800, GRINDRITE ST2000, Micro 71	250 mm	330 mm	brown	medium		8028-0221-V02
	250 mm	330 mm	pink	soft		8028-0221-V01
MCR 800/1500	350 mm	120 mm	pink	soft		7230-02211-V4

## Diamond Dressers

The dressing diamond is used to cut the desired structure into the grinding stone. Don't dress dry with synthetic diamonds → Risk of glowing out!  
(Glowing out: Diamond needles may splinter due to overheating)

### Square Diamond 56-200-169:

This synthetic diamond has five continuous, straight needles. The square configuration of the needles produces a rounder, less aggressive structure that lasts longer than the structure produced by rhomboid diamonds. WINTERSTEIGER recommends the 56-200-169 diamond as a standard diamond for all machines with wide grinding stones, however it is often used with narrow, harder stones.

**Advantage:** Long life time and good structure cutting characteristics.

### Square Diamond 56-200-169-P:

Same basic characteristics as 56-200-169. The synthetic diamond needles have been manufactured using a slower production process and this makes them slightly harder than the similar 56-200-169. This harder needle quality combined with a harder sinter material (supporter material) results in around 20 % longer life time and an even more consistent, deep structure on grinding stones with widths of 350 mm or more (not really suitable for narrow stones).

**Advantage:** Maximum life time and excellent structuring on wide grinding stones.

**Attention:** The-P-diamond needs more time to adjust to the stone shape upon installation compared to the standard diamond.

### Rhomboid Diamond 56-200-161-9:

This rhomboid diamond is a synthetic diamond with five continuous needles (no „needle grit“) with a needle length of 9 mm. These square needles are laid on edge (hence they are referred to as „rhomboid“) and produce more aggressive, pointed structures. The smaller needle cross-section allows fine, precise and consistent structure cuts to be produced. WINTERSTEIGER recommends the 56-200-161-9 diamond as a standard diamond for manual machines with a narrow grinding stone (up to 200 mm).

**Note:** To achieve a similar structure to the 56-200-169 diamond, the dressing speed should be reduced by around 11 %.

**Advantage:** Very precise and absolutely consistent structure cuts.

To get the perfect diamond set up for your needs, feel free to contact our experts from WINTERSTEIGER customer service.

## Synthetic Diamonds

Art.No.	56-200-169	56-200-169-P	56-200-161-9
Positioning of the diamond needles	square	square	rhomboid
Qty. of Needles x Needle Dimension	5 x 0.6 x 0.6 mm	5 x 0,6 x 0.6 mm Premium	5 x 0.5 x 0.5 mm
Scout	■	■	■
Discovery	■	■	■
Mercury	■	■	■
Tunejet, Microjet	■	■	■
Shuttle 200/3C	■	■	■
Race NC	■	■	■
Micro NC	■	■	■
Omega S , SBI / Sigma S, SBI	■	■	■
Omega RS, Sigma RS	■	■	■
MCR 800/1500	□	□	■
Micro 1/SB2	□	□	■
Micro 60/80/81/100	□	□	■
Micro 71/90/91	□	□	■



# MACHINE ACCESSORIES

## Diamond Dressers

### Rhomboid diamond 56-200-159:

This diamond is a synthetic diamond with five continuous needles. This diamond has the same needle size as the 56-200-169, but these are configured in a rhomboid pattern (for more aggressive, pointed structures). Similar scope of application to the 56-200-161-9, but not used as frequently.

**Note:** To achieve a similar structure to the 56-200-169 diamond, the dressing speed should be increased by around 11 %.

**Advantage:** Good structure-cutting characteristics.

### Square Diamond 56-200-168:

Synthetic diamond with five continuous needles. Compared to the 56-200-169 diamond, the needle cross-section is 0.1 mm greater, giving good pregrinding characteristics and a longer life time. Due to the greater needle cross-section, the structure pattern is slightly rougher than with the 56-200-169 diamond. WINTERSTEIGER recommends the 56-200-168 diamond as a pregrinding diamond for automated machines with several grinding stones.

**Note:** To achieve a similar structure to the 56-200-169 diamond, the dressing speed should be increased by around 17 %.

**Advantage:** Smooth structures, good material removal and long life time.

### Square diamond 56-200-163:

This diamond with 3 needles is primarily used for special structures. It has wider, square-shaped needles that are aligned straight to enable very wide structures with a high planar surface percentage and low groove percentage to be produced on the skis at a higher dressing speed and lower dressing rpm (used for ski jumping).

**Note:** Very high dressing speeds required.

**Advantage:** Gives the longest life time of all diamonds.

### Rhomboid diamond 56-200-162:

This diamond with 3 needles is mainly used for cross-country skiing applications where very fine, precise structures are required. The needles in this synthetic diamond are laid on edge and have a low contact length.

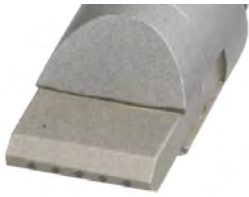
Due to the low bearing surface, this diamond is used for low plunging depths mainly with soft stones.

**Advantage:** The ultimate in fine, precise structures.

**More special diamonds are available on request.**

5

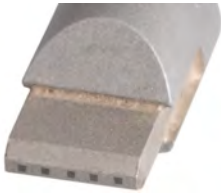
Art.No.	56-200-159	56-200-168	56-200-163	56-200-162	
Positioning of the diamond needles	rhomboid	square	square	rhomboid	
Qty. of Needles x Needle Dimension	5 x 0.6 x 0.6 mm	5 x 0.7 x 0.7 mm	3 x 1.0 x 1.0 mm	3 x 0.4 x 0.4 mm	
				Alpine	Nordic
Scout	■	□	□		
Discovery	■	■	□		
Mercury	■	■	□		
Tunejet, Microjet	■	□	□		
Shuttle 200/3C	■	□		□	■
Race NC	■			□	■
Micro NC	■			□	■
Omega S , SBI / Sigma S, SBI	■	□	□	□ only for width 150/200 mm	■ only for width 150/200 mm
Omega RS, Sigma RS	■	□		□ only for width 150/200 mm	■ only for width 150/200 mm
MCR 800/1500	□	□		□	■
Micro 1/SB2	□	□		□	■
Micro 60/80/81/100	□	□		□	■
Micro 71/90/91	□	□		□	■



**Rhomboid Diamond 5 x 0,5 x 0,5 mm, L = 9mm**

Discovery 1, Discovery 2, MCR 800/1500, Mercury, Micro 1/SB2, Micro 60, Micro 71, Micro 80/81/100, Micro 90/91, Micro NC, Microjet, Omega RS 150, Omega S 150, Omega S 350, Omega SBI, Race NC, Scout, Shuttle 200, Shuttle 3C, Sigma S/RS 200, Sigma S/RS 350, Sigma SBI

56-200-161-9      5 x 0,5 x 0,5 mm      pcs.



**Square Diamond 5 x 0,6 x 0,6 mm Premium**

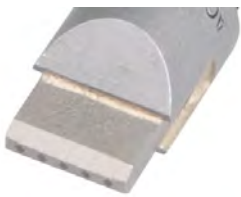
Discovery 1, Discovery 2, MCR 800/1500, Micro 1/SB2, Micro 71, Micro 80/81/100, Micro 90/91, Micro NC, Microjet, Omega RS 150, Omega RS 350, Omega S 150, Omega S 350, Omega SBI, Race NC, Scout, Shuttle 200, Shuttle 3C, Sigma S/RS 200, Sigma S/RS 350, Sigma SBI, Tunejet

56-200-169-P      5 x 0,6 x 0,6 mm Premium      pcs.

**Square Diamond 5 x 0,6 x 0,6 mm**

Discovery 1, Discovery 2, MCR 800/1500, Mercury, Micro 1/SB2, Micro 71, Micro 80/81/100, Micro 90/91, Micro NC, Microjet, Omega RS 150, Omega RS 350, Omega S 150, Omega S 350, Omega SBI, Race NC, Scout, Shuttle 200, Shuttle 3C, Sigma B, Sigma S/RS 200, Sigma S/RS 350, Sigma SBI, Tunejet

56-200-169      5 x 0,6 x 0,6 mm      pcs.



**Rhomboid Diamond 5 x 0,6 x 0,6 mm**

Discovery 1, Discovery 2, MCR 800/1500, Mercury, Micro 1/SB2, Micro 71, Micro 80/81/100, Micro 90/91, Micro NC, Microjet, Omega RS 150, Omega S 150, Omega S 350, Omega SBI, Race NC, Scout, Shuttle 200, Shuttle 3C, Sigma B, Sigma S/RS 200, Sigma S/RS 350, Sigma SBI, Tunejet

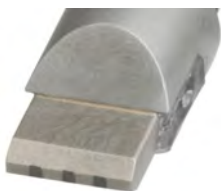
56-200-159      5 x 0,6 x 0,6 mm      pcs.



**Square Diamond 5 x 0,7 x 0,7 mm**

Discovery 1, Discovery 2, MCR 800/1500, Mercury, Micro 1/SB2, Micro 71, Micro 80/81/100, Micro 90/91, Micro NC, Microjet, Omega RS 150, Omega S 150, Omega S 350, Omega SBI, Race NC, Shuttle 200, Shuttle 3C, Sigma S/RS 200, Sigma S/RS 350, Sigma SBI, Tunejet

56-200-168      5 x 0,7 x 0,7 mm      pcs.



**Square Diamond 3x1,0x1,0mm**

Discovery 1, Discovery 2, Mercury, Micro 71, Microjet, Omega S 350, Omega SBI, Shuttle 200, Shuttle 3C, Sigma S/RS 350, Sigma SBI, Tunejet

56-200-163      3 x 1,0 x 1,0 mm      pcs.



**Rhomboid Diamond 3 x 0,4 x 0,4 mm**

Micro NC, Omega RS 150, Omega S 150, Race NC, Sigma S/RS 200

56-200-162      3 x 0,4 x 0,4 mm      pcs.

## Racing Accessories

# Accessories for Race NC, Omega RS and Sigma RS You can make the race!

## Race Service Stone Grinding Machines for Alpine, Cross-Country and Jump Skis.

The race service stone grinding machines prove once again WINTER-STEIGER's commitment to market and technology leadership. They offer a full set of features for both alpine and nordic skiing.

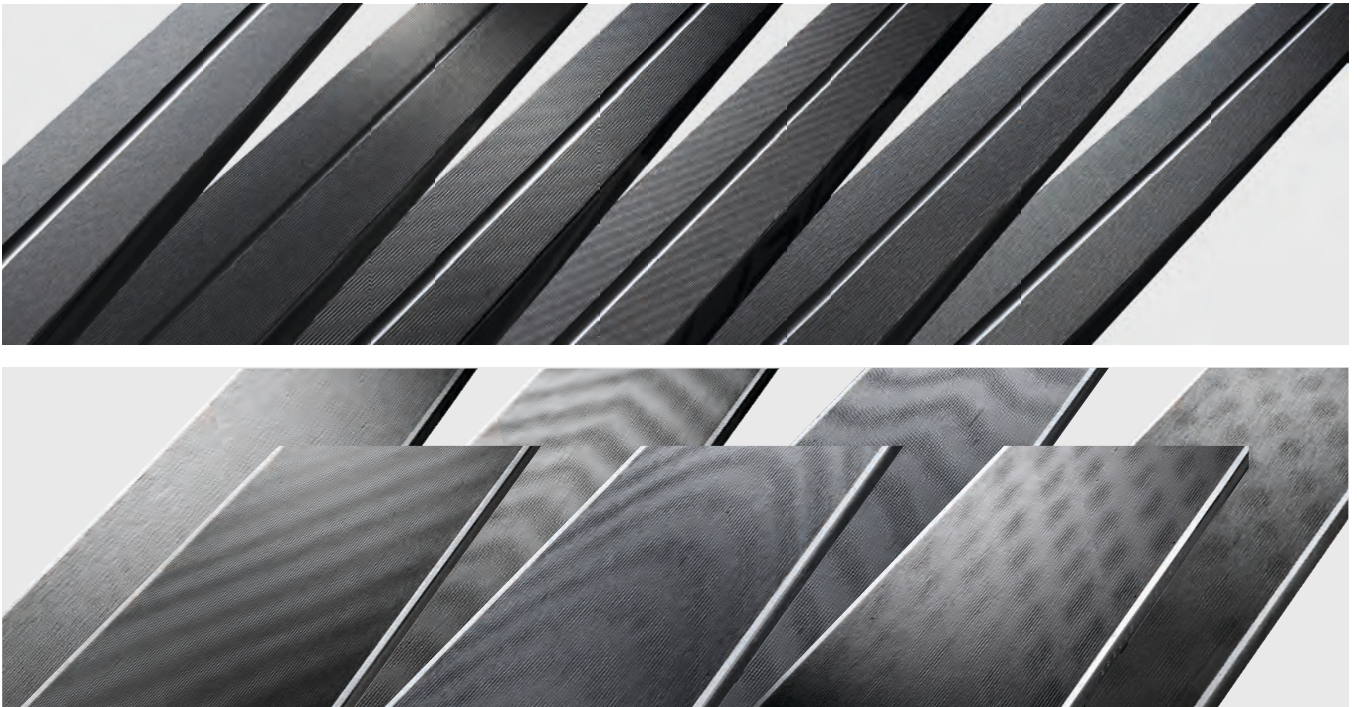
### Unbeatable variety of structures.

On the following pages you will find a huge selection of dressing diamonds and grinding stones for race service. Therefore, offering an unbeatable variety of structures.

### Dressing diamonds for individual structure patterns.

The structure pattern depends on the diameter and arrangement and number of the diamond needles. The finer the needles, the finer the structure; the larger the needles, the coarser the structure. A rhomboid needle arrangement will produce sharper and more aggressive structures, whereas a square needle arrangement will produce smoother structures with a larger distance between the structure rows (= larger contact area). This is because the diamonds have different degrees of wear when the grinding stone is being dressed.

5



## Omega RS

### For all service professionals and racing specialists.

The Omega RS allows you to set your sights on the highest race grinding standards. After all, its development was inspired by the Race NC.

### Your benefits summed up:

- Professional stone grinding at an entry-level price
- Ergonomic, rugged and compact design
- Touchscreen display with „Easy Go“ quick selection buttons
- Easy to operate
- Easy handling through supported feed lift options
- Optimum support for cross country skis
- Customizable to suit your individual needs
- Centering unit for custom racing structures



## Grinding Stones Racing

### Grinding Stones for Race NC

Machine Type	Diameter	Width	Color	Quality	Techn. Data	Art.No.
<b>Race NC</b>	350 mm	70 mm	blue	medium	For precise, fine structures	56-200-361
	350 mm	70 mm	turquoise	medium	For fine, deep structures	56-200-362
	350 mm	70 mm	greybrown	medium	For very fine structures	56-200-363
	350 mm	70 mm	white	hard	For finest linear structures	56-200-364
	350 mm	70 mm	pink	soft	For large surface roughness	56-200-365
	350 mm	70 mm	white	soft	For finest accurate structures	56-200-367
	350 mm	150 mm	blue	medium	For precise, fine structures	56-200-371
	350 mm	150 mm	turquoise	medium	For fine, deep structures	56-200-372
	350 mm	150 mm	greybrown	medium	For very fine structures	56-200-373
	350 mm	150 mm	white	hard	For finest linear structures	56-200-374
	350 mm	150 mm	pink	soft	For large surface roughness	56-200-375

### Grinding Stones for Omega RS 150 / Race NC

Machine Type	Diameter	Width	Color	Quality	Techn. Data	Art.No.
<b>Omega RS 150</b>	350 mm	150 mm	pink	soft	For large surface roughness	8100-0221-V05
	350 mm	150 mm	greybrown	medium	For very fine structures	8100-0221-V06
	350 mm	150 mm	blue	medium	For precise, fine structures	8100-0221-V74
	350 mm	150 mm	white	hard	For finest linear structures	8100-0221-V84
	350 mm	150 mm	turquoise	medium	For fine, deep structures	8100-0221-V85
<b>Micro NC</b>	350 mm	150 mm	greybrown	medium	For very fine structures	8031-0211-V06
	350 mm	150 mm	pink	soft	For fine structures at XC-skis	8031-0211-V05

# MACHINE ACCESSORIES

## Alpine Diamond Dressers f.RaceNC/ OmegaRS/ SigmaRS

### Alpine Diamond Dressers f.RaceNC/ OmegaRS/ SigmaRS



NEW

#### Rhomboïd Diamond 8 x 0,4 x 0,4 mm

This rhomboïd diamond is a synthetic diamond with five continuous needles. These square needles are laid on edge (hence they are referred to as "rhomboïd") and produce more aggressive, pointed structures. The smaller needle cross-section is compensated for by the 8 needles and enables very fine, precise and consistent structure cuts to be produced. The 56-200-086 diamond is increasingly being used on manual machines with a narrow grinding stone (up to 200 mm) for downhill racing skis.

**Discovery 2, Mercury, Micro NC, Omega RS 150, Omega RS 350, Race NC, Sigma RS 200, Sigma RS 350**

56-200-086      8 x 0,4 x 4,0 mm      pcs.



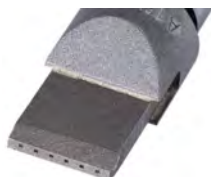
NEW

#### Rectangular Diamond 1 x 0,5 x 4,0 mm

On this flat diamond the synthetic diamond plate is set higher and is pointed. Plate diamonds are very wear-resistant due to their high contact surface. The pointed diamond plate means this diamond simulates the action of a rhomboïd diamond. This diamond is mainly used for linear structures on downhill skis.

**Discovery 2, Mercury, Micro NC, Omega RS 150, Omega RS 350, Race NC, Sigma RS 200, Sigma RS 350**

56-200-079      1 x 0,5 x 4,0 mm      pcs.



#### Rhomboïd Diamond 6 x 0,4 x 0,4 mm

The 6 fine needles on this diamond produce fine and precise structures. Its medium size means this diamond is used for fine structures on downhill skis, and is widely used for cross-country skiing applications.

**Micro NC, Omega RS 150, Race NC, Sigma RS 200**

56-200-177      6 x 0,4 x 0,4 mm      pcs.

### Nordic Diamond Dressers f.RaceNC/ OmegaRS/ SigmaRS

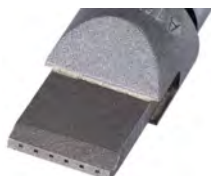


#### Rectangular Diamond 1 x 0,4 x 2,0 mm

Due to the rectangular diamond plate, this diamond has a higher bearing surface than the 56-200-162. This means it can also be used with harder grinding stones and for deeper structures.

**Micro NC, Omega RS 150, Race NC, Sigma RS 200**

56-200-090      1 x 0,4 x 2,0 mm      pcs.

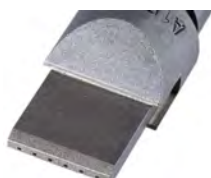


#### Rhomboïd Diamond 6 x 0,4 x 0,4 mm

The 6 fine needles on this diamond produce fine and precise structures. Its medium size means this diamond is used for fine structures on downhill skis, and is widely used for cross-country skiing applications.

**Micro NC, Omega RS 150, Race NC, Sigma RS 200**

56-200-177      6 x 0,4 x 0,4 mm      pcs.



NEW

#### Square Diamond 6 x 0,3 x 0,3 mm

With 6 extra fine needles, this diamond creates very fine XC-structures, finer than the diamond 56-200-162. Despite the fine needles, this diamond has a similar life time like the diamond 56-200-162 due to the double quantity of needles.

**Micro NC, Omega RS 150, Race NC, Sigma RS 200**

56-200-095      6 x 0,3 x 0,3 mm      pcs.





NEW

**Rectangular Diamond 2 x 0,3 x 1,5 mm**

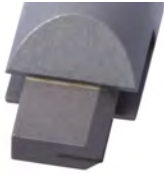
Plate diamond for very fine cross-country structures. The two plates arranged one behind the other give this diamond a high contact surface, making it more stable compared to the 56-200-095.

**Micro NC, Omega RS 150, Race NC, Sigma RS 200**

56-200-065

2 x 0,3 x 1,5 mm

pcs.



NEW

**Rectangular Diamond 1 x 0,3 x 4,0 mm**

On this flat diamond the synthetic diamond plate is set higher and is pointed. Plate diamonds are very wear-resistant due to their high contact surface. The pointed diamond plate means this diamond simulates the action of a rhomboid diamond. This diamond is used for linear structures in cross-country skiing applications.

**Micro NC, Omega RS 150, Race NC, Sigma RS 200**

56-200-078

1 x 0,3 x 4,0 mm

pcs.



WINTERSTEIGER special: The Ceramic Disc Finish



Disc technology has caught on. 90 % of all skis in ski production are tuned using disc technology. WINTERSTEIGER works constantly on further development of this tried and tested technology in the servicing sector.

**Advantages for the sports retailer:**

- Precise edge geometry
- Precise edge angles along the whole length of the ski or board
- Fine, smooth edge surface
- Always sharp grinding discs

**Advantages for the rental shop:**

- Frequent grinding possible thanks to low abrasion
- Long lifespan of rental skis
- No need to change belts
- Long lifespan of disc

**Advantages for the end user:**

- Improved turning qualities = more fun and faster learning results
- Better grip on hard slopes = increased safety
- Edges remain sharper for a longer period of time
- Easier turning on the edge = Carving

**The following machines are equipped with Ceramic Disc Finish:**

Scout, Mercury, Discovery, Tunejet, Shuttle, Trimjet, Microjet Disc, Trim Disc 91, Trim Disc 71, Trim NC

With the Ceramic Discs 56-220-046, 56-220-048, 56-220-052, 56-220-053, 56-220-054, 56-220-060, 56-220-091 and 56-220-092 WINTERSTEIGER offers very fine balanced discs (each single disc is electronically balanced). These discs prevent vibrations and secure a high quality tune.

**Ceramic Discs without Flange**

Machine Type	Diameter	Width	Techn. Data	Art.No.	Unit
Discovery 2, Mercury, Scout, Trimjet	154 mm	40 mm	medium	56-220-054	pair
Discovery 1, Discovery 2, Mercury	154 mm	40 mm	medium	56-220-052	pair
Discovery 2, Mercury	154 mm	40 mm	hard	56-220-053	pair
Discovery 1, Discovery 2, Scout	150 mm	40 mm	medium	56-220-046	pair

Ceramic Discs without Flange

Machine Type	Diameter	Width	Techn. Data	Art.No.	Unit
Shuttle 200, Shuttle 3C, Trim 90/91, Trimjet	154 mm	40 mm	universal	56-220-048	pair
Trim 71	154 mm	40 mm	soft	56-220-060	pcs.
Tunejet	185 mm	42 mm	soft	56-220-091	pair
	185 mm	42 mm	medium	56-220-092	pair
Microjet	175 mm	40 mm	universal	56-220-070	pair



**Mounting Screws**

For ceramic discs with disc machines.

**Shuttle 200, Shuttle 3C, Trim 71, Trim 90/91**

02-195-230 screw M5x30(6pcs./machine) pcs.

**Discovery 1, Discovery 2, Mercury, Trimjet**

02-195-225 screw M5x25(6pcs./machine) pcs.



NEW

**Multigrain Diamond  $\varnothing = 15$  mm, Trimjet 2**

Doublesided diamond bit to clean the ceramic discs at Trimjet 2 with central support. 2 pcs. needed per machine.

**Trimjet 2**

56-200-146  $\varnothing 15$  mm pcs.



**Sidewall Planer ERGO RAZOR**

To remove sidewall material. The ERGO RAZOR sidewall planer is essential to prep for side edge filing as it is common for a file to be compromised by cutting into the sidewall of a ski. It is very important to remove the sidewall material to avoid loading files with plastic and to keep the sidewall from interfering with the bevel on the edge. The razor has an ergonomic design that fits into the palm of the hand. It is adjustable and can be used with both the right and left hands. It comes with a round cutting blade (packaged for retail).

57-401-100 pcs.



**Squared Spare Blade for Side Wall Planer**

Suitable to the ERGO RAZOR sidewall planer.

55-500-088 pcs.

# MACHINE ACCESSORIES

## WINTERSTEIGER special: The Ceramic Disc Finish



### Round Spare Blade for Side Wall Planer

Suitable to the ERGO RAZOR sidewall planer.

55-500-089

pcs.



### Polishing Discs for Polishing Module

To polish the tip and tail areas for an optically perfect base edge.

#### Discovery 2, Mercury

56-200-504

Ø 250 mm, W = 50 mm, soft

pair

56-200-505

Ø 250 mm, W = 50 mm, hard

pair



### Square Diamond 1 x 1,0 x 1,0 mm

For dressing the polishing discs. Allows a little more material removal with the polishing discs compared to the diamond bit 56-200-152.

#### Discovery 2, Mercury

56-200-175

1 x 1,0 x 1,0 mm

pcs.



### Multigrain Diamond L=10 mm

For dressing the polishing discs. Ensures an increased polishing effect (even finer edge surface) compared to the type 56-200-175.

#### Discovery 2, Mercury

56-200-152

W = 10 mm

pcs.

## Dynamic Bridge

Carbon binding bridge: super light, takes care of your back.

Weighting in at only a few grams, the Dynamic Bridge weighs less than half that of a conventional binding bridge. This means less wear and tear on your shoulders and back. Compared to using conventional bridges, you lift one or two tons less per day (calculation based on 6 passes per single ski, considering 30 – 50 pairs of skis).

### Complete product range.

The complete product range with 5 models – three sizes for alpine ski, one model for cross-country and one for racing skis used with a binding plate – makes the Dynamic Bridge a universal tool: Bridges suitable for every kind of ski.

#### Your benefits summed up:

- Light weight makes work easier
- Quick and extremely simple to handle
- Continuous contact pressure for precise grinding results
- High stability of the binding bridge at the ski thanks to large contact surface



#### Adult skis (Art.No.: 56-190-200)

For skis with a minimum length of 145 cm.

Weight: 860 g



#### Medium (Art.No.: 56-190-280)

For skis with a minimum length of 110 cm.

Weight: 665 g



#### Child skis (Art.No.: 56-190-220)

For skis with a minimum length of 90 cm.

Weight: 590 g



#### Race (Art.No.: 56-190-290)

For racing skis without mounted ski binding. Suitable for every binding plate with rubber cushion and velcro strip fixation.

Weight: 650 g



#### XC (Art.No.: 56-190-240)

For cross-country skis. Easy fixation of the bridge at the binding.

Weight: 410 g



# MACHINE ACCESSORIES

## Binding Bridges

### Binding Bridges



#### Binding Bridge Carbon universal, super light

Extremely light binding bridge with 860 g weight to use without dummy sole. Suitable for alpine and telemark skis with a minimum length of approx. 145 cm.

56-190-200

L = 1330 mm

pcs.



#### Binding Bridge Carbon Medium, super light

Extremely light binding bridge with a weight of only 665 g. For medium skis with a minimum length of approx. 110 cm.

56-190-280

L = 1070 mm

pcs.



#### Carbon Binding Bridge f. Children Skis, super light

Extremely light binding bridge with a weight of only 590 g. For junior skis with a minimum length of approx. 90 cm.

56-190-220

L = 930 mm

pcs.



#### Binding Bridge Carbon Race, super light

For racing skis without mounted ski binding. Suitable for every binding plate with rubber cushion and velcro strip fixation.

56-190-290

L = 1200 mm

pcs.



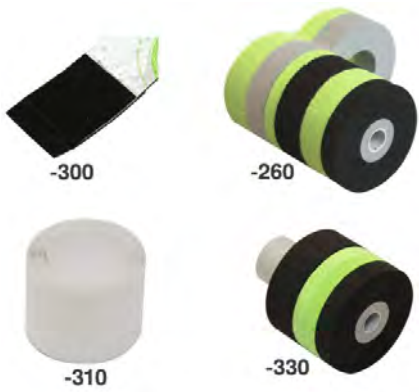
#### XC Bridge Carbon, super light

Extremely light weighted binding bridge with 410 g weight, with metal bar to attach to the binding.

56-190-240

L = 1060 mm

pcs.



**Accessories for Carbon Binding Bridges**

56-190-260	Spare Central Support	pcs.
56-190-330	Spare Pin and Washers	pcs.
56-190-310	Spare Non Slip Tape L = 3 m	pcs.
56-190-300	Rubber Wedges (2 pcs.)	pair



**Binding Bridge Alu, universal, super light**

ALU binding bridge to use without dummy sole for manual machines. Suitable for alpine and telemark skis with a minimum length of approx. 130 cm.

7220-0111-V01	L = 1140 mm	pcs.
---------------	-------------	------



**Adaptor/ Non Slip Tape for Alu Binding Bridge**

56-190-130	W = 80 mm, closed	pcs.
56-190-125	W = 80 mm, w.rounded groove	pcs.
56-190-135	W = 120 mm, closed	pcs.
56-126-218	Non Slip Tape, L = 936 mm	pcs.



**Binding Bridge with Hinge**

7217-4111-V01	Binding Bridge L = 1200 mm	pcs.
---------------	----------------------------	------



**Spare Hinge with adjustable height**

Adjustable height, for binding bridge with hinge (7217-0111-V01).

64-140-437	Spare Hinge L=120 mm	pcs.
------------	----------------------	------

# MACHINE ACCESSORIES

## Binding Bridges



### Spare Adaptor for binding bridge 7217-4111-V01

56-190-110 Spare Adaptor W=59 mm pcs.

### Spare Non-Slip Tape L=1070 mm for binding bridge 7217-4111-V01

Pour pont alpin (7217-0111-v01).

56-126-210 Spare Non-Slip Tape L=1070 mm pcs.



### Bridge Adaptor Salomon Pilot, Pro Link for binding bridge 7217-4111-V01

7217-0111-V05 Bridge Adaptor Salomon, 2 pcs. pk.



### Binding Bridge for Extreme Carver Skis

Binding bridge height adjustable for extreme carver skis.

7219-4011-V02 L = 1044 mm pcs.

### Spare Non-Slip Tape L = 943 mm for Extreme Carver Bridge

For binding bridge for carving skis (7219-4011-V02).

56-126-217 L = 943 mm pcs.

### Spare Hinge for Extreme Carver Bridge

Adjustable height, for binding bridge for carving skis (7219-4011-V02).

7219-4012-001 L = 100 mm pcs.



### Binding Bridge for Children Skis

For child skis with a minimum length of approx. 90 cm, vertically adjustable.

7228-0111-V12 L = 848 mm pair

### Spare Non-Slip Tape L = 922 mm

For junior bridge 7228-0111-V10, as from July 2005.

56-126-216 L = 922 mm pcs.



### Binding Bridge Alu for XC-skis

With metal bar to fix on the binding.

7226-07 L = 705 mm pcs.

### Spare Non-Slip Tape L = 716 mm for XC-bridge 7226-07

For binding bridge for cross-country skis (7226-07).

56-126-219 L = 716 mm pcs.



**Binding Bridge Stand 1680 x 680 x 350 mm**

7340-401                      1680 x 680 x 350 mm                      pcs.

**Moveable Rack for Binding Bridge Stand**

For Bridge Stand (7340-01) with free rolling wheels.

7340-4111-V01                      748 x 479 x 100 mm                      pcs.



**Dummy Soles, grey, 1 pair**

For Boot Sole length 240 - 360 mm.

7219-42111-V1                      pair



**Dummy Sole for Touring Bindings, 1 pair**

Also suitable for Dynafit touring bindings.

7219-42111-V2                      pair



**Adaptor for Rotary Plate Bindings**

To mount on the dummy soles and to use only in combination with the binding bridge for carving skis (7219-4011-V02).

7219-02111-001                      pcs.



**Dummy Soles for Children Skis (1 pair)**

For boot sole length 200 - 290 mm

7228-02111-V1                      pair



**Bridge Adaptor for MARKER Freeride Bindings**

In combination with the binding bridge for extreme carvers (7219-4011- V02) this adaptor can be mounted under the dummy sole and reduces the angle as well as the height of the heel area of the binding.

7219-02111-V01                      pcs.

# MACHINE ACCESSORIES

## Health Care

### Health Care



#### Working Gloves Gladiator, size 10

Wrinkle pre-shrunked, cut-proof and an excellent wet-grip, water tight, cotton lining.

55-500-027	Size 10	pair
------------	---------	------



#### Working Gloves Powerflex

Extreme resistance to cuts, splinters and burrs. The PowerFlex® glove protects the wearer with a triple-layer construction that comprises steel, glass fiber and Kevlar®. The glove exceeds EN388 cut level 5. Extra-long cuff offers extended safety for the forearm. Natural rubber crinkle finish provides a firm grip. Partial water protection in the front area of the glove. Excellent washability, with no decrease in comfort or fading.

55-500-260	Size 8	pair
55-500-261	Size 9	pair
55-500-262	Size 10	pair



#### Protective Goggles Uvex superfit

The UVEX super fit glasses are ultra light safety glasses (only 21 grams) with hinged side arms, an innovative design concept and sporty dynamics. They combine the features of advanced UVEX safety eyewear with the benefits of leading-edge material technology. The extra slim wrap-around lenses with a 6.5 base curve provide outstanding protection against mechanical hazards.

57-100-390	White/ green	pcs.
------------	--------------	------

### Wearing Parts



#### Panel Keys

##### Keys for Aggregate Housings

70-150-110	For various aggregate housings	pcs.
43-195-352	For Omega panels	pcs.

##### Panel Key T-End

70-150-100	For electro-panels	pcs.
------------	--------------------	------





### Spray Gun with Tube

#### Trim 71, Trimjet

8050-0811-V05 L=2 m, cleaning tube+spray gun pcs.

#### Micro 71, Micro 80/81/100, Omega B, Omega RS 150, Omega S 150, Omega S 350, Omega SBI, Sigma B, Sigma S/RS 200, Sigma S/RS 350, Sigma SBI, Trim 90/91

8050-0521-V04 L=3 m, spiral tube+spray gun pcs.

#### Discovery 1, Discovery 2, Mercury, Microjet, Scout, Shuttle 200, Shuttle 3C, Tunejet

8550-0811-V05 L=6 m, spiral tube+spray gun pcs.

8550-0811-U05 Spare Spray Gun pcs.



### Air Pistol with Hose

#### Mercury, Scout

37-500-417 Air pistol+high perform.nozzle pcs.

33-240-205 Spiral air hose, L = 3 m pcs.



### Support Rollers SEG

For machines as from 1998.

#### SEG (Omega,Sigma,Micro,SNB)

7633-V2 Alpine, Ø 50 mm, L = 85 mm pcs.

7634-V2 SNB-extension, Ø 50 mm pcs.

40-100-351 Spare O-Ring 40 x 4 mm pcs.



### Rubber Spray Guard

For the stone module.

#### Omega S 150, Race NC

67-207-267 L = 212 mm pcs.

#### Omega RS 150, Scout

67-207-268 L = 230 mm pcs.

#### Discovery 1, Omega S 350, Omega SBI

67-207-265 L = 350 mm pcs.

#### Omega RS 350

67-207-263 L = 420 mm pcs.

#### Discovery 2, Mercury

67-207-262 L = 420 mm pcs.



### Ski Retainer Discovery

#### Discovery 1, Discovery 2

64-140-886 Spare retainer, green pcs.

8550-0911-062 Switch Cam pcs.

02-195-116 Screw M4 x 16 pcs.

# MACHINE ACCESSORIES

## Wearing Parts



### Vacuum Suction Cup for Microjet

For Evolutiv and Microjet. To fix the skis and boards on the microjet; 2 pcs. per machine.

#### Microjet

67-227-420      Ø = 70 mm      pcs.



### Rubber Cutting for Vacuum Chuck, Tunejet

Tunejet

#### Tunejet

67-105-028      95 x 55 mm, oval      pcs.



### Squeegee 350 mm with Handle

55-240-200      L = 350 mm      pcs.



### Support Roller black

Micro, SNB 80, MCR, Trim 80/90, Polyjet

**MCR 800/1500, Micro 1/SB2, Micro 71, Micro 80/81/100, Micro 90/91, Polyjet 80/100/120/130, SNB 80, Trim 90/91**

64-140-870      Black      pcs.



### Touch Pen with holding

For all machines with touch screen.

7000-0811-V01      pcs.



### Lifter Cable, Control Cable

#### Omega B, Sigma Eco, Sigma S 200/350

47-180-400      Lifter cable      pcs.

#### Sigma SBI

47-180-410      Lifter cable belt side      pcs.

#### Micro 1/SB2, Micro 80/81/100, Micro 90/91

47-116-125      Lifter cable belt side > 99      pcs.

47-116-126      Lifter cable belt side < 1999      pcs.

#### MCR 800/1500

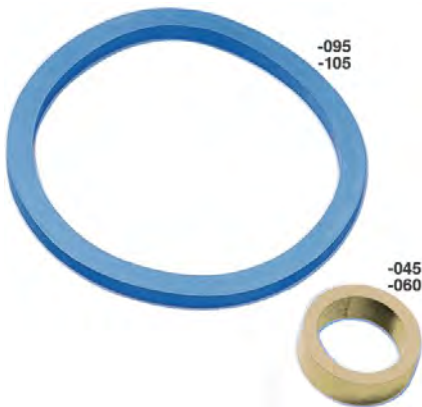
47-116-100      Control cable back      pcs.

47-116-110      Control cable front      pcs.

47-116-120      Lifter cable      pcs.

#### Micro 71

47-116-128      Lifter cable      pcs.



### Feed Wheel Rubber

#### Trimjet

56-400-060 4 pcs. per machine pcs.

#### Trim 71

56-400-045 2 pcs. per machine pcs.

#### MCR 800/1500

56-400-095 pcs.

#### CBM

56-400-105 pcs.



### Feed Wheel ø 205 mm x 57 mm

Needs 6 for complete replacement of each 350 mm feed wheel or 4 for 200 / 150 mm feed wheel assembly. All feed wheel rubbers should be replaced at the same time. Updated design for better life and performance and ease of replacement. Sold individually as each machine can have 2 or 3 feed wheels.

**Omega B, Omega RS 150, Omega RS 350, Omega S 150, Omega S 350, Omega SBI, Sigma B, Sigma S 200/350, Sigma S/RS 200, Sigma S/RS 350, Sigma SBI**

56-400-131 W = 57 mm x Ø = 205 mm pcs.



### Stone Cleaning Plate

#### Scout

8579-0224-V02 L = 195 mm pcs.

#### Discovery 2, Mercury

8570-0224-V02 L = 345 mm pcs.

#### Microjet, Tunejet

8700-0224-V02 L = 400 mm pcs.

#### Discovery 1

8550-0224-V02 L = 400 mm pcs.

#### Shuttle 200, Shuttle 3C

8500-02611-V2 L = 200 mm pcs.

#### Race NC

8040-0211-V05 L = 125 mm pcs.

#### Micro NC

8032-0211-V01 L = 200 mm pcs.



### Lacquer Sticks / Spray Paint

77-150-310 Spray paint light grey RAL9006 pcs.

77-150-311 Spray paint dark grey RAL9007 pcs.

77-150-312 Spray paint green RAL7070 pcs.

W-686-9006 Lacquer stick light gr.RAL9006 pcs.

W-686-9007 Lacquer stick gark greyRAL9007 pcs.

W-686-7070 Lacquer stick green RAL7070 pcs.

# MACHINE ACCESSORIES

## Wearing Parts



### Grease Gun

High quality grease gun. The construction allows a single hand operated lubrication for an easy work in restricted areas.

70-140-156  
76-320-141

Grease Gun with hose  
Heavy Duty Grease 400 g

pcs.  
pcs.



## Fluidmanagement

### For a healthy workplace and a proper environment.

The fluid management system from WINTERSTEIGER supplies complete information for testing water and waterbased lubricating coolants. Offering a wide range of services for optimal testing, especially important for WINTERSTEIGER emulsion (lubricants, cleaning solutions, etc.).

Thus the industrial safety and industrial laws are followed. Providing a healthier environment for everyone. This modular system offers one custom made solution for all ski and snowboard service workshops,

**The quality of the preparation water is a decisive factor for the properties of a cooling lubricant. The optimal water hardness is between 10 and 15° dH. If the preparation water is too hard, a decalcifying system should be installed or it should be mixed with demineralized water in order to avoid lime deposits at your machine. The most common decalcifying process is cation exchange (using water softening salts). The water analysis data can be obtained from the relevant water company on request.**

### WINTERSTEIGER health-tips

Since lubricating coolants contain many different chemicals, the following preventive measures are recommended:

- Using suitable protective clothing
- Using suitable protective gloves
- Using suitable skin protection
- Do not rub or touch nose, mouth or eye area with dirty hands
- When skin comes in contact with lubricating coolants it should be immediately rinsed
- Thorough cleaning of the hands before meals, the toilet attendance, before work breaks and after completion of the activity
- Be sure to clean all parts of the body that have come in contact with lubricating coolants at the end of the work day with warm water and mild, non-scrubbing detergents
- Afterwards apply skin creme to washed areas, as skin tends to dry out easily after being in contact with so many chemicals



#### Cooling Lubricant(Emulsion) Pro-Tec B370

Fully synthetic abrasive coolant with extended long term stability for manual machines and the automated machine Shuttle.

Please note:

- Mixing ratio: 2 - 3 %
- Calculation factor for the refractometer: 2.6 - Concentration of the coolant in % = refractometer-value (°brix) x 2.6; e.g. with a reading value of 1.1 on the refractometer the mixing ratio is 2.9 %;

55-645-273	10 kg can	pcs.
55-645-274	60 kg barrel	pcs.



#### Cooling Lubricant(Emulsion) Pro-Tec B550

Fully synthetic abrasive coolant with extended long term stability for automated machines Scout, Mercury, Discovery.

Please note: Mixing ratio: 3 - 4 %

Calculation factor for the refractometer: Concentration in % = refractometer-value (°brix) x 1,7; e.g. with a reading value of 2,0 on the refractometer the mixing ratio is 3,4 %

55-645-304	10 kg can	pcs.
55-645-294	50 kg barrel	pcs.





**Emulsion Mixer Monimix**

For a perfect and constant mixture to the emulsion.

55-645-311

pcs.



**Emulsion Mixer DOSATRON with Wall Socket**

With this new mixer, an inserted piston motor ensures a continuous mixture of the emulsion with the beginning water, independently of possible throughput and pressure fluctuations in the water net of the inlet. Additionally the mixer can be adjusted within the range of 1 % to 5 % to the necessary mixing ratio.

The accessories of this mixer contain:

- 1 wall support
- 1 transparent hose with filter and ballast weight (to place into the emulsion barrel)
- 1 connection hose (length 2m) to the water tank

7019-1011-V02

pcs.



**NEW**

**Manual Drum Pump for emulsion barrels**

Suitable to the metal emulsion barrels with a 2" internally threaded hole: 55-645-277 / Pro-Tec B470 and 55-645-294 / Pro-Tec B550. With a costless adaptor the pump is also useable with the barrel 55-645-274 / Pro-Tec B370.

- Flow Rate: 25 lt. / min
- Length of the immersion tube: 880 mm

55-645-385

H = 1050 mm

pcs.



**NEW**

**Barrel-Opener, galvanized**

For 3/4" and 2" caps at emulsion barrels.

8570-0811-100

300 x 45 x 38 mm

pcs.



**Micro Breather for Grinding Coolant**

The lifetime of emulsions (grinding coolants) are significantly reduced by external pollution (bacteria) and missing oxygen in the water. If the mixture of water and emulsion in grinding machines is not in motion over a longer time, some bacteria or fungi can occur in the water quickly. To avoid this and to extend the lifetime of cooling lubricants, very fine air bubbles can be created with this Micro Breather by a ventilation plate. This ventilation plate is placed in the water tank and is controlled by a timer, which controls when and how often the air bubbles will be blown into the emulsion mixture. The advantages for the user: increased lifetime, less change intervals, less consumption of the emulsion, improved hygiene, pleasant working atmosphere.

55-645-375

230 V / 50 Hz, 5 W

pcs.



### Refractometer

To check the mixing ratio of the emulsion in the water tank. Important in each workshop.

55-645-245

pcs.



### Pro-Tec B358 Analysis Kit with Refractometer

Enables the scrutiny and measurement of lubricating coolants as well as the documentation of the results of your measurement. This kit consists of: 1 pc. hard case. 1 set of 55-645-342 Pro-Tec B 360 combi test strips (100 pcs.) for the determination of ph-value, nitrite-value and water hardness, 1 pc. refractometer 55-645-245, 1 set of paper tissues, 1 pc. pipette, 1 pc. waterproof marker, 2 pcs. measurement charts, 1 handling and measuring instruction.

55-645-316

pcs.



### Pro-Tec B 360 Combi Strip (100 pcs.)

For the determination of ph-value, nitrite-value and water hardness with 1 strip.

55-645-342

pk.



### Pro-Tec B352 pH-Value Measurement Strips (100 pcs.)

55-645-244

100 pcs.

pk.



### Pro-Tec B 351 Cult Dip Measurement Strips (10 pcs.)

For bacterial, fungal and yeast determination.

55-645-320

10 pcs.

pk.



**Machine Cleaning Agent 1 lt.**

Special anticorrosive cleaning agent.

7019-1011-V01      1 lt.      pcs.

---



**Pro-Tec G260 Lubrication Additive 1 lt.**

Synthetic lubrication additive to add into the water tank - only for Discovery when using the Emulsion B370! Mixing ratio 0.05 % (0.5g/Liter), i. e. 1/8 lt. for the 225 lt. watertank at Discovery S / SF, 1/4 lt. for the 450 lt.-watertank at Discovery SS / PSF / SSF / PSSF / SSSF.

55-645-278      1 lt.      pcs.

---



**Pro-Tec G 220 Foam Cleaner Spray**

Forms a stable foam of in-depth effectiveness.

55-645-370      Aerosol can 500 ml      pcs.

---



**Pro-Tec G 230 Preservative Spray 500 ml**

Protects the varnish and prevents the corrosion of bare metal parts.

55-645-360      Aerosol can 500 ml      pcs.

---



**Lubricating Spray Neoval 400ml**

A high quality lubricating spray with high-grade additives. This chemically optimized lubricant is unique in design to provide outstanding performance. Versatility and reliable long-term performance makes this product to one of the best. Sprays in all positions (ball valve); never becomes gummy or sticky; free from acids, sulphure and silicone; high creep properties; UV-resistant; reduces friction, temperature and wear out; proved rust and corrosion protection according to DIN No 51 585 AIB; excellent heat resistance (-35°C to +500°C, short-term up to +1060°C); chemically neutral towards plastic or sealing material; shelf-life in container: 10 years; precise long-term lubrication; showing also excellent anti-corrosion properties and optimal creep properties. Neoval MTO 300 penetrates even to inaccessible lubricating points. Lubricates all kinds of movable plastic or metal parts. Treated parts stay clean and protected, Neoval MTO 300 does not attract dust.

55-645-112      Aerosol can 400 ml      pcs.

---



### WD-40 400 ml spray

For cleaning, greasing and to eject the humidity.

55-645-110      Aerosol can 400 ml      pcs.



**NEW**

### Pro-Tec G 254 System Cleaner 1l

For the disinfection of the machine caused by spoiled emulsion. Recommended concentration: 1 – 3 % (10 - 30 g/l.).

55-645-368      1 lt.      pcs.



**NEW**

### Pro-Tec B 365 Biocide

For a preventive use in the water tank to avoid possible problems with bacteria and germs. Recommended concentration: 0.1 % (1 lt./1.000 lt).

55-645-348      1 lt.      pcs.

Note the following recommendation for the correct application of the system cleaner Pro-Tec G254 and biocide Pro-Tec B365 depending on the water tank capacity of your machine.

Machine	Volume of Water Tank	Quantity of System Cleaner	Quantity of Biocide
Trimjet	60 lt.	0,9 lt.	0,06 lt.
Trim Disc 71 / 91	45 lt.	0,7 lt.	0,05 lt.
Omega, Sigma	80 lt.	1,2 lt.	0,08 lt.
Micro	95 lt.	1,4 lt.	0,1 lt.
Trim NC	100 lt.	1,5 lt.	0,1 lt.
Race NC / Micro NC	150 lt.	2,3 lt.	0,15 lt.
Scout	225 lt.	3 lt.	0,23 lt.
Mercury	225 lt.	3,0 lt.	0,23 lt.
Discovery 2 with Water Tank 225 lt.	225 lt.	3,0 lt.	0,23 lt.
Discovery 2 with Water Tank 350 lt.	350 lt.	5,3 lt.	0,35 lt.
Discovery 2 with Water Tank 550 lt.	550 lt.	8 lt.	0,5 lt.
Tunejet	225 lt.	3,4 lt.	0,23 lt.
Discovery S / SF	225 lt.	3,4 lt.	0,23 lt.
Disc / Finish Shuttle	250 lt.	3,8 lt.	0,25 lt.
Twin Shuttle	430 lt.	6,5 lt.	0,43 lt.
Jet Shuttle	430 lt.	6,5 lt.	0,43 lt.
Discovery PS / SS / PSF / SSF / SSSF / PSSF	450 lt.	6,8 lt.	0,45 lt.

# MACHINE ACCESSORIES

## Fluidmanagement



### Skin Protection Set Pro-Tec G290

With wall support; consisting of skin protection 1 lt, hand cleaner 3 lt. and skin care 1 lt.

55-645-355	Set including wall support	pcs.
55-645-356	Skin protection 1 lt.	pcs.
55-645-357	Hand cleaner 3 lt.	pcs.
55-645-358	Skin care 1 lt.	pcs.







### Belt Filter

For optional use with the automatic service station Scout, Mercury and Discovery. By permanent separating of the sharpening arrears the cleaning intervals of the machine as well as the life time of the water will be extended. At Discovery machines with one base processing module, the small gravity filter (500 mm wide filter fleece) has to be used, at machines with 2 or more base processing modules the large gravity filter (700 mm wide filter fleece).

#### Gravity Filter, small for Water Tank 200 lt.

**Discovery 2, Mercury, Scout**

8570-0851-V10	3x400V/3x220V, 50/60Hz, 0,12kW	pcs.
---------------	--------------------------------	------

#### Gravity Filter, large for Water Tank 350 lt.

**Discovery 2**

8570-0851-V11	3x400V/3x220V, 50/60Hz, 0,12kW	pcs.
---------------	--------------------------------	------

#### Inclined Bed Filter for Water Tank 550 lt.

**Discovery 2**

8570-0851-V23	3x400V, 50Hz, 0,12kW	pcs.
---------------	----------------------	------



### Filter Fleece for Belt Filter

The 500 mm wide filter fleece rolls are used for the gravity filter 8570-0851-V10 and the inclined bed filter 8570-0851-V23. The 700 mm wide filter fleece rolls are used for the gravity filter 8570-0851-V11.

#### Filter Fleece with good filter performance

**Discovery 1, Discovery 2, Mercury, Scout**

37-600-113	500 mm x 200 m	roll
------------	----------------	------

**Discovery 2**

37-600-114	700 mm x 200 m	roll
------------	----------------	------

#### Filter Fleece with medium filter performance

**Discovery 2, Mercury, Scout**

37-600-164	500 mm x 150 m	roll
------------	----------------	------

**Discovery 2**

37-600-165	700 mm x 150 m	roll
------------	----------------	------

#### 3D-Fleece w. maximum filter performance=recommended

**Discovery 2, Mercury, Scout**

37-600-160	500 mm x 50 m	roll
------------	---------------	------

**Discovery 2**

37-600-161	710 mm x 50 m	roll
------------	---------------	------



### Magnetic Rod

This filter has to be placed at the top of the the water tank and it collects the fine metal particles in the grinding water. Periodically it has to be remove and cleaned. Enables the reduced pollution of the grinding water.

**Discovery 2, Microjet, Omega S 150, Scout, Trimjet 2**

8700-0521-V06	L = 100 mm	pcs.
---------------	------------	------

**Discovery 1**

8550-0811-V08	L = 200 mm	pcs.
---------------	------------	------

**Trim 71, Trim 90/91**

8470-0521-V06	L = 100 mm	pcs.
---------------	------------	------

**Trimjet**

8480-0811-V13	L = 100 mm	pcs.
---------------	------------	------

# MACHINE ACCESSORIES

## Filter Accessories

### Recommendation: Aeration and ventilation of workshops with Grinding Machines due to the resulting emulsion vapors

During operation of the grinding machines an emulsion vapor (cooling lubricant vapor) arises from the grinding machine. At manual grinding machines the legal limit values of emulsion vapor concentration in the air of a workshop can be observed by multiple recirculation of the air volume of the workshop per hour. At automated grinding machines the legal limit values of emulsion vapor concentration in the air of a workshop can be observed by aeration and ventilation of the workshop or by extraction of the coolant vapor from the grinding machine. For an effective removal of cooling lubricant vapor out of the room there is a sufficient amount of temperature-controlled air required.

The operator of a workshop has the responsibility that workshop and operation is in compliance with all valid legal regulations in regards to accident prevention, workplace and environmental rules (and other applicable regulations). Thus we recommend that planning, dimensioning and installation of an aeration, de-aeration and ventilation system is performed by a local qualified ventilation company. Technical informations on the installed grinding machines in the backshop room like air flow per hour can be provided by WINTERSTEIGER in order to ensure the appropriate sizing of the exhaustion.



#### Water Cooler with Thermo Chiller

At service machines this cooling device (optional and retrofitted) secures an stable temperature of the grinding water. With this thermo chiller, WINTERSTEIGER provides a new and user-friendly cooling concept. Your benefits summed up: an continuous water temperature ensures continuous grinding results, longer life time and changing intervals of the grinding water, less bacterial growth, less emulsion consumption and a lower wear of the grinding stones and diamond dressers. Practical: the installation of the heat exchanger on the top of the water tank allows an easy cleaning of the water tank.

##### For water tank 225lt. at Scout/Mercury/Discovery 2

50-400-080	Thermo Chiller 1x200-230V/50Hz	pcs.
8570-0861-V01	Heat Exchange Kit f.225lt.Tank	pcs.
8570-0861-V20	Electric parts kit 3x400V/50Hz	pcs.

##### For water tank 350 lt. at Discovery 2

50-400-080	Thermo Chiller 1x200-230V/50Hz	pcs.
8570-0861-V02	Heat Exchange Kit f.350lt.Tank	pcs.
8570-0861-V20	Electric parts kit 3x400V/50Hz	pcs.

##### For water tank 550 lt. at Discovery 2

50-400-080	Thermo Chiller 1x200-230V/50Hz	pcs.
8570-0861-V03	Heat Exchange Kit f.550lt.Tank	pcs.
8570-0861-V20	Electric parts kit 3x400V/50Hz	pcs.

##### For manual machines Omega/ Race NC

50-400-080	Thermo Chiller 1x200-230V/50Hz	pcs.
8100-0861-V01	Heat Exch. Kit f.Omega/Race NC	pcs.

## Filter Accessories



### Filter Bags

Machine Type	Art.No.	Techn. Data
Discovery 1, Discovery 2, Mercury, Scout, Shuttle 3C, Tunejet	55-635-165	ø 320 x 1500 mm, washable

## Filter Bags

Machine Type	Art.No.	Techn. Data
Omega, Omega B, Omega RS 150, Omega RS 350, Omega S 150, Omega S 350, Omega SBI, Sigma, Trim NC	55-635-175	ø 140 x 500 mm, washable
Micro 80/81/100, Micro NC, Microjet, Shuttle 3C, SNB 80, Trim 90/91, Trimjet	55-635-170	ø 250 x 560 mm
Micro 71	55-635-160	ø 230 x 555 mm with metal ring
Micro 80/81/100, Micro 90/91, Micro NC, SNB 80	7600-01311-V3	Filter bag with metal frame

## Filter Socks

Machine Type	Art.No.	Techn. Data
Discovery 1, Discovery 2, Mercury, Omega, Race NC, Scout, Sigma	55-635-185	Endless filter sock, L = 50 m
	55-635-180	Filter sock, L = 100 cm

## Filter Mats

Machine Type	Art.No.	Techn. Data
Scout	50-400-195	1200 x 600 x 20 mm
Discovery 1, Discovery 2, Mercury, Shuttle 200	50-400-180	1400 x 600 x 20 mm
Micro 80/81/100, Micro 90/91, Micro NC, Race NC, SNB 80	50-400-185	830 x 365 x 20 mm
Trimjet 2	50-400-190	350 x 330 x 20 mm
Shuttle 3C	50-400-175	1155 x 840 x 20 mm
Microjet	50-400-176	1050 x 820 x 20 mm

## Filter Fleece

Machine Type	Art.No.	Techn. Data
Micro 80/81/100, Micro 90/91, Micro NC, Race NC, SNB 80	37-600-121	700 x 1170 mm, 10 pcs.
Microjet, Shuttle 3C	37-600-123	1200 x 1500 mm, 10 pcs.
	37-600-119	Roll 1200 mm x 100 m
Micro 80/81/100, Micro 90/91, Micro NC, Race NC, SNB 80	37-600-116	Roll 695 mm x 50 m

# MACHINE ACCESSORIES

## Accessories for Waxing Machines

### Filter Catriges

Machine Type	Art.No.	Techn. Data
Discovery 2, Mercury	37-600-142	L = 250 mm, 300 µm
Omega	37-600-146	L = 125 mm, 250 µm
Race NC	37-600-140	L = 250 mm, 150 µm

### Cleaning Sieve

Machine Type	Art.No.	Techn. Data
Micro 80/81/100, Micro 90/91, Micro NC, Sigma, Trim 71, Trim 90/91, Trimjet	64-140-900	288 x 233 mm



### Endless Filer Sock Strap

Strap to fix the endless filter sock.

Discovery 1, Discovery 2, Mercury, Omega, Scout, Sigma

75-150-012

L = 50 cm, W = 25 mm

pcs.

5

## Accessories for Waxing Machines

### Deburring Wheels

Machine Type	Diameter	Width	Usage	Art.No.
Waxjet 80/90 SNB, Waxjet Pro/91/92	165 mm	45 mm	Deburring Wheel	55-420-116
Discovery 1	155 mm	350 mm	Deburring Wheel	55-420-125



55-420-116



55-420-125

### Waxing Wheels

Machine Type	Diameter	Width	Usage	Art.No.
Discovery 2, Mercury	100 mm	350 mm	Waxing Wheel	55-642-050

Waxing Wheels

Machine Type	Diameter	Width	Usage	Art.No.
Discovery 1, Waxjet 80/90 SNB, Waxjet 93, Waxjet Pro/91/92	155 mm	350 mm	Waxing Wheel	1-9-0135
Waxjet 80/90 SNB, Waxjet 93, Waxjet Pro/91/92	155 mm	350 mm	Waxing Wheel	55-642-040
Shuttle 3C	155 mm	200 mm	Waxing Wheel	1-9-0133
Waxjet 75/76 <=1998	155 mm	150 mm	Waxing Wheel	1-9-0139
Polisher 40 Single, Waxjet 75/76 <=1998	200 mm	150 mm	Waxing Wheel	1-9-0140
BBG, CBM	200 mm	100 mm	Waxing Wheel	1-9-0130



Polishing Wheels (Texturing Brushes)

Machine Type	Diameter	Width	Usage	Art.No.
Speedbrush, Waxjet 80/90 SNB, Waxjet 91, Waxjet 93, Waxjet Pro/91/92	155 mm	350 mm	Double Brush/Polishing Brush	55-642-045
Discovery 2, Mercury	100 mm	350 mm	Polishing Wheel	55-642-055
	100 mm	350 mm	Scotchbrite Texturing Wheel	55-642-060
	100 mm	350 mm	Nylon Texturing Wheel	55-642-065
Discovery 1, Speedbrush, Waxjet 80/90 SNB, Waxjet 93, Waxjet Pro/91/92	155 mm	350 mm	Polishing Wheel	55-642-041
Waxjet 80/90 SNB, Waxjet 93, Waxjet Pro/91/92	155 mm	350 mm	Polishing Wheel	55-642-006
Tunejet	75 mm	400 mm	Polishing Wheel	55-420-130
Shuttle 3C	100 mm	150 mm	Polishing Wheel	55-420-109



# MACHINE ACCESSORIES

## Accessories for Waxing Machines

### Polishing Wheels (Texturing Brushes)

Machine Type	Diameter	Width	Usage	Art.No.
Waxjet 75/76 >1998, Waxjet 90	200 mm	150 mm	Polishing Wheel	55-642-004



5



#### Waxing Belts

##### Waxjet 75/76 <=1998

55-640-190 150 x 450 mm pcs.

##### SWM, Waxjet 80/90

55-640-180 100 x 800 mm pcs.

##### Waxjet 80/90 SNB, Waxjet 81

55-640-185 350 x 450 mm pcs.

##### SNBWM

56-180-370 340 x 1050 mm pcs.

##### Reichmann BWM 350

55-640-188 350 x 472 mm pcs.



#### Polishing Belt Scotchbrite Shuttle 3C

##### Shuttle 3C

56-180-500 Ø = 90 mm, W = 120 mm pcs.



### Waxing Fleece 150 mm x 50 m

Shuttle 3C, Trim 100/120

1-9-0311 W = 150 mm x 30 m pcs.



### Neoprene Sleeve W= 350 mm SKID WAX'ON

Skidwax, Waxon

56-180-372 Ø = 119 mm, W = 350 mm pcs.



### Exhaustion Hood for Waxjet

Including 30° pipe bend and 150 mm hose connection nozzle. The suction hose connecting to this and any extractor fan which may be required must be provided on site.

Waxjet 90, Waxjet 93, Waxjet Pro/91/92

7567-4411-V01 pcs.



### Wax Blocs for Automats

#### Wax Bloc Discovery

Discovery 1, Discovery 2, Mercury

55-640-117	W=340 mm, universal wax	pcs.
55-640-118	W=340mm, warm, f. 0° to -8°C	pcs.
55-640-119	W=340mm,cold, f. -8° to -20°C	pcs.

#### Wax Bloc Tunejet

Tunejet

55-640-157	W=390 mm, universal wax	pcs.
55-640-158	W=390mm, warm, f. 0° to -8°C	pcs.
55-640-159	W=390mm,cold, f. -8° to -20°C	pcs.



### Bar Wax WINTERSTEIGER

1 box = 10 x 250 g = 2,5 kg; for hot waxing of skis and snowboards; handy bar shape to apply to waxing machines.

55-640-330	2,5 kg,yellow/warm,f.0° to-8°C	pk.
55-640-335	2,5 kg,blue/cold,f.-8° to-20°C	pk.
55-640-340	2,5 kg,white/universal	pk.
55-640-345	2,5 kg,black/universal,molybd.	pk.

# MACHINE ACCESSORIES

## Accessories for Binding Adjusting Machines



### Block Wax WINTERSTEIGER

1 Counter Top Display Box = 80 x 30 g = 2,4 kg; for hot waxing of skis and snowboards.

55-640-350	2,4 kg,yellow/warm,-8°C to 0°C	pk.
55-640-355	2,4 kg,blue/cold,-8°C to -20°C	pk.
55-640-360	2,4 kg, white, universal	pk.



### Wax Flakes WINTERSTEIGER

5 kg box; for hot waxing of skis and snowboards.

55-640-310	5 kg,yellow/warm, -8°C to 0°C	pcs.
55-640-315	5 kg, blue/cold-8°C to -20°C	pcs.
55-640-320	5 kg, white, universal	pcs.



### Liquid Wax WINTERSTEIGER

Alpine Liquid Wax for all snow temperatures.

55-640-365	5 lt. Can	pcs.
55-640-370	1 lt. Bottle	pcs.



### Wax Remover WINTERSTEIGER

55-640-305	1 lt.	pcs.
55-640-300	5 lt.	pcs.



### Power Pump 1,5 lt.

Handy pump sprayer for the application of liquid wax or wax remover/ base cleaner.

55-640-147	Without liquid, 1,5 lt.	pcs.
------------	-------------------------	------

Accessories for Binding Adjusting Machines



**Thermopaper**

With 10 years readability. Type 15-798-305 and 15-798-290 for receipt printer, type 15-798-286 für thermo printer.

**Safetronic**

15-798-305 W = 57 mm, L = 25 m roll

**Drivetronic**

15-798-290 W = 57 mm, L = 10 m roll

**Drivetronic, Speedtronic**

15-798-286 W = 80mm,w.10years readability roll



**Printing Forms for Binding Testers**

**Printing Forms Drivetronic, 5 Skier Types**

**Drivetronic, Safetronic**

55-700-990 GER,kg, 500 pcs., 5skier types pk.

**Printing Forms wide, 5 Skier Types**

**Drivetronic, Safetronic, Skitronic Plus, Speedtronic, Speedtronic Pro**

55-700-900 GER,kg+labels,500 pcs.,5 types pk.  
55-700-950 GER,kg, 500 pcs. 5 skier types pk.  
55-700-970 NL, kg, 500 pcs.,5 skier types pk.  
55-700-960 EN, kg, 500 pcs.,5 skier types pk.

**Printing Forms wide, 3 Skier Types**

**Drivetronic, Safetronic, Skitronic Plus, Speedtronic, Speedtronic Pro**

55-700-620 GER,kg+labels,500 pcs.,3 types pk.  
55-700-630 GER,kg, 500 pcs., 3 types pk.  
55-700-600 GER,Tibia+Label,500pcs.,3types pk.  
55-700-601 GER,Tibia, 500 pcs., 3 types pk.



**Binding Control Device**

Once a month, your binding testing machine must be checked with a test binding.

7711-401 pcs.



**Clips (12 pcs.) for Printing Forms**

To fix the printing forms at the skis.

55-700-320 12 pcs. pk.



**Tibiameter**

7019-01111-18 pcs.

# MACHINE ACCESSORIES

## Accessories for Binding Adjusting Machines



### Cleaning Card for Binding Tester

Drivetronic, Safetronic, Skitronic Plus, Speedtronic, Speedtronic Pro

55-700-500

pcs.



### Printer Ribbon

**Skitronic**

16-900-004

pcs.

Drivetronic, Safetronic, Skitronic Plus, Speedtronic, Speedtronic Pro

16-900-501

pcs.



### Spare Heel Release Belts

**Speedtronic Pro**

67-760-151 L = 300 mm

pcs.

**Drivetronic, Safetronic**

67-760-152 L = 320 mm

pcs.

**Speedtronic**

67-760-150 L = 250 mm

pcs.

**Skitronic Plus**

7700-04211-19 L = 360 mm

pcs.

7700-04211-20 L = 330 mm f.platform bindings

pcs.



### Spare Clamps for Binding Testers

**Skitronic, Skitronic Plus**

64-140-676 5 mm

pcs.

64-140-677 10 mm

pcs.



### Bent Lever Clamping Kit Speedtronic/Drivetronic

Complete clamping kit Speedtronic Pro as conversion kit for Drivetronic/Speedtronic.

**Drivetronic, Speedtronic**

7726-10

pcs.



PROSHARP AS1001



**Skate Grinding Machine PROSHARP AS1001**

The PROSHARP AS1001 enables with automated grinding cycles, constant grinding pressure and feed speed a very precise and continuous grinding quality.

- Adjustable hollow setting, up to 6 mm radius
- Adjustable grinding wheel pressure and feed speed are constant during the entire grinding cycle
- The boot is fixed on a clamping device and the whole clamping device moves with a constant speed automatically forward and backward over the grinding wheel with a chosen number of grinding cycles (up to 5 grinding cycles)
- **NEW:** with modified dressing unit to create a Z-channel. This Z-channel gives increased grip, edge control and more speed!

**Technical data**

- Power Rating: 200W
- Voltage: 1 x 100 - 240 VAC; 50 - 60 Hz
- Length: 660 mm, Width: 200 mm, Height: 240 mm
- Weight: 18 kg
- Comes with a stable transport box 5-755-040

**Skate Grinding Machine PROSHARP AS1001**

55-755-040      100 – 240 V, 50 – 60 Hz, 200 W      pcs.

**PROSHARP AS1001 Diamond Dresser (synthetic)**

55-755-050      pcs.



**PROSHARP Blade Thickness Checker**

55-755-055      pcs.



**PROSHARP Skate Grinding Wax, 62 g**

At the skate grinding machines with ceramic grinding wheel, a finer and more shiny blade of the skate can be reached by applying a „grinding wax“ at the grinding wheel.

55-755-110      62 g      pcs.



**PROSHARP Grinding Wheels AS1001**

55-755-045      Ø 150 mm x 6 mm, grit 70, fine      pcs.  
55-755-049      Ø130mmx6mm, grit 90 very fine      pcs.  
55-755-047      Ø 150 mm x 6 mm, grit 54, coarse      pcs.



# SKATE GRINDING MACHINES AND ACCESSORIES

## PROSHARP AS1001



**NEW**

### Prosharp Blade Measuring Tool Package

Includes tools to check the blade-thickness, hollow-radius, angle and radius-profile on the blade.

55-755-118

pcs.



**NEW**

### Prosharp Fork Hone no. 25029

Allows quick re-sharpening of the skates between the services with a grinding machine.

55-755-119

pcs.

6





# SKATE GRINDING MACHINES AND ACCESSORIES

## SSM-2/H 10



### Skatepal Diamond Grinding Wheels

With given hollow radius; grit 252 = rough, grit 64 = fine;

Suggested grinding radius:

- Children: 13 mm
- Adults: 19 - 25 mm
- Figure skating: 10 - 13 mm
- Hockey: 10 - 13 mm for the goalie, 19 mm for fielders
- Rental: 19 mm = universal
- Speed skates: flat

Wheel diameter: Ø 60 mm for figure skating/speed skating, Ø 75 mm for Z- channel and Ø 100 mm for the other applications

The Z-channel is a groove in the middle of the blade along the entire blade length. This channel reduces friction with less blade touching the ice. It increases the grip and the speed by creating two interior edges. Mainly used for hockey boots.

55-755-087	Radius 25 mm, Ø 100 mm, grit 64	pcs.
55-755-086	Radius 13 mm, Ø 100 mm, grit 64	pcs.
55-755-093	Radius 10 mm, Ø 100 mm, grit 252	pcs.
55-755-096	Radius 10mm, Ø 100 mm, grit 64	pcs.
55-755-088	Radius 13mm, Ø100mm, grit 252	pcs.
55-755-089	Radius 19 mm, Ø 100 mm, grit 252	pcs.
55-755-097	Radius 10 mm, Ø 60 mm, K64	pcs.
55-755-091	Radius 13 mm, Ø 60 mm, grit 252	pcs.
55-755-090	Radius 13 mm, Ø 60 mm, grit 64	pcs.
55-755-098	Ø 75 mm, Z-Kanal Medium	pcs.
55-755-094	Flat, Ø 60 mm, grit 64	pcs.

## SSM-2/H 10



### SSM-2/H8 Skate Grinding Machine 1x220V/5

Portable skate grinding machine for hollow and flat grinding. Features an adjustable support roller, quick release holder and dust outlet. The new quick release holder H 10 enables also the fixation of speed skating boots.

7750	220 – 240 V, 50 – 60 Hz, 250 W	pcs.
------	--------------------------------	------

### Stand for SSM Skate Grinding Machine

7922-401	350 x 400 x 750 mm	pcs.
----------	--------------------	------



### SSM Grinding Wheel pink 150x6 mm

55-755-020	Ø 150 mm x 6 mm	pcs.
------------	-----------------	------



### SSM Grinding Wheel blue 150x6 mm

For hard metal skates.

55-755-021	Ø 150 mm x 6 mm	pcs.
------------	-----------------	------



### Diamonds SSM-2

55-755-025	Hollow grinding, l = 80 mm	pcs.
55-755-026	Flat grinding, l = 50 mm	pcs.

### For Zebra Label Printers



#### Thermotransfer Cartridge for Plastified Labels

Type 15-798-182 suitable for für Zebra label printer TLP 2824, type 15- 798-830 for Zebra printer TLP 2844/ GK 420

15-798-182	Resin, W = 56,9 mm, L = 74 m	pcs.
15-798-830	like -182,w.carrier roll 110mm	pcs.



#### Plastified Labels

On carrier paper, removable, waterproof.

##### Plastified Labels, non perforated carrier paper

15-798-187	40 x 12 mm, 2000 pcs.	roll
------------	-----------------------	------

##### Plastified Labels with perforated Carrier Paper

15-798-205	40 x 25 mm, 2000 pcs.	roll
15-798-825	50 x 25 mm, 1300 pcs.	roll
15-798-184	57 x 32 mm, 2000 pcs.	roll



#### Paper Labels

For merchandise management and depot.

15-798-185-04	40 x 25 mm, 2000 pcs.	roll
15-798-835	50 x 25 mm, 1300 pcs.	roll
15-798-185-01	57 x 32 mm, 2100 pcs.	roll



#### Thermotransfer Cartridge for Paper Labels

For Zebra label printer TLP 2824, non-bleaching.

15-798-181	Waxed, W=56,9mm, L=74m	pcs.
------------	------------------------	------

### For Bon Printers



#### Thermo Paper for Bon Printers

80 mm wide, L = 80 m, 50 pc. per box, price per unit.

##### Drivetric, Speedtronic

15-798-186	Standard quality	roll
15-798-286	W = 80mm,w.10years readability	roll



# ACCESSORIES FOR EASYRENT RENTAL SOFTWARE

## Various Accessories for Easyrent

### Various Accessories for Easyrent



#### Labels 90x13mm for Goggles, 1,250 pcs.

On carrier paper, removable, waterproof. For the retail pricing of goggles. Suitable for Zebra Zebra printer TLP 2844/ GK 420.

15-798-298      90 x 13 mm, 1250 pcs.      roll



**NEW**

#### Polyester Labels 65 x 135 mm, 500 pcs., perforated

On release paper, removable, waterproof. For the use with service and assembly orders; with multiple number labels and detachable customer label. Suitable to Zebra printer TLP 2844/ GK 420.

15-798-275      65 x 135 mm, 500 pcs.      roll



#### Thermotransfer Cartridge for Labels for Goggles

Resin premium, suitable to Zebra printer TLP2844, GK420.

15-798-855      Premium resin, W=110mm, L=74m      pcs.



#### Easyrent Client Card (500 pcs.)

55-700-790      German/ English      pk.

Barcode Labels



**Standard Barcode Labels**

High-quality labels on rolls, with consecutive numbering (pairwise).

78-220-575	White, 30x17mm, 500 pair	roll
78-220-574	White, 30x17mm, 100 pair	roll
78-220-585	Red, 30x17mm, 500 pair	roll
78-220-586	Blue, 30x17mm, 500 pair	roll
78-220-587	Yellow, 30x17mm, 500 pair	roll
78-220-588	Green, 30x17mm, 500 pair	roll
78-220-589	Orange, 30x17mm, 500 pair	roll
78-220-596	30 x 17 mm, 500 pcs.	roll



**Barcode Labels with customized Logo**

Customized high-quality labels on rolls, with consecutive numbering (pairwise). Delivery time: 5 - 6 weeks; minimum quantity: 6 rolls = 3000 pair labels.

78-220-578	30x25mm, 500 pair	roll
78-220-590	30x17mm, 500 pair	roll



**NEW**

**Barcode Labels 30 x 17 mm, white, single**

High-quality labels on rolls, with consecutive numbering. 500 pcs. single labels for snowboards, helmets, bicycles...

78-220-596	30 x 17 mm, 500 pcs.	roll
------------	----------------------	------





## Easystore Flex Custom-made solutions – the right choice for everyone.

WINTERSTEIGER's Easystore Flex systems for rental, depot and drying are extremely flexible and stable – they also offer a modern design as well as many new solutions that make them highly functional.

The Flex Modules can be combined for customized solutions.

Easystore Flex is the result of: the feedback and needs of our global customers, the further development of the tried-and-tested Easystore systems and the collaboration with renowned design agencies.

Experience the successful difference of Easystore Flex!



Easystore Flex –  
more than just an  
eye-catcher.



## Compelling details.

Two types of Easystore Flex storage systems are available:

- Ski racks of sendzimir-galvanized panel-sheet **1** – ideal for the back-of-shop area
- Ski racks of sendzimir-galvanized panel-sheet with additional powder coating **2** – for a professional appearance



For an individual design, the ski rack's vertical supports can be equipped with narrow **3** or wide **4** front panels at the front and rear. We are happy to assist you with the design, including suggestions for the graphics.



## FOM – Functional. Optimal. Maximal.

For the front panel, there are three options to choose from:

- Functional: The entry-level model in trendy white
- Optimal: A selection of wood designs
- Maximal: Panels printed with your logo and professional design



Functional



Optimal



Maximal



## Easystore Flex – flexibly combining modules.



The individual storage and drying modules can be combined and arranged into individual storage systems – even within the same rack.



## From planning to implementation. Benefit from our experience.

WINTERSTEIGER supports you from the planning phase all the way to implementation of your perfect rental and depot facility. An optimal organization – from the arrival of the customer to the issuing of the sports equipment – provides faster turnaround times and makes the work easier.



2D planning



3D planning



Implementation

# Easystore Shop Furniture

A brilliant combination of design, ergonomics and flexibility.

Easystore shop furniture proves vividly that form and function can go hand in hand on the shop floor. WINTERSTEIGER has successfully combined ergonomic requirements with timeless minimalist design into a trendy package – while achieving an extremely high level of flexibility in customization.

The result is a modular furniture program that guarantees a user-friendly and attractive environment for you and your customers.



## More success – with the customized FOM system.

### Functional. Optimal. Maximal.

Easystore shop furniture is geared to your ideas. Our FOM system offers three appealing choices to customize your shops and optimize your workflow.

**Functional** – the entry-level model in trendy white

**Optimal** – offers the widest choice of colors and styles

**Maximal** – stands for project-specific design of your shop furniture





## Easystore Tailor-made storage solutions – the right choice for everyone.

Easystore locker systems by WINTERSTEIGER make an impression with state-of-the-art design, maximum flexibility and stability, and maximum storage capacity on a minimal footprint. Customized features allow you to choose your own colors, logos, visuals and labeling to customize the locker design.

Thanks to our partnership with Gladek Technik in the field of storage lockers, our range of rental, storage and drying systems has become even more versatile. We plan storage lockers individually based on your requirements, taking maximum space utilization, drying and disinfection into account and at the same time catering to your access system needs.

Our Easyrent rental, storage and POS software makes storage management unbelievably fast and easy. It also features a simple module for managing and lock control for the Easystore locker systems.

Benefit from our experience. WINTERSTEIGER supports you from the planning phase all the way to implementation of your perfect storage facility. Read the following pages to discover in detail what WINTERSTEIGER offers you.

Please request the Easystore locker systems brochure for detailed information about customized locker solutions.



# PROMOTIONAL MATERIAL

## Clothing

### Clothing



#### Workshop Apron WINTERSTEIGER

78-300-585

pcs.



#### WINTERSTEIGER Buff® (multifunctional tubular headwear)

The original Buff® is a high-stretch and seamless multifunctional tubular made of 100% microfiber. Can be used as scarf, hat, balaclava or headband. Offers excellent breathability and moisture control.

- 100% Polyester Microfiber
- Machine washable up to 40° C, no iron

78-350-587

pcs.

### Various Promotional Material



#### Ski Clip Alpine

78-300-224

Alpine, green, 450 x 38 mm

pcs.

78-300-227

Alpine, green, 560 x 60 mm

pcs.



#### Ski Clip Cross Country

78-300-222

Cross-country, green, 38 mm

pcs.



### Workshop Service Sticker

With consecutive numbering, minimum order: 1 bag = 100 pcs., informs your customer about the service steps and the advantages of a service.

78-300-780	German, 22,5 x 6 cm, 100 pcs.	pk.
78-300-781	English, 22,5 x 6 cm, 100 pcs.	pk.
78-300-782	French, 22,5 x 6 cm, 100 pcs.	pk.
78-300-783	Italian, 22,5 x 6 cm, 100 pcs.	pk.



### Ski-Zip

78-300-225	pcs.
------------	------



### Anti Theft Device with code number lock

With sturdy plastic housing, code number lock with 4 digits and stainless steel wire; the handy antitheft device for your winter sports equipment.

55-100-908	pcs.
------------	------



# PRODUCT INDEX

2-Part Adhesives	29, 30	File Brush	9, 35	Screwdriver Bit	21, 22
Air Dryer Kit	72	File Guide	8, 9, 10, 35, 36, 37	Screwdriver Bit long	22
Air Filter System	70	Filter Bags	110, 111	Screw-Driver device FEIN	18, 19
Air pistol	99	Filter Catridge	112	Screw-Driver FEIN	18
Alu-Oxyd-File	34	Filter Fleece	109, 111	Side-Edge Grinding Belt	76
Analysis Kit	105	Filter Mat	111	Sidewall Planer	7, 34, 91, 92
Anti Theft Device	133	Filter Sleeve	112	Silicone Pater	28
Balancer 1-2 kg	14	Foam Cleaner Spray	106	Skate Grinding Machine	119, 120, 121, 122
Barcode Labels	125	Foot Sizing Device	58	Ski-Clip	132
Bar Wax	115	Fork Lift Truck	73	Skin Protection	108
Base Grinding Belt	76, 77, 78	Grease Gun	102	Ski Pole Accessories	50
Base Material	29	Grinder	58	Ski Retainer Discovery	99
Base Planer	32, 33	Grinding Paper	32	Ski Vise	6, 7, 16, 17, 18
Base Polish Set	33	Grinding Stone	82, 87	Ski-Zip	133
Base Repair Pistol	31, 70	Gummi Stone	9, 34, 35	Spare Clambs f.Binding Testers	118
Base Repair Set	27	Hammer	27	Spare Heel Release belt	118
Base Repair Sticks	10	Heating Plate	27	Spare Non-Slip Tape	95, 96
Base Scraper	32	Helmet Disinfection Liquid	60	Spray Bottle	60
Belt Dresser Stone	79	Hole Plugs	25	Spray Guard	99
Belt Filter	109	Hollow Drill Bit	20	Spray Paint	101
Binding Bridge	94, 95, 96, 97	Hollow Key	98	Squeegee	100
Binding Drill	19, 20, 21	Labels	123, 124	Stand for Binding Bridge	97
Binding Glue	25	Lacquer Stick	101	Stone Cleaning Plate	101
Binding Screws	24	Liquid Wax	116	Structure Brush Machine	67, 68
Binding Spray	20	Lubricating Grease	102	Suction Cup	100
Biocide	107	Lubricating Spray	106, 107	Support Roller	99, 100
Bloc Wax	45, 116	Lubrication Additive	106	Switch Cam	99
Boot Cleaner	61	Machine Cleaning Agent	106	System Cleaner	107
Boot Disinfection Liquid	60, 61	Magnet Filter	109	Test Binding	117
Boot Opener	57	Magnet Tool Holder	14	Test Strip	105
Boot Repair Kit	57	Metal-Grip	32	Thermo Jomax	44
Boot Repair Screws	57	Metal Scraper	10, 12, 33, 46	Thermo Paper	117, 123
Bowden cable	100	Micro Breather	104	Thermotransfer Cartridge	123, 124
Brake Retainer	7, 26	Mixing Cups	30	Tibiameter	117
Brass Inserts	23	Mixing Sticks	30	Tool Box	51
Buffing Pad	12	Moonflex-File	38	Touch Pen	100
Buffing Wheel	92	Mounting Screws f.ceramic disc	91	True Bar	7, 33
Buff Tubular	132	Mounting Vise	18	Tuning Belt	76, 78
Ceramic Disc	90, 91	Moveable Drawer Cabinet	15	Ultracam Boot Press	54, 55, 56
Chisel	29	Multi-Inserts	19	Water Cooler	110
Cleaning Card	118	Neoprene Sleeve	115	Wax	11
Cleaning Tube with Spray Gun	99	Nylon Texturing Wheel	113	Wax Belt	114
Client Card Easyrent	124	Paper-Roll Holder	15	Wax Bloc Discovery/Mercury	115
Clip for Printing forms	117	Paper Tape	46	Wax Bloc Tunejet	115
Colour Paste	30	Plastic Inserts	23	Wax Brush	12, 47
Combi Stone	34	Pocket Stone	9	Wax Future	66
Compressor	59, 71, 72	Polishing Belt	78, 79, 114	Wax Granular	45, 116
Control Cable	100	Polishing Wheel	113, 114	Waxing Fleece	115
Cork Finish Belt	78	Polyethylene Wire	73, 74	Waxing Machine	41, 42, 64, 65
Deburring Wheel	112	Power Pump	45, 116	Waxing Wheel	112, 113
Deodorizer	61	Printer Ribbon	118	Wax Iron	11, 42
Diamond Bit	85, 88, 89, 91	Printing forms	117	Wax Remover	11, 45, 116
Diamond File	10, 38	Protective Goggles	98	Work Bench	13, 14, 16, 56
Discman	8, 39, 40, 41	Punch	28	Working Gloves	98
Disinfection Device Easyfresh	59	Punch Plate	27	Workshop Apron	132
Double Brush/Polishing Brush	68, 113	Refractometer	105	Workshop Service Sticker	51, 133
Dummy Sole	97	Repair-Pins	31		
Edge Grinder	7, 8, 39	Rivet Machine	57		
Emulsion	103, 104	Rivets	58		
Emulsion Mixer	104	Roto Brush	47, 48, 49		
Endless Filter Sock	111, 112	Rubber Mat	15		
Exhaustion for Waxjet	115	Scotchbrite Belt	77, 78		
Eyelets	58	Scotchbrite Texturing Wheel	113		
Feed-Wheel Ring	101	Scraper Sharpener	12, 46		
File	9, 10, 32, 36, 37, 38, 46	Screwdriver	22, 23		











## VISIT THE WINTERSTEIGER WEBSITE

Click on the SPORTS tab and you will find:

- Latest news on products, services and technologies
- Fair dates
- The complete machinery program
- Solutions for the rental business
- Accessories Shop
- After Sales Services
- Professional marketing support
- Why Ski & Board Tuning?
- References



[www.wintersteiger.com](http://www.wintersteiger.com)

Success begins with the right decisions. At the right time.  
We look forward to you!



**First Class**  
**WINTERSTEIGER**  
Ski & Board Tuning

#### Headquarters:

**Austria:** WINTERSTEIGER AG, 4910 Ried, Dimmelstrasse 9,  
Tel.: +43 7752 919-0, Fax: +43 7752 919-52, sports@wintersteiger.at

#### International Companies:

**Canada:** WINTERSTEIGER Inc., CDN-Laval Q.C. H7L 5A1,  
964 Bergar Street, Tel.: +1 450 6637800, Fax: +1 450 6632896,  
info@canada.wintersteiger.com

**Germany:** WINTERSTEIGER AG, Subsidiary Germany,  
99310 Arnstadt, Alfred-Ley-Strasse 7, Tel.: +49 3628 66399 1970,  
Fax: +49 3628 66399 1973, sports@wintersteiger.at

**France:** SKID-WINTERSTEIGER S.A.S., 73800 Ste. Hélène du Lac,  
Parc d'Activités Alpespace, Tel.: +33 479 25-1160,  
Fax: +33 479 25-1161, office@skid-wintersteiger.com

**Italy:** WINTERSTEIGER Italia s.r.l., 39030 La Villa in Badia (BZ),  
Strada Ninz, 82, Tel.: +39 0471 844 186, Fax: +39 0471 188 1664,  
info@wintersteiger.it

**Russia:** OOO WINTERSTEIGER, Krzhizhanovsky Str. 14, Build. 3,  
117218 Moscow, Russia, Tel.: +7 495 645 84 91,  
Fax: +7 495 645 84 92, office@wintersteiger.ru

**Switzerland:** WINTERSTEIGER Schweiz AG, 6331 Hünenberg,  
Chamerstrasse 44, Tel.: +41 41 780 23 22, Fax: +41 41 780 23 90,  
office@wintersteiger.ch

**USA:** WINTERSTEIGER Inc., 4705 Amelia Earhart Drive,  
Salt Lake City, UT 84116-2876, Tel.: +1 801 355-6550,  
Fax: +1 801 355-6541, mailbox@wintersteiger.com

#### Representations:

Argentina, Australia, Benelux, Bosnia Herzegovina, Bulgaria, Chile, China, Croatia, Czech Republic, Denmark, Finland, Great Britain, Hungary, Japan, Macedonia, New Zealand, Norway, Poland, Romania, Serbia, Slovakia, Slovenia, Spain, South Korea, Sweden. Contact details for our representatives are available on [www.wintersteiger.com/sports](http://www.wintersteiger.com/sports).